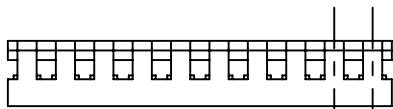
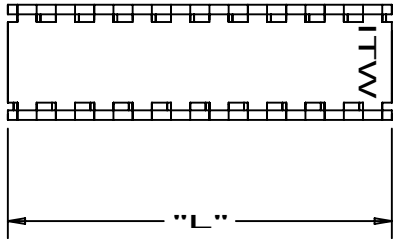


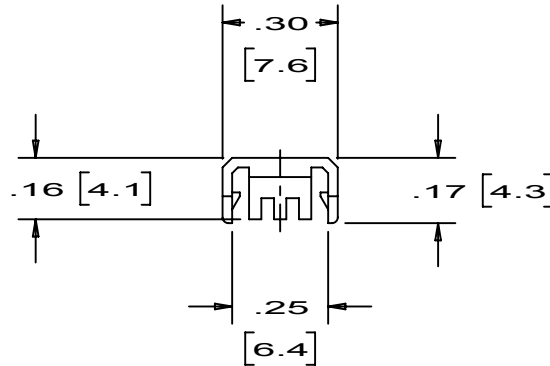
THIS COPY IS PROVIDED ON A RESTRICTED BASIS AND IS NOT TO BE USED IN ANY WAY DETRIMENTAL TO THE INTERESTS OF PANCON.

**NOTES:**

1. ALL DIMENSIONS ARE GIVEN IN INCHES & [MILLIMETERS].



.100 (TYP)  
[2.54]



					 www.pancon.de / GERMANY www.panconconnectors.com / USA			Bolingbrook, Illinois		
					<b>MAS-CON<sup>®</sup>, .100" SOCKET STRAIN RELIEF COMBINATION COVER</b>					
					UNLESS OTHERWISE SPECIFIED, DIMENSIONAL TOLERANCES ARE: (.X) ± ---- (.XXX) ± .005[.12] (.XX) ± .02[.51] ANGLES ±			UNLESS OTHERWISE SPECIFIED, ALL DIMENSIONS ARE GIVEN IN INCHES. THIRD ANGLE PROJECTION. SCALE <b>2:1</b>		
					DRAWN BY DDU		MAT'L NYLON		DRAWING NO. KA-10341	DWG.
					DATE 3/11/86				SHT 1 OF 2	A
6		KI		Added RoHS Compliant	2162					
REV	DATE	BY	CHK	DESCRIPTION	CN - R	CUST	SUP	CHK'D WHB		

