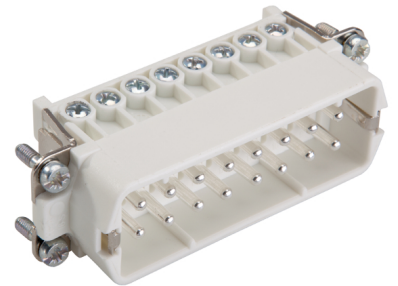


|                   |                              |  |
|-------------------|------------------------------|--|
| U.I. Lapp<br>GmbH | <b>DATASHEET</b>             |  |
|                   | <b>EPIC KIT H-A 16 BS AG</b> | 75009632<br>07.11.2014   |

H-A inserts with screw termination up to 2.5 mm<sup>2</sup> wire cross section  
 Slim connector insert for standard application  
 Easy to service screw connection  
 Universal for current and voltage transmission



Industrial machinery and plant engineering



Assembly time



Space requirement

#### Info

Slim standard insert, easy to connect by screw  
 Universal for current and voltage transmission

#### Application range

Machine and equipment manufacturing  
 Control engineering

#### Remark

Photographs are not to scale and do not represent detailed images of the respective products.

|                    |                                 |       |
|--------------------|---------------------------------|-------|
| Product Management | Document: EPIC KIT H-A 16 BS AG | 1 / 5 |
|--------------------|---------------------------------|-------|

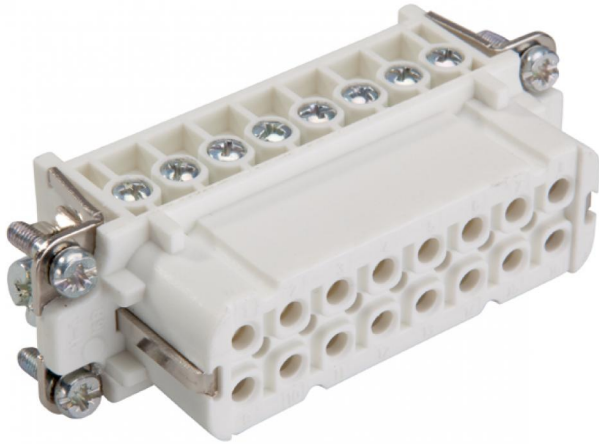
|                   |                              |  |
|-------------------|------------------------------|--|
| U.I. Lapp<br>GmbH | <b>DATASHEET</b>             |  |
|                   | <b>EPIC KIT H-A 16 BS AG</b> | <b>75009632</b><br><b>07.11.2014</b>   |

### Technical Data

|                                |   |
|--------------------------------|---|
| Article number:                | 75009632  |
| Pieces / PU:                   | 1   |
| Rated voltage (V):             | IEC: 250 V<br>UL: 600 V<br>CSA: 600 V   |
| Rated impulse voltage:         | 4 kV  |
| Rated current (A):             | IEC: 16 A<br>UL: 14 A<br>CSA: 16 A  |
| Contact resistance:            | 1.5 - 4 mohm  |
| Contacts:                      | Copper alloy, hard silver-plated  |
| Number of contacts:            | 16 + PE   |
| Termination methods:           | Screw termination: 0.5 - 2.5 mm <sup>2</sup> (2.5 mm <sup>2</sup> with conductor end sleeves depending on the crimping profile) |
| Cycle of mechanical operation: | 100   |
| Temperature range:             | -40°C to +100°C, short-term up to +125°C  |
| VDE-tested:                    | Certified production control: VDE-REG. no.: B437<br>UL-tested:<br>UL File Number: E75770  |
| Degree of soiling:             | 3   |

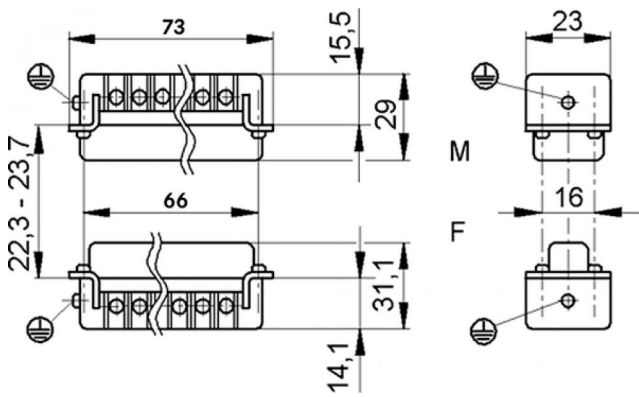
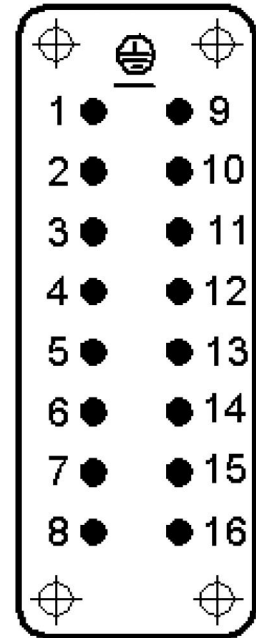
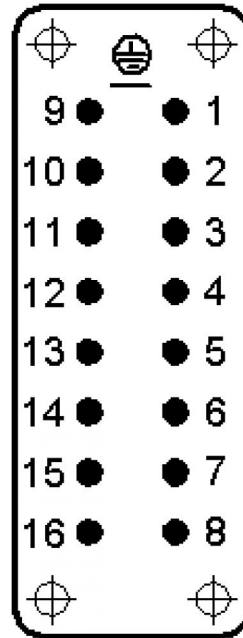
|                    |                                 |       |
|--------------------|---------------------------------|-------|
| Product Management | Document: EPIC KIT H-A 16 BS AG | 2 / 5 |
|--------------------|---------------------------------|-------|

|                   |                              |  |
|-------------------|------------------------------|--|
| U.I. Lapp<br>GmbH | <h1>DATASHEET</h1>           |  |
|                   | <b>EPIC KIT H-A 16 BS AG</b> | 75009632<br>07.11.2014   |



**M**

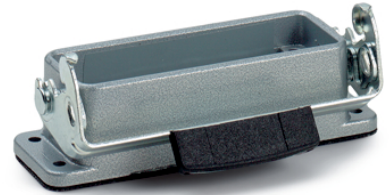
**F**



|                    |                                 |       |
|--------------------|---------------------------------|-------|
| Product Management | Document: EPIC KIT H-A 16 BS AG | 3 / 5 |
|--------------------|---------------------------------|-------|

|                |                              |  |
|----------------|------------------------------|--|
| U.I. Lapp GmbH | <h1>DATASHEET</h1>           |  |
|                | <b>EPIC KIT H-A 16 BS AG</b> | 75009632<br>07.11.2014   |

These connectors are attractive because of their compact housing.  
Small and compact, for applications with high number of contacts



Industrial machinery and plant engineering



Mechanical resistance



Robust



Waterproof

#### Info

Compact, robust metal housings size H-A 16

#### Application range

Machine and equipment manufacturing  
Control engineering  
Electronic laboratory

#### Product features

Panel-mount base  
Single lever  
Included: flat gasket

#### Remark

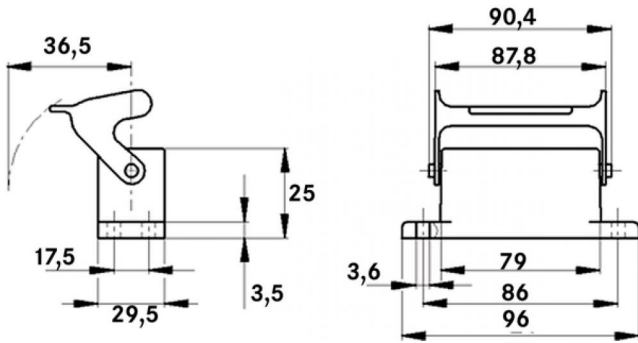
Photographs are not to scale and do not represent detailed images of the respective products.

#### Technical Data

|                    |  |
|--------------------|--|
| Article number:    | 75009632   |
| Pieces / PU:       | 1  |
| Material:          | Housing: aluminium alloy, grey<br>Lever: zinc-plated steel<br>Sealing: NBR |
| Protection rating: | IP 65 (latched)  |
| Temperature range: | -40°C to +100°C, short-term up to +125°C                                   |

|                    |                                 |       |
|--------------------|---------------------------------|-------|
| Product Management | Document: EPIC KIT H-A 16 BS AG | 4 / 5 |
|--------------------|---------------------------------|-------|

|                   |                              |  |
|-------------------|------------------------------|--|
| U.I. Lapp<br>GmbH | <h1>DATASHEET</h1>           |  <b>LAPP GROUP</b> |
|                   | <b>EPIC KIT H-A 16 BS AG</b> | 75009632<br>07.11.2014   |



|                    |                                 |       |
|--------------------|---------------------------------|-------|
| Product Management | Document: EPIC KIT H-A 16 BS AG | 5 / 5 |
|--------------------|---------------------------------|-------|