



EPIC® H-BE 48 Screw termination

The proven standard inserts for easy assembly
 Standard inserts with screw, crimp cage clamp and Push-In termination
 The EPIC® H-BE series is suitable for applications that require a reliable connection when working with high voltages and currents



 Industrial machinery and plant engineering

 Robust

 Temperature-resistant

Info

Proven screw for easy installation
 Screw, crimp, cage clamp and Push-In version - freely combinable

Application range

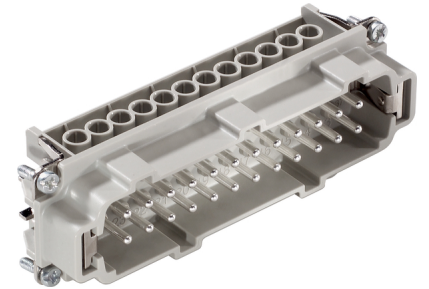
Mechanical engineering
 Light & sound technology
 Plastics industry

Technical Data

Stripping length (mm):	8
Rated voltage (V):	IEC: 500 V UL: 600 V CSA: 600 V
Rated impulse voltage:	6 kV
Rated current (A):	IEC: 16 A UL: 16 A CSA: 16 A
Contact resistance:	< 2 mOhm
Contacts:	Copper alloy, hard silver-plated
Number of contacts:	48 + PE
Termination methods:	Screw termination: 0.5 - 2.5 mm ²
Cycle of mechanical operation:	100
Temperature range:	-40°C to +100°C, short-term up to +125°C
VDE-tested:	Certified production control: VDE-REG. no.: B437 UL-tested: UL File Number: E75770
Degree of soiling:	3

Note

Photographs are not to scale and do not represent detailed images of the respective products.





EPIC® H-BE 48 Screw termination

Part number	Article description	Contact type	Wire protection	Number of operating contacts	Pieces / PU
H-BE 48 screw termination					
10204000	EPIC® H-BE 24 SS 25-48	male	yes	25 - 48	5
H-BE 24 screw termination					
10196000	EPIC® H-BE 24 SS	male	yes	1 - 24	5
10197000	EPIC® H-BE 24 BS	female	yes	1 - 24	5
10205000	EPIC® H-BE 24 BS 25-48	female	yes	25 - 48	5
10196100	EPIC® H-BE 24 SS	male		1 - 24	5
10197100	EPIC® H-BE 24 BS	female		1 - 24	5
10204100	EPIC® H-BE 24 SS 25-48	male		25 - 48	5
10205100	EPIC® H-BE 24 BS 25-48	female		25 - 48	5

EPIC® H-BE 48 Screw termination

