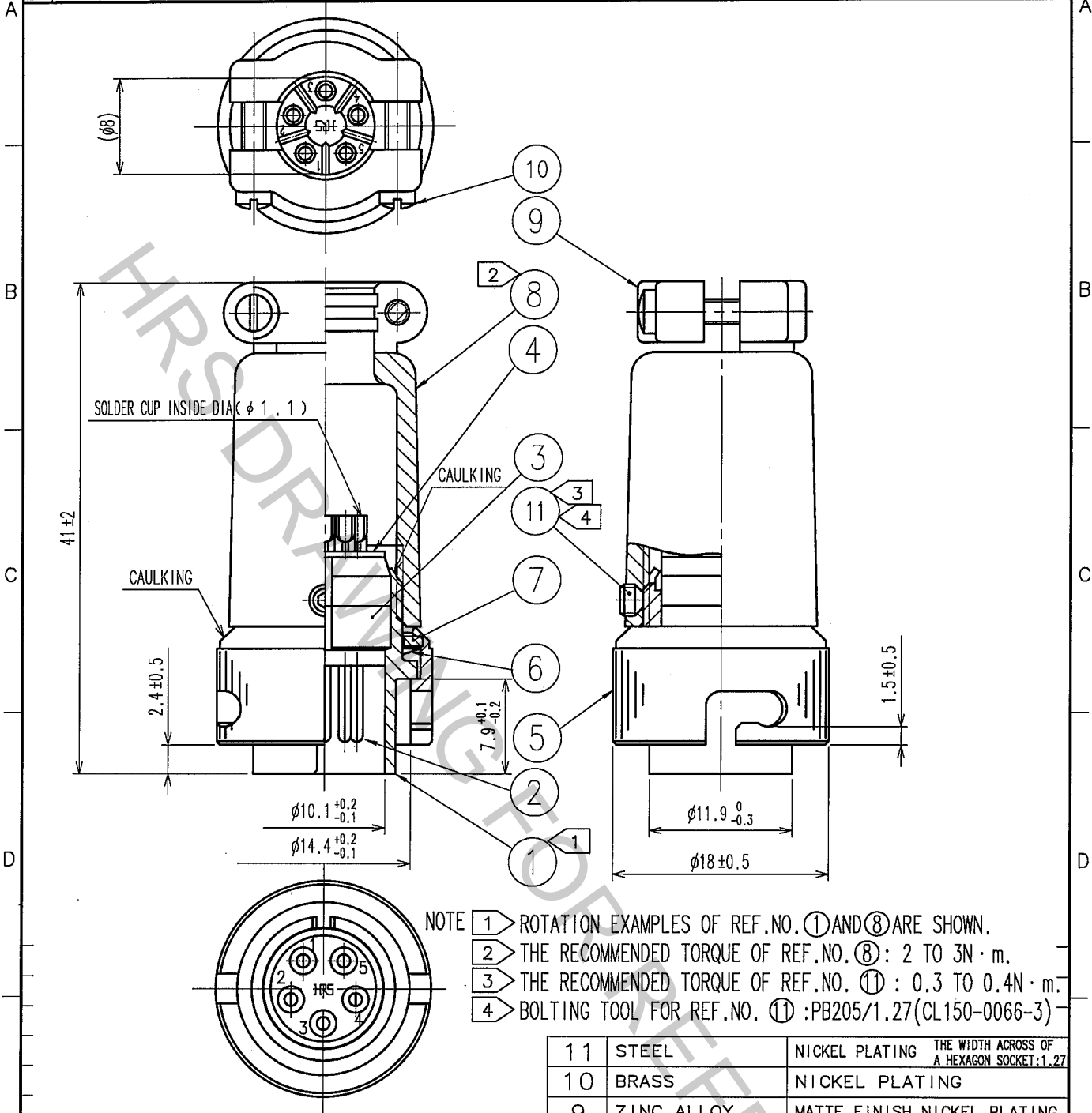


| 1 | 2 | 3 | 4 | | | | | | |
|-------|--------------------------|----|------|------|-------|--------------------------|----|------|------|
| COUNT | DESCRIPTION OF REVISIONS | BY | CHKD | DATE | COUNT | DESCRIPTION OF REVISIONS | BY | CHKD | DATE |
| △ | | | | .. | △ | | | | .. |
| △ | | | | | △ | | | | .. |
| △ | | | | | △ | | | | .. |



NOTE ① ROTATION EXAMPLES OF REF.NO.① AND ⑧ ARE SHOWN.
 ② THE RECOMMENDED TORQUE OF REF.NO.⑧ : 2 TO 3N · m.
 ③ THE RECOMMENDED TORQUE OF REF.NO.⑪ : 0.3 TO 0.4N · m.
 ④ BOLTING TOOL FOR REF.NO.⑪ : PB205/1.27(CL150-0066-3)

| | | | |
|----|------------------|-----------------------------|---|
| 11 | STEEL | NICKEL PLATING | THE WIDTH ACROSS OF A HEXAGON SOCKET:1.27 |
| 10 | BRASS | NICKEL PLATING | |
| 9 | ZINC ALLOY | MATTE FINISH NICKEL PLATING | |
| 8 | ZINC ALLOY | MATTE FINISH NICKEL PLATING | |
| 7 | BRASS | NICKEL PLATING | |
| 6 | BERYLLIUM COPPER | NICKEL PLATING | |
| 5 | BRASS | MATTE FINISH NICKEL PLATING | |

| | | |
|---|--|--|
| 4 | DIALLYL PHTHALATE (BLACK) UL94V-0 | |
| 3 | DIALLYL PHTHALATE (BLACK) UL94V-0 | |
| 2 | COPPER ALLOY SILVER PLATING 2μm min | |
| 1 | ZINC ALLOY MATTE FINISH NICKEL PLATING | |

| NO. | MATERIAL | FINISH, REMARKS | NO. | MATERIAL | FINISH, REMARKS | | |
|-------------------------------|----------|-----------------|------------------------------|------------------------------|-----------------------------|----------------------------|----------|
| CODE NO. (OLD) CL | | | DRAWN | DESIGNED | CHECKED | APPROVED | RELEASED |
| | | | <i>Y. Yamada</i> 05.08.26 | <i>G. Yamada</i> 05.08.26 | <i>H. Zemba</i> 05.08.30 | <i>U. Sato</i> 05.09.01 | |
| DRAWING NO. EDC4-112322-71 | | | PART NO. RM12BPE-5PH(71) | | | | |
| SCALE 2 : 1 | | | CODE NO. CL109-0420-1-71 | | | | |
| UNITS mm | | | 1/1 | | | | |

TO
R

