

TITLE:

SEALING PLUG, SIZE 20

DWG NO:

CA4020-59

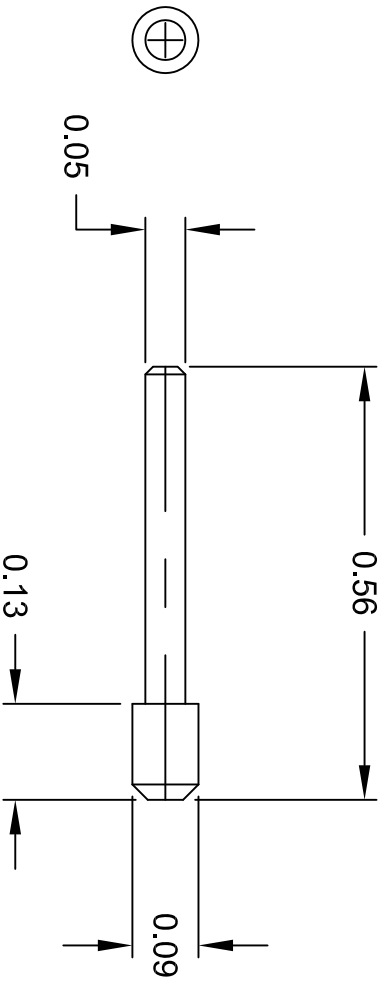
REV: A1

SH: 1

OF: 1

REVISIONS

REV	ECO	DESCRIPTION	DATE	BY	APPR
A1	-	RELEASE NEW DWG FORMAT	-	-	-



NOTES: UNLESS OTHERWISE SPECIFIED

1. MATERIAL: THERMOPLASTIC; ROHS COMPLIANT
2. COLOR: RED
3. CONTACT SIZE: 20
4. DIMENSIONS ARE IN INCHES
5. ALL DIMENSIONS ARE FOR REFERENCE USE ONLY.

QUANTITY	PART NUMBER	DESCRIPTION	ITEM
MATERIALS LIST			
UNLESS OTHERWISE SPECIFIED	SIGNATURES	DATE	
1) All dimensions are in metric(mm), 2) Tolerances are as follows: 1 PL DEC #0.30 Fractions ±1/64 2 PL DEC #0.15 Fractions ±1° 3 PL DEC #0.08	DRAWN: MRF	29JAN16	
3) Note reference =	CHECKED:		
MATERIAL SPECIFICATIONS:	ENGINEER:		
PROCESS SPECIFICATIONS:	APPROVAL:		
NEXT ASSY:	CUSTOMER:		
THIS DRAWING IS SUPPLIED FOR INFORMATION ONLY. DESIGN FEATURES, SPECIFICATIONS AND PERFORMANCE DATA SHOWN HEREON ARE THE PROPERTY OF THE AMPHENOL CORPORATION. NO RIGHTS OF REPRODUCTION ARE IMPLIED. ALL DIMENSIONS ARE SUBJECT TO NORMAL MANUFACTURING VARIATIONS.			
SCALE: NONE	TYPE: A C-	DWG NO: CA-4020-59	REVISION: A1
		SEALING PLUG, SIZE 20	
		Shine Systems - www.amphenol-shine.com 44724 Morley Drive Clinton Township, MI 48036	
			SHEET 1 OF 1