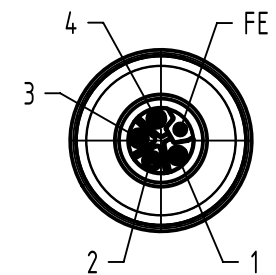
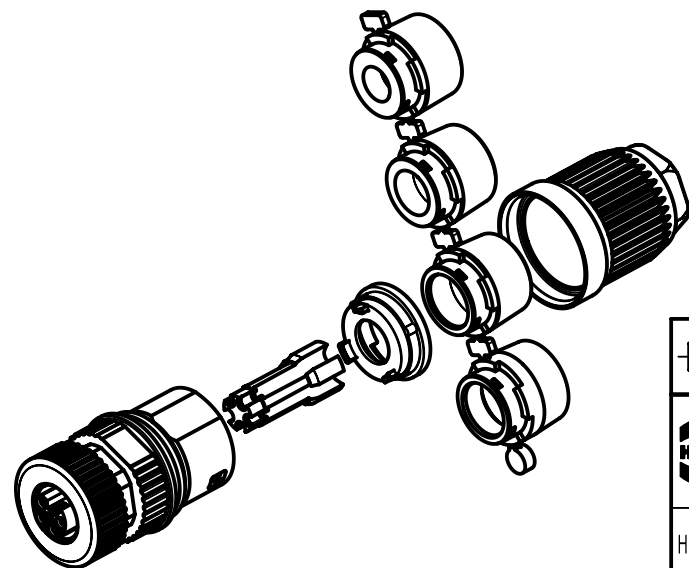


contact face acc. to
IEC 61076-2-111



order contacts separately

CableØ	wire cros section [mm²]	part no.	
		4xFemale contact (PE)	4xMale contact
5.8 - 13.5mm	0.5	21011009931	21011009927
	0.75	21011009932	21011009928
	1.5	21011009933	21011009929
	2.5	21011009934	21011009930



	All Dimensions in mm Original Size DIN A4	Scale 1:1	Free size tol.			Ref.
	All rights reserved Department EC PD - RO	Created by STOICA	Inspected by AVRAM	Standardisation HOFFMANN	Date 2016-03-22	State Final Release
HARTING Electronics GmbH D-32339 Espelkamp		Title M12 Power Female Crimp L-coded				Doc-Key / ECM-Nr. 100605596/UGD/001/C 500000102160
		Type TB	Number 21038962505			Rev. C Page 1/1