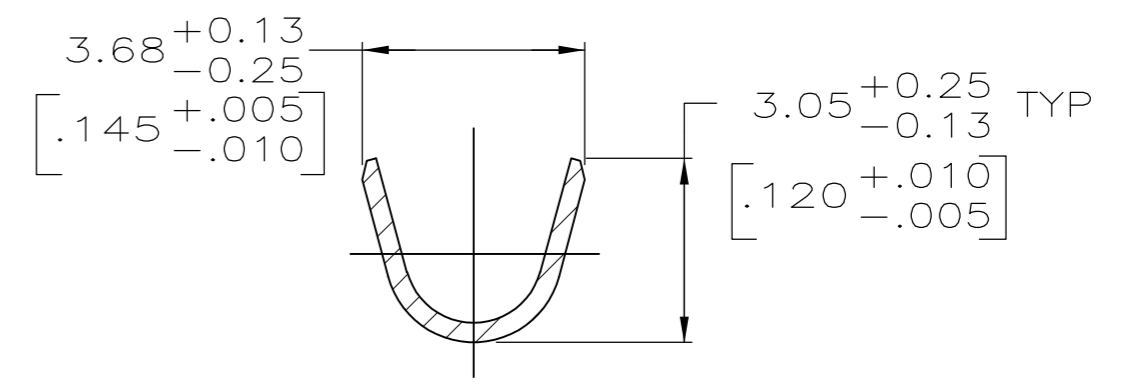
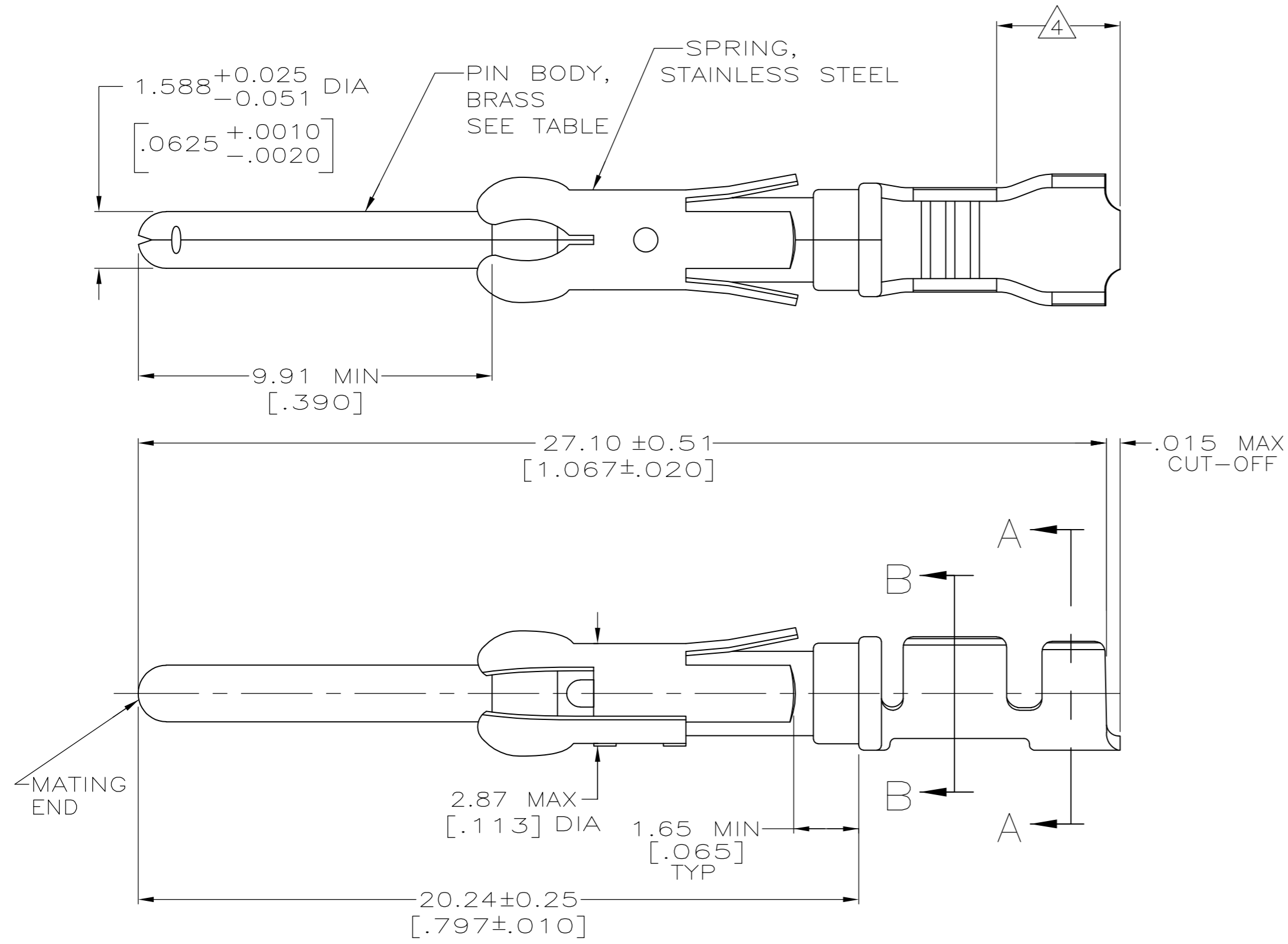
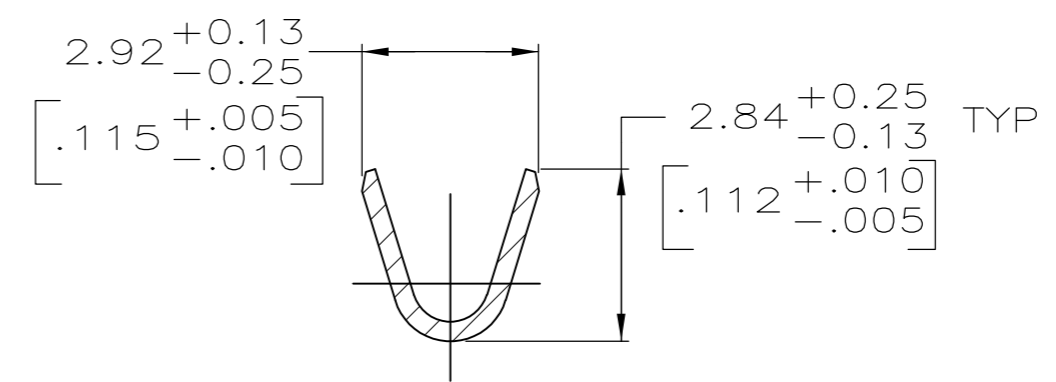


THIS DRAWING IS UNPUBLISHED. RELEASED FOR PUBLICATION  
 © COPYRIGHT - - ALL RIGHTS RESERVED.

LOC		DIST		REVISIONS			
P	LTR	DESCRIPTION		DATE	DWN	APVD	
FT	47	E2	REVISED PER ECO-11-010839	26MAY11	RK	HMR	



SECTION A-A



SECTION B-B

- ① 0.76 μm [.000030] MIN PRECIOUS METAL PLATE ON MATING END FOR A LENGTH OF 5.08 [.200] MIN OVER 1.27 μm [.000050] MIN NICKEL PLATE. GOLD FLASH ALL OVER. CONFORMS TO THE REQUIREMENTS OF TE CONNECTIVITY PRODUCT SPEC 108-10042, BASED ON EIA/ECA-364-1000.01A ( CONTROLLED ENVIRONMENT APPLICATIONS ).
- ② 0.76 μm [.000030] MIN PRECIOUS METAL PLATE ON MATING END FOR A LENGTH OF 5.08 [.200] MIN WITH A UNIFORM GRADIENT TO 0.25 μm [.000010] ON REMAINDER, OVER 1.27 μm [.000050] MIN NICKEL PLATE. GOLD FLASH ALL OVER. CONFORMS TO THE REQUIREMENTS OF TE CONNECTIVITY PRODUCT SPEC 108-10042, BASED ON EIA/ECA-364-1000.01A ( CONTROLLED ENVIRONMENT APPLICATIONS ).
- ③ 0.38 μm [.000015] MIN GOLD PER MIL-G-45204 ON MATING END FOR A LENGTH OF 5.08 [.200] MIN WITH GOLD FLASH ON THE REMAINDER OVER 1.27 μm [.000050] MIN NICKEL PER QQ-N-290.
- ④ GOLD PLATING NOT REQUIRED IN THIS AREA.
- ⑤ 1.27 μm [.000050] MIN TIN-LEAD PER MIL-T-10727 OVER 1.27 μm [.000050] MIN NICKEL PER QQ-N-290.
- 6. WIRE RANGE 18-16 AWG.
- 7. INSULATION RANGE 2.03 [.080]-2.54 [.100] DIA.
- ⑧ 0.38 μm [.000015] MIN GOLD PER MIL-G-45204 ON MATING END FOR A LENGTH OF 5.08 [.200] MIN, 1.27 μm [.000050] MIN TIN-LEAD PER MIL-T-10727 ON OPPOSITE END FOR A LENGTH OF 5.69 [.224] MIN, BOTH OVER 1.27 μm [.000050] MIN NICKEL PER QQ-N-290.
- ⑨ 1.27 μm [.000050] MIN TIN PER MIL-T-10727 OVER 1.27 μm [.000050] MIN NICKEL PER QQ-N-290.

SMALL PACK	⑨	1-66098-8	1-66099-6
STANDARD	⑨	1-66098-8	1-66099-5
SMALL PACK	①	66098-4	1-66099-4
SMALL PACK	③	66098-3	1-66099-3
SMALL PACK	⑤	66098-2	1-66099-2
SMALL PACK	②	66098-1	1-66099-1
<b>OBSOLETE</b> STANDARD	⑧	1-66098-6	1-66099-0
STANDARD	①	66098-4	66099-4
STANDARD	③	66098-3	66099-3
STANDARD	⑤	66098-2	66099-2
STANDARD	②	66098-1	66099-1
PACKAGING TYPE	CONTACT FINISH	STRIP P/N REF	PART NO

THIS DRAWING IS A CONTROLLED DOCUMENT.

DWN	05/29/92	 TE Connectivity
CHK	6-11-92	
APVD	7-7-92	
PRODUCT SPEC		
DIMENSIONS: MM [ INCHES ]	TOLERANCES UNLESS OTHERWISE SPECIFIED:	NAME
0 PLC ± -	1 PLC ± -	W.LENKER
2 PLC ± 0.13 [.005]	3 PLC ± -	G.STEINHAUER
4 PLC ± -	ANGLES ± -	PRODUCT SPEC
MATERIAL	FINISH	APPLICATION SPEC
SEE CALLOUTS	SEE CALLOUTS	
WEIGHT		SIZE
		A2
CUSTOMER DRAWING	SCALE	CAGE CODE
	8:1	00779
	SHEET	DRAWING NO
	1 of 1	C=66099
	REV	RESTRICTED TO
	E2	-