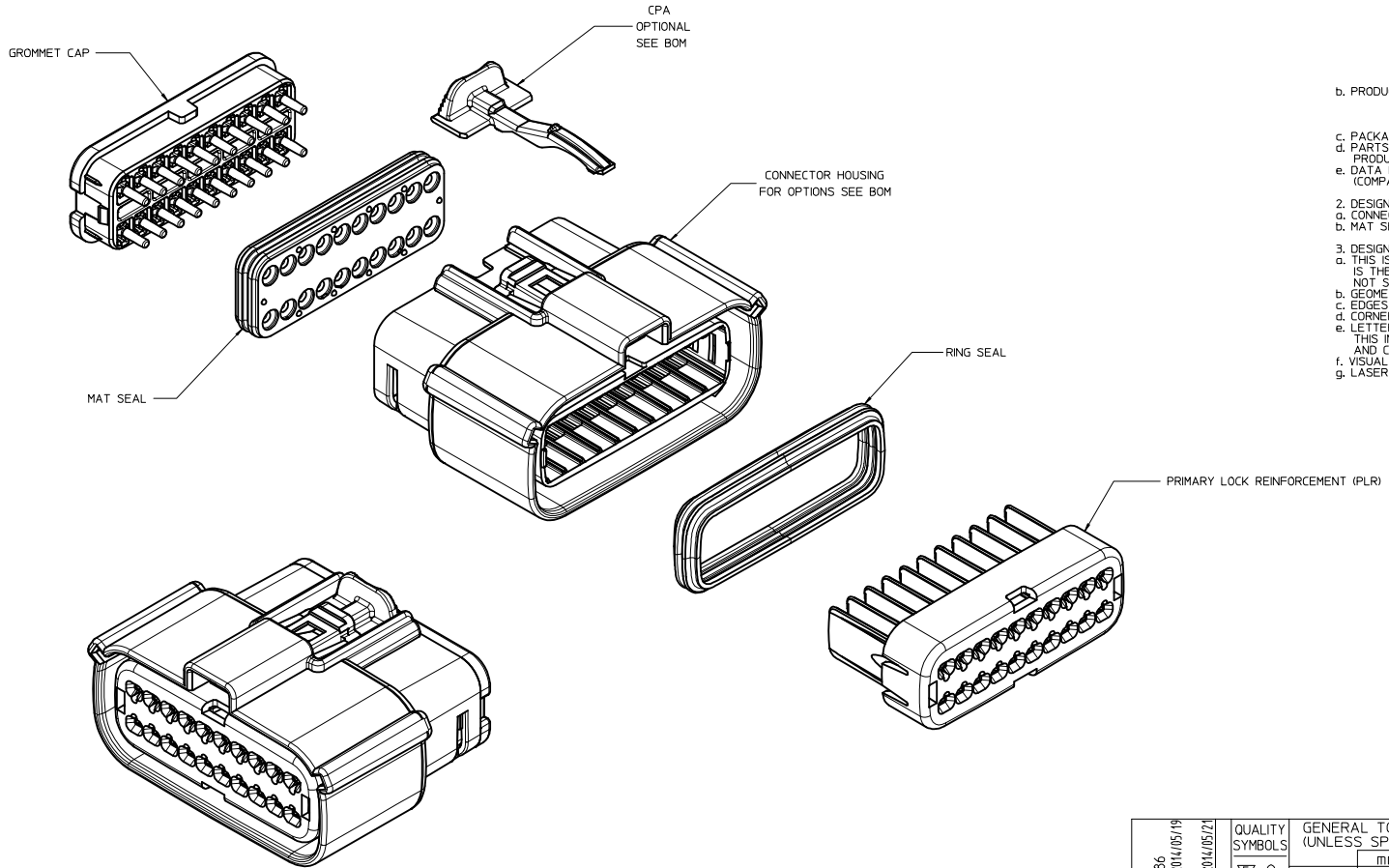


TABLE OF CONTENTS	
SHEET NO.	SHEET DESCRIPTION
1	NOTES
2	KEY CONFIGURATIONS
3	RECEPTACLE SEALED ASSEMBLY
4-5	BOM
6-7	MATING INTERFACE SHEET



NOTES: VALID UNLESS OTHERWISE SPECIFIED

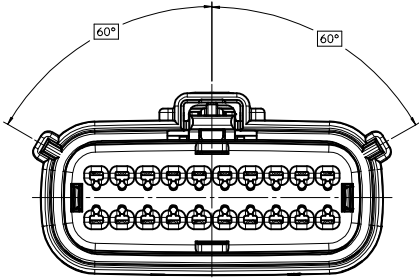
1. GENERAL:
- a. APPLICATION SPECIFICATION SEE: AS-33472-100
 - CONTAINS: PRODUCT INTRODUCTION, PRODUCT SUMMARY, CONNECTOR ASSEMBLY, PACKAGING INFORMATION, CONNECTOR MATING, SERVICE INSTRUCTIONS, ELECTRICAL CONTINUITY CHECKING, CRIMPING, AND TROUBLESHOOTING.
 - DESIGNED TO MATE WITH DEVICE CONNECTION AS SPECIFIED ON SHEET 6 AND 7 OF DRAWING SD-33472-201
 - DESIGNED TO MATE WITH BLADE SEALED ASSEMBLY AS SPECIFIED IN DRAWING SD-33482-0001
 - FOR 15mm RECEPTACLE TERMINALS TO BE USED WITH THIS ASSEMBLY. SEE MOLEX DRAWING SD-33012-002.
 - SYSTEM TO BE USED WITH WIRE WITHIN DIAMETER RANGE OF 1.4 mm TO 2.69 mm.
 - ASSEMBLY SHIPPED WITH PLR AND CPA IN PRE-LOCK POSITION (SEE SECTION Z-Z PRE-LOCK).
 - IN THE EVENT THAT THE PLR IS FOUND IN THE SEATED (FINAL LOCK) POSITION, REFER TO MOLEX SPECIFICATION PS-34646-001, AVAILABLE AT www.molex.com <<http://www.molex.com>>.
 - ASSEMBLY CONFORMS TO SAE/USCAR-2 REV.4 WITH THE FOLLOWING EXCEPTIONS: ENGAGEMENT FORCE TO MOVE CPA FROM PRE-LOCK TO FINAL LOCK POSITION WHEN UNMATED: 40N MIN. DISENGAGEMENT FORCE TO MOVE CPA FROM FINAL LOCK TO PRE-LOCK POSITION: 3N MIN. 40N MAX. TERMINAL INSERTION FORCE FOR WIRE DIAMETER ABOVE 2.5mm NOT EXCEEDING 2.69mm SHALL NOT EXCEED 40 NEWTONS.
 - b. PRODUCT SPECIFICATION SEE: PS-33472-000
 - CONTAINS: PRODUCT INTRODUCTION, PRODUCT SUMMARY, RATINGS (CURRENT, TEMPERATURE, SEALING, AND FLAMMABILITY), AND PRODUCT VALIDATION.
 - c. PACKAGING SPECIFICATION PER MOLEX DRAWING: PK-31900-903
 - d. PARTS MUST BE IN COMPLIANCE TO MOLEX CHEMICAL SUBSTANCES FOR PRODUCTS AND PACKAGING SPECIFICATION: ES-40000-5016
 - e. DATA MUST BE SUBMITTED UNDER THE MOLEX PART NUMBER TO IMDS (COMPANY ID#13255)
2. DESIGN - MATERIALS:
- a. CONNECTOR HOUSING, GROMMET CAP, PLR: SPS/NYLON 20% GLASS FILLED
 - b. MAT SEAL: INTERNALLY LUBRICATED SILICONE
3. DESIGN - GEOMETRY:
- a. THIS IS A 100% CAD GENERATED PART. THE CAD MATHEMATICAL DATA IS THE MASTER FOR THIS PART. FOR DIMENSIONAL OR ANY INFORMATION NOT SHOWN ON THIS DRAWING, ANALYZE THE CAD MODEL.
 - b. GEOMETRIC DIMENSIONS AND TOLERANCES PER ASME Y14.5M - 1994
 - c. EDGES AND UNDIMENSIONED DETAILS PER ISO13715
 - d. CORNERS SHOWN AS SHARP TO BE R 0.2 MAX.
 - e. LETTERING SHALL BE 0.15 MAX RAISED IN 0.25 MAX RECESS PAD. THIS INCLUDES RECYCLING CODE, CAVITY ID, VENDOR IDENTIFICATION, AND CUSTOMER MATERIAL NUMBER.
 - f. VISUAL DEFECTS SHALL MEET COSMETIC STANDARD PS-45499-002 (Class B)
 - g. LASER MARKING: TBD

REV	DESCRIPTION
Y6	ADD NEW P/N 33472-2134 33472-2135 33472-2136 33472-2137 33472-2138
Y5	CHANGE NOTE 1a REF. TO DWG SD-33482-0001
Y4	ADD NEW P/N 33472-2133
Y3	CHANGE THE STATUS TO SALEABLE FROM TOOLED BUT NOT VALIDATED FOR DK GREY AND ST GREY
Y2	ADD NEW P/N 33472-2131 33472-2132
Y1	ADD NEW P/N 33472-2130
Y	ADD NEW P/N 33472-2126 33472-2127 33472-2128 33472-2129
X11	ADD NEW P/N 33472-2123 33472-2124 33472-2125
X10	MOVE SECTION S-S FROM 8.5mm TO 3.5mm FOR INTERFACE SEALING AREA CONTROL ON SHEET 7
X9	ADD NEW P/N 33472-2122
X8	ADD NEW P/N 33472-2115 33472-2116 33472-2117 33472-2118 33472-2119 33472-2120 33472-2121
X7	ADD NEW P/N 33472-2106 33472-2107 33472-2108 33472-2109 33472-2110 33472-2111 33472-2112 33472-2113 33472-2114

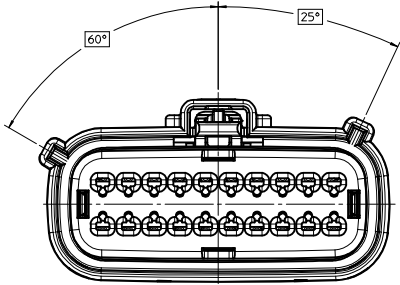
INSPECTION NUMBER LOG
 LAST NUMBER USED: 5
 ADDED:
 REMOVED:

REVISED EEC NO: UAU2014-1786 DRAWN BY: CHYK DATE: 2014/05/19 APPR: IKOSHY DATE: 2014/05/21 REV: Y6	QUALITY SYMBOLS	GENERAL TOLERANCES (UNLESS SPECIFIED)	DIMENSION STYLE	SCALE	DESIGN UNITS	THIRD ANGLE PROJECTION	TITLE
	▽=0	mm INCH	MM ONLY	3:1	METRIC		MX150 2X10 RECEPTACLE SEALED ASSEMBLY MAT SEAL
	▽=0	4 PLACES ± --- ± ---	DGRAFFI THS 06/17/2003				
	▽=0	3 PLACES ± 0.10 ± ---	DGRAFFI THS 06/17/2003			MATERIAL NO. SEE BOM DOCUMENT NO. SD-33472-201 SHEET NO. 1 OF 7	
▽=0	2 PLACES ± 0.3 ± ---	DGRAFFI THS 06/17/2003				THIS DRAWING CONTAINS INFORMATION THAT IS PROPRIETARY TO MOLEX INCORPORATED AND SHOULD NOT BE USED WITHOUT WRITTEN PERMISSION	

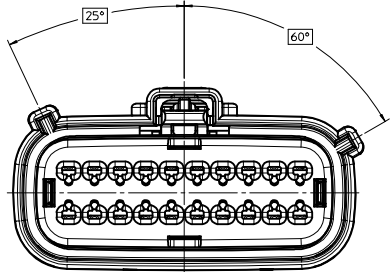
KEY CONFIGURATIONS



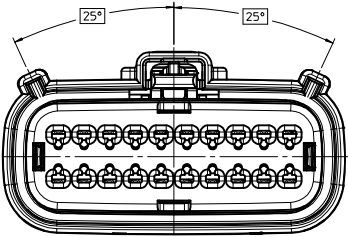
KEY A



KEY B



KEY C

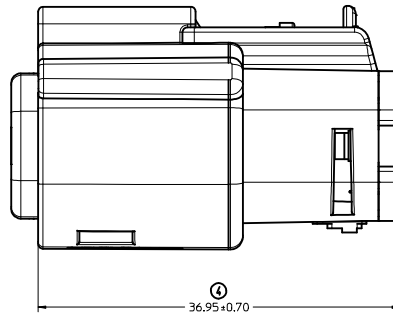
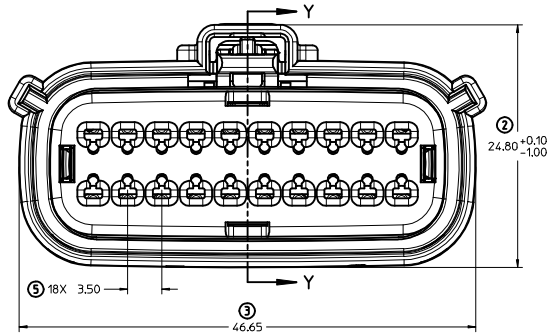
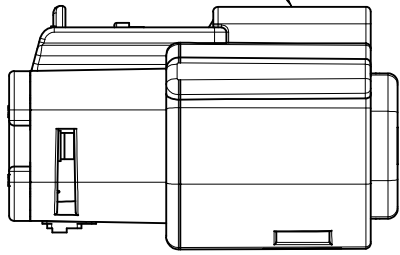


KEY D

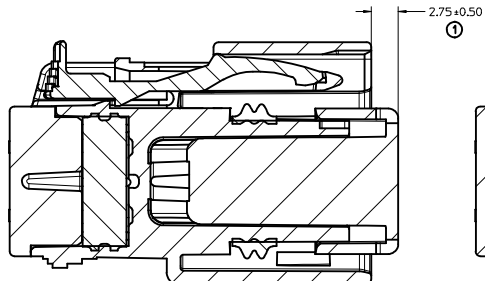
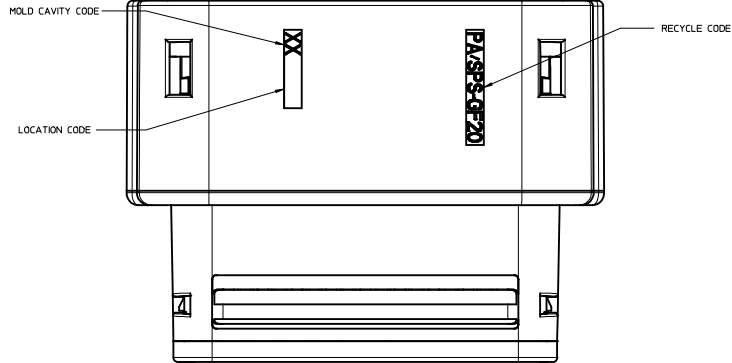
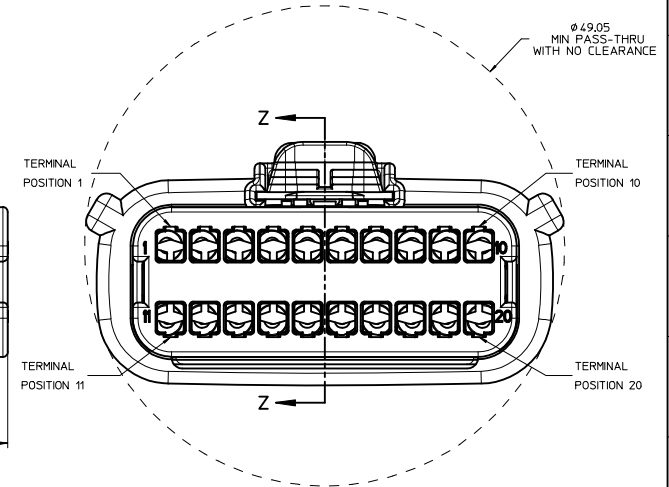
REVISED DEC NO. UAU2014-1786 DRAWN BY CHYK Y6 APPR: WOSHY 2014/05/19 2014/05/21	QUALITY SYMBOLS	GENERAL TOLERANCES (UNLESS SPECIFIED)	DIMENSION STYLE	SCALE	DESIGN UNITS	THIRD ANGLE PROJECTION
	▽=0	4 PLACES ± mm ± INCH	MM ONLY	3:1	METRIC	☑
	▽=0	3 PLACES ± 0.10 ± 0.004				
	▽=0	2 PLACES ± 0.3 ± 0.012				
		ANGULAR ± 3 °	DRAWN BY DATE	TITLE		
		DRAFT WHERE APPLICABLE MUST REMAIN WITHIN DIMENSIONS	DGRIFITHS 06/17/2003	MX150 2X10 RECEPTACLE SEALED ASSEMBLY MAT SEAL		
			CHECKED BY DATE	molex		
			DGRIFITHS 06/17/2003	DOCUMENT NO.		
			APPROVED BY DATE	SD-33472-201		
			DGRIFITHS 06/17/2003	SHEET NO.		
			MATERIAL NO.	2 OF 7		
			SEE BOM	THIS DRAWING CONTAINS INFORMATION THAT IS PROPRIETARY TO MOLEX INCORPORATED AND SHOULD NOT BE USED WITHOUT WRITTEN PERMISSION		

20 19 18 17 16 15 14 13 12 11 10 9 8 7 6 5 4 3 2 1

LASER MARKING ON THIS SURFACE
SEE NOTE 3g.

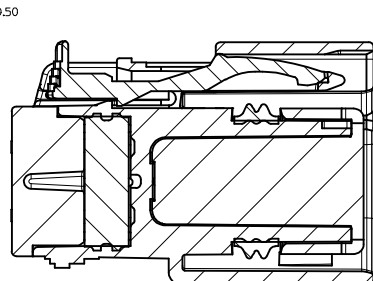


RECEPTACLE SEALED ASSEMBLY



PRIMARY LOCK REINFORCEMENT (PLR) SHOWN
IN PRE-STAGED POSITION

SECTION Z-Z



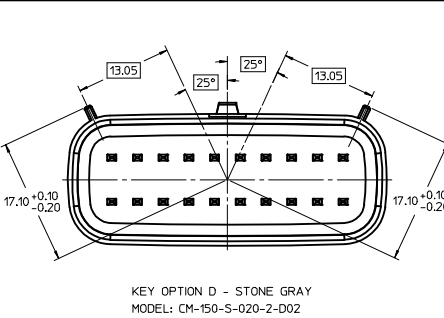
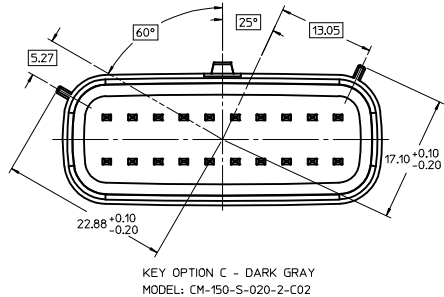
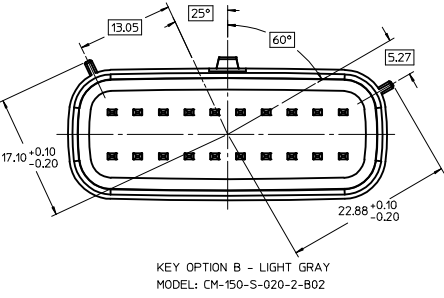
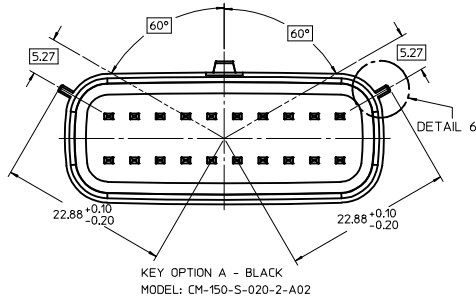
PRIMARY LOCK REINFORCEMENT (PLR) SHOWN
IN FINAL-LOCK POSITION

SECTION Y-Y

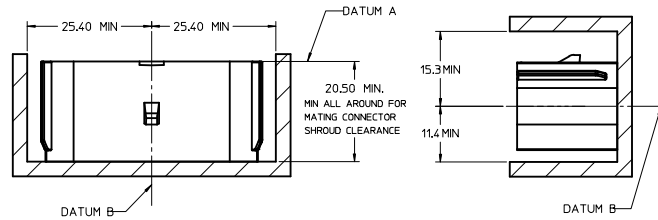
REVISED DEC NO. JAU2014-1786 DRAWN BY Y6 CHKD: APPR: WOSHY 2014/05/19 2014/05/21	QUALITY SYMBOLS	GENERAL TOLERANCES (UNLESS SPECIFIED)	DIMENSION STYLE	SCALE	DESIGN UNITS	THIRD ANGLE PROJECTION
	∇=0 4 PLACES ± --- ± --- ∇=0 3 PLACES ± --- ± --- ∇=0 2 PLACES ± 0.10 ± --- ∇=0 1 PLACE ± 0.3 ± --- ∇=0 0 PLACE ± ±	mm INCH ± --- ± --- ± 0.10 ± --- ± 0.3 ± --- ± ±	MM ONLY	4:1	METRIC	DRAWN BY DATE DGRIFFI THS 06/17/2003 CHECKED BY DATE DGRIFFI THS 06/17/2003 APPROVED BY DATE DGRIFFI THS 06/17/2003
	ANGULAR ± 3 ° DRAFT WHERE APPLICABLE MUST REMAIN WITHIN DIMENSIONS	MATERIAL NO. SEE BOM	TITLE MX150 2X10 RECEPTACLE SEALED ASSEMBLY MAT SEAL molex	DOCUMENT NO. SD-33472-201	SHEET NO. 3 OF 7	
	THIS DRAWING CONTAINS INFORMATION THAT IS PROPRIETARY TO MOLEX INCORPORATED AND SHOULD NOT BE USED WITHOUT WRITTEN PERMISSION					

19 18 17 16 15 14 13 12 11 10 9 8 7 6 5 4 3 2 1

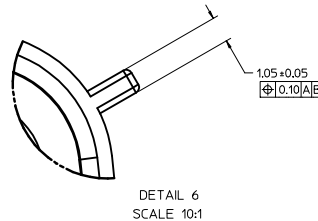
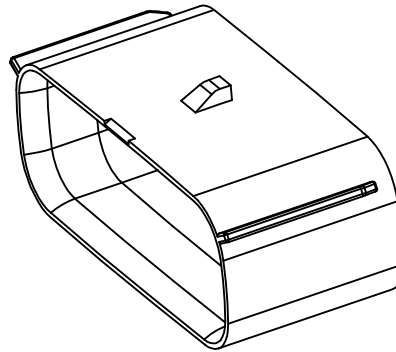
KEYING OPTIONS TABLE



IF HEADER IS RECESSED INTO A POCKET, THESE DIMENSIONS REPRESENT THE MINIMUM CLEARANCE REQUIRED FOR THE MATING CONNECTOR SHROUD.



PACKAGING FRAME



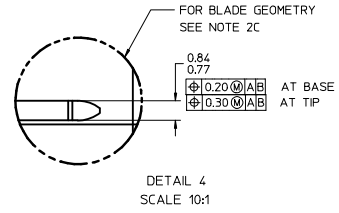
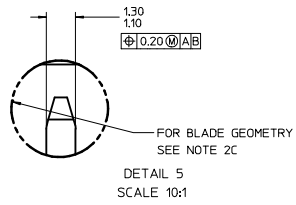
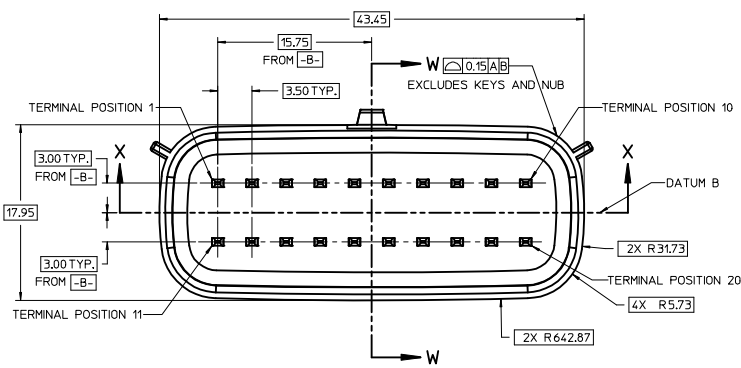
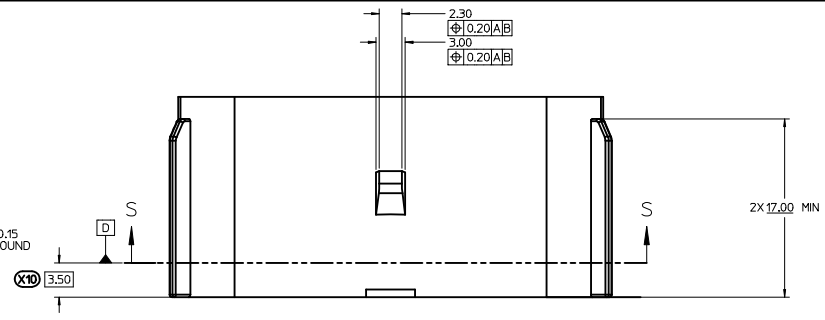
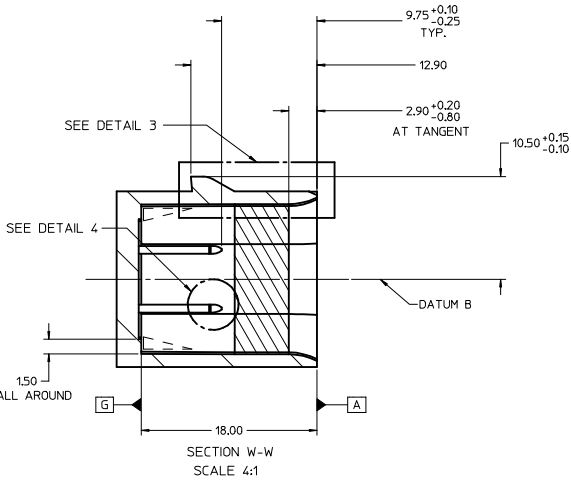
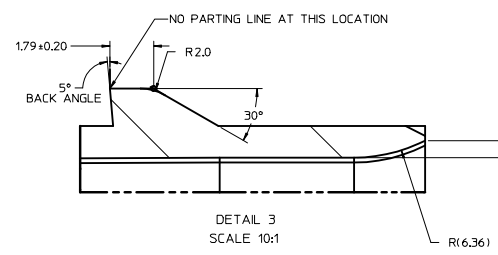
MATING INTERFACE SHEET 1/2

MATING INTERFACE NOTES: VALID UNLESS OTHERWISE SPECIFIED

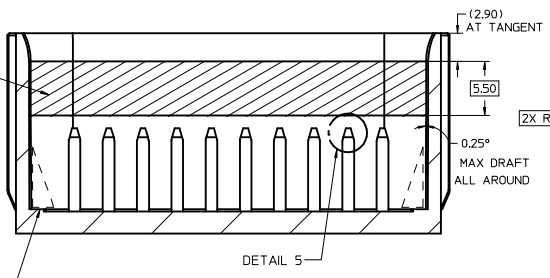
1. GENERAL:
 - a. DESIGNED TO MATE WITH MOLEX CONNECTOR 33472-20XX
A FULL SHROUD ON THE MATING CONNECTOR IS REQUIRED TO INSURE THAT THE CONNECTOR-HEADER POLARIZATION FEATURES (OPTIONS A THRU D) WILL FUNCTION. THE FULL SHROUD ALSO PREVENTS SCOOP DAMAGE TO THE HEADER PINS. REFER TO SAE/JEDEC-12 CONNECTOR DESIGN GUIDE LINES FOR ADDITIONAL INFORMATION
 - b. PARTS MUST BE IN COMPLIANCE TO MOLEX CHEMICAL SUBSTANCES FOR PRODUCTS AND PACKAGING SPECIFICATION: ES-40000-5016
 - c. FLAMMABILITY REQUIREMENT: PER ISO3795 OR GM3191
 1. BURN RATE: 100MM/MIN MAXIMUM
 2. MATERIAL MUST BE SELF EXTINGUISHING
2. MATERIALS:
 - a. MATERIAL: SPS/NYLON GF20, REGRIND 20% MAX BY WEIGHT
 - b. STANDARD COLORS FOR POLARIZATION (SEE KEYING OPTIONS TABLE). DEVIATION REQUIRES APPROVAL OF AUTHORIZED PERSON
 - c. FOR BLADE BASE MATERIAL, PLATING AND PROCESS LUBRICANT:
 1. TIN - BASE MATERIAL: COPPER ALLOY, CONDUCTIVITY >=60% IACS AT 20°C; TENSILE STRENGTH >= 410 N/mm²
- BARRIER MATERIAL: NICKEL DEPOSIT FROM NICKEL SULFAMATE PLATING SOLUTION W/O ANY ADDITIVES
THICKNESS: 2.5 - 4.0 MICROMETERS
 2. SILVER - BARRIER MATERIAL: ELECTRO-DEPOSITED DUCTILE SULPHAMATE NICKEL
THICKNESS: 1.25 - 2.25 MICROMETERS
 3. TOP LAYER: 100% ELECTRO-DEPOSITED TIN, MATTE FINISH
THICKNESS: 2.5 - 4.0 MICROMETERS
 4. ANY PROCESS LUBRICANT REMAINING ON THE TERMINAL MUST NOT VARNISH OR DEGRADE ITS ELECTRICAL PERFORMANCE UP TO A MAXIMUM CLASS AMBIENT TEMPERATURE PER SAE USCAR-2 FOR 1000 HOURS. PROCESS LUBRICANTS SHOULD BE APPROVED BY THE RESPONSIBLE ENGINEER.
 5. INFORMATION FOR BLADE DESIGN WAS DEVELOPED FROM EWCAP DWG: EWCAP-001

3. GEOMETRY:
 - a. THIS IS A 100% CAD GENERATED PART. THE CAD MATHEMATICAL DATA IS THE MASTER FOR THIS PART. FOR DIMENSIONAL OR ANY INFORMATION NOT SHOWN ON THIS DRAWING, ANALYZE THE CAD MODEL.
 - b. GEOMETRIC DIMENSIONS AND TOLERANCES PER ASME Y14.5M - 1994
 - c. GENERAL TOLERANCES: SEE TITLE BLOCK
 - d. EDGES AND UNDIMENSIONED DETAILS PER ISO13715
4. MANUFACTURING:
 - a. DRAFT TO BE WITHIN TOLERANCE.
PLUS DRAFT - INDICATES A DIMENSION REPRESENTS THE SMALLEST SIZE OF A FEATURE. DRAFT WILL ADD MATERIAL.
MINUS DRAFT - INDICATES A DIMENSION REPRESENTS THE LARGEST SIZE OF A FEATURE. DRAFT WILL REMOVE MATERIAL.
 - b. ALLOWABLE FLASH MAX 0.20 HIGH BY MAX 0.19 THICK.
 - c. ALLOWABLE SPLIT/PARTING LINE MISMATCH 0.2 MAX.
 - d. VISUAL DEFECTS SHALL MEET COSMETIC STANDARD PS-45499-002 (Class B)
 - e. NO EXTERNAL MOLD RELEASE AGENT ALLOWED DURING MANUFACTURING
 - f. NO PARTING LINES, NO DRAFT, MISMATCHES OR EJECTOR MARKS PERMISSIBLE WITHIN SEALING SURFACE. SEALING SURFACE TOOLING TO BE PROCESSED TO A SURFACE FINISH OF NTMA #70 (400 PAPER) MINIMUM

REVISED DEC NO: 04/2014-1786 DRAWN BY: 2014/05/19 CHKD: APPR: IKOSHY 2014/05/21 Y0	QUALITY SYMBOLS	GENERAL TOLERANCES (UNLESS SPECIFIED)	DIMENSION STYLE	SCALE	DESIGN UNITS	THIRD ANGLE PROJECTION
	▽=0	mm INCH	MM ONLY	2:1	METRIC	☉
	▽=0	4 PLACES ± --- ± ---	DRAWN BY DATE	TITLE		
	▽=0	3 PLACES ± 0.10 ± ---	CHECKED BY DATE	MX150 2X10 RECEPTACLE SEALED ASSEMBLY MAT SEAL		
	1 PLACE ± 0.3 ± ---	APPROVED BY DATE	molex			
	0 PLACE ± ± ---	DGR1FF1THS 06/17/2003	SD-33472-201			SHEET NO. 6 OF 7
	ANGULAR ± 3 °	DGR1FF1THS 06/17/2003	DOCUMENT NO.			
	DRAFT WHERE APPLICABLE MUST REMAIN WITHIN DIMENSIONS		SEE BOM			
			THIS DRAWING CONTAINS INFORMATION THAT IS PROPRIETARY TO MOLEX INCORPORATED AND SHOULD NOT BE USED WITHOUT WRITTEN PERMISSION			

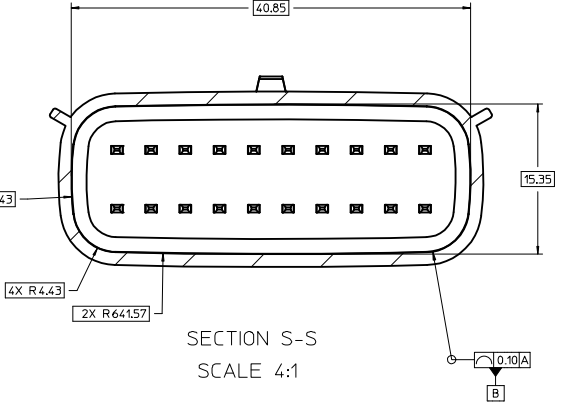


SURFACE MUST BE FREE OF SURFACE DEFECTS AND PARTING LINES FOR SEALING ALL AROUND AND NO DRAFT



CONSTRUCTION BELOW THIS SURFACE IS NOT CONTROLLED. NO PLASTIC FEATURES MAY EXTEND ABOVE THIS SURFACE.

SECTION X-X
SCALE 4:1



REVISED ELEC NO: UAU2014-1786 DRAWN BY: CHYK CHECKED BY: Y6 APPR: WOSHY DATE: 2014/05/19 DATE: 2014/05/21	QUALITY SYMBOLS	GENERAL TOLERANCES (UNLESS SPECIFIED)	DIMENSION STYLE	SCALE	DESIGN UNITS	THIRD ANGLE PROJECTION
	∇=0 ∇=0 ∇=0	mm INCH 4 PLACES ± --- ± --- 3 PLACES ± --- ± --- 2 PLACES ± 0.10 ± --- 1 PLACE ± 0.3 ± --- 0 PLACE ± ±	MM ONLY	2:1	METRIC	M 30°
	ANGULAR ± 3 °	DRAFT WHERE APPLICABLE MUST REMAIN WITHIN DIMENSIONS	MATERIAL NO. SEE BOM			
			DRAWN BY: DGRIF1THS DATE: 06/17/2003			
			CHECKED BY: DGRIF1THS DATE: 06/17/2003			
			APPROVED BY: DGRIF1THS DATE: 06/17/2003			
			MATERIAL NO. SD-33472-201			
			DOCUMENT NO. SD-33472-201			
			TITLE: MX150 2X10 RECEPTACLE SEALED ASSEMBLY MAT SEAL			
			SHEET NO. 7 OF 7			

TABLE OF CONTENTS

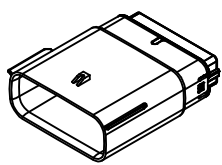
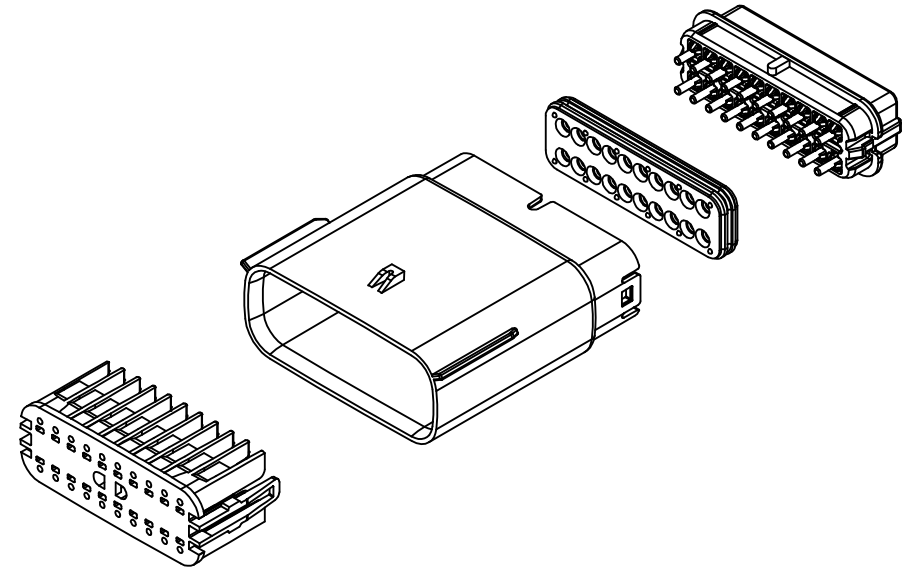
SHEET NO.	SHEET DESCRIPTION
1	NOTES AND BOM
2	CONFIGURATIONS
3-4	KEY CONFIGURATIONS
5	BLADE SEALED ASSEMBLY
6	SYSTEM PACKAGING

NOTES: VALID UNLESS OTHERWISE SPECIFIED

1. GENERAL:
- a. APPLICATION SPECIFICATION SEE: AS-33472-100
 -CONTAINS: PRODUCT INTRODUCTION, PRODUCT SUMMARY, CONNECTOR ASSEMBLY, PACKAGING INFORMATION, CONNECTOR MATING, SERVICE INSTRUCTIONS, ELECTRICAL CONTINUITY CHECKING, CRIMPING, AND TROUBLESHOOTING.
 -DESIGNED TO MATE WITH RECEPTACLE SEALED ASSEMBLY AS SPECIFIED IN THE MATING CONNECTOR DRAWINGS CHART.
 +DENOTES DRAWINGS THAT CAN BE ACCESSED AT <http://ewcap.uscarteams.org/>.
 -ASSEMBLY SHIPPED WITH PLR IN PRE-LOCK POSITION (SEE PLR PRE-LOCK VIEW SHEET 5).
- b. PRODUCT SPECIFICATION SEE: PS-33472-000
 CONTAINS: PRODUCT INTRODUCTION, PRODUCT SUMMARY, RATINGS (CURRENT, TEMPERATURE, SEALING, AND FLAMMABILITY), TERMINALS, WIRE DIAMETER RANGE, PRODUCT VALIDATION, AND PRODUCT DEVIATIONS.
- c. PACKAGING SPECIFICATION PER MOLEX DRAWING: PK-31300-635
- d. PARTS MUST BE IN COMPLIANCE TO MOLEX CHEMICAL SUBSTANCES FOR PRODUCTS AND PACKAGING SPECIFICATION: OEHS-699000-300
- e. DATA MUST BE SUBMITTED UNDER THE MOLEX PART NUMBER TO IMDS (COMPANY ID#13255)
2. DESIGN - MATERIALS:
- a. SEE BOM TABLE IN SD-33482-0002
3. DESIGN - GEOMETRY:
- a. THE 3-D CAD DATA IS BASIC (WITHOUT TOLERANCE) AND MASTER FOR THIS PART WITH THE EXCEPTION OF UNDERLINED DIMENSIONS. DIMENSIONAL INFORMATION NOT SHOWN ON THIS DRAWING IS DEFINED BY THE DATA FILE AT ITS LATEST REVISION.
- b. GEOMETRIC DIMENSIONS AND TOLERANCES PER ASME Y14.5M-2009
- c. EDGES AND UNDIMENSIONED DETAILS PER ISO13715
- d. CORNERS SHOWN AS SHARP TO BE R 0.2 MAX.
- e. LETTERING SHALL BE 0.15 MAX RAISED IN 0.25 MAX RECESS PAD. THIS INCLUDES RECYCLING CODE, CAVITY ID, VENDOR IDENTIFICATION, AND CUSTOMER MATERIAL NUMBER.
- f. VISUAL DEFECTS SHALL MEET COSMETIC STANDARD PS-45499-002 (Class B).
- g. LASER MARKING:
- PART NUMBER
 - DAY OF THE YEAR
 - SHIFT
 - YEAR
- FOR ADDITIONAL INFORMATION SEE SECTION 5 UNDER PROCEDURES IN ES-34735-008.

MATING CONNECTOR DRAWINGS

DESCRIPTION	MOLEX INLINE
2X2	SD-33472-041
2X3	SD-33472-061
2X4	SD-33472-081
2X6	SD-33472-121
2X8	SD-33472-161
2X10	SD-33472-201



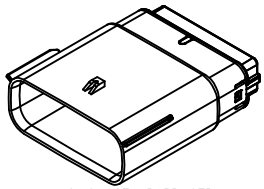
2x10

INSPECTION NUMBER LOG	
LAST NUMBER: 9	A
ADDED:	INITIAL RELEASE
REMOVED:	REV DESCRIPTION

ENTER DESCRIPTION EEC NO: UA02014-1671 DRAWN BY: APROFFITT 2014/04/28 CHECKED BY: KBORUSZEWSKI 2014/04/29 APPROVED BY: APPRAVKOSHY 2014/05/14	QUALITY SYMBOLS ▽=0 ▽=0 ▽=0	GENERAL TOLERANCES (UNLESS SPECIFIED)		DIMENSION STYLE MM ONLY		DRAWN BY: APROFFITT 2014/04/28 CHECKED BY: KBORUSZEWSKI 2014/04/29 APPROVED BY: VKOSHY 2014/05/14	TITLE MX150 BLADE DUAL ROW SEALED ASSEMBLY MAT SEAL molex	SCALE 1.5:1	DESIGN UNITS METRIC	THIRD ANGLE PROJECTION			
		4 PLACES ± --- ± --- 3 PLACES ± --- ± --- 2 PLACES ± 0.10 ± --- 1 PLACE ± 0.2 ± --- 0 PLACE ± --- ± ---		ANGULAR ± 1 ° DRAFT WHERE APPLICABLE MUST REMAIN WITHIN DIMENSIONS							MATERIAL NO. SEE NOTE 2a.	DOCUMENT NO. SD-33482-0001	
													SHEET NO. 1 OF 6

THIS DRAWING CONTAINS INFORMATION THAT IS PROPRIETARY TO MOLEX INCORPORATED AND SHOULD NOT BE USED WITHOUT WRITTEN PERMISSION

SHEET DESCRIPTION
CONFIGURATIONS



2X10 - STANDARD (STD)

ENTER DESCRIPTION EC NO: UAU2014-1671 DRAWN/APPROV ITT 2014/04/28 CHKORBORUSZEWSKI 2014/04/29 APPR:VKOSHY 2014/05/14	QUALITY SYMBOLS ▽=0 ▽=0 ▽=0	GENERAL TOLERANCES (UNLESS SPECIFIED)		DIMENSION STYLE MM ONLY		SCALE 2.5:1	DESIGN UNITS METRIC	THIRD ANGLE PROJECTION	
		4 PLACES	± ---	± ---	mm	INCH	DRAWN BY APROFFITT	DATE 2014/04/28	TITLE MX150 BLADE DUAL ROW SEALED ASSEMBLY MAT SEAL molex
		3 PLACES	± ---	± ---	± 0.10	± ---	CHECKED BY KBORUSZEWSKI	DATE 2014/04/29	
		2 PLACES	± 0.10	± ---	± 0.2	± ---	APPROVED BY VKOSHY	DATE 2014/05/14	
1 PLACE	± 0.2	± ---	ANGULAR ± 1 °	DRAFT WHERE APPLICABLE MUST REMAIN WITHIN DIMENSIONS	MATERIAL NO. SEE NOTE 2a.	DOCUMENT NO. SD-33482-0001	SHEET NO. 2 OF 6		
SIZE 1 THIS DRAWING CONTAINS INFORMATION THAT IS PROPRIETARY TO MOLEX INCORPORATED AND SHOULD NOT BE USED WITHOUT WRITTEN PERMISSION									

SHEET DESCRIPTION
KEY CONFIGURATIONS

2X2 (SEE SD-33482-041)

2X3 (SEE SD-33482-061)

2X4 (SEE SD-33482-081)

ENTER DESCRIPTION EC NO: UA12014-1671 DRWN: APROFF ITT 2014/04/28 CHKD: KBORUSZEWSKI 2014/04/29 APPR: VKOSHY 2014/05/14	QUALITY SYMBOLS ∇=0 ∇=0 ∇=0	GENERAL TOLERANCES (UNLESS SPECIFIED)		DIMENSION STYLE MM ONLY		SCALE 3:1	DESIGN UNITS METRIC	THIRD ANGLE PROJECTION			
		4 PLACES ± --- ± ---	3 PLACES ± --- ± ---	2 PLACES ± 0.10 ± ---	1 PLACE ± 0.2 ± ---	0 PLACE ± --- ± ---	mm	INCH	DRAWN BY APROFF ITT	DATE 2014/04/28	TITLE MX150 BLADE DUAL ROW SEALED ASSEMBLY MAT SEAL
		DRAFT WHERE APPLICABLE MUST REMAIN WITHIN DIMENSIONS		ANGULAR ± 1 °		SEE NOTE 2a.		MATERIAL NO.		DOCUMENT NO.	SHEET NO.
		SEE NOTE 2a.		SEE NOTE 2a.		SEE NOTE 2a.		SEE NOTE 2a.		SEE NOTE 2a.	
THIS DRAWING CONTAINS INFORMATION THAT IS PROPRIETARY TO MOLEX INCORPORATED AND SHOULD NOT BE USED WITHOUT WRITTEN PERMISSION											

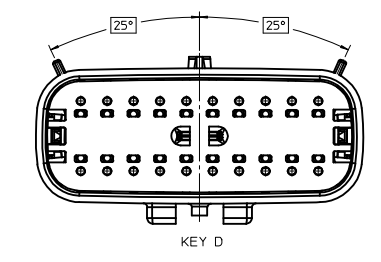
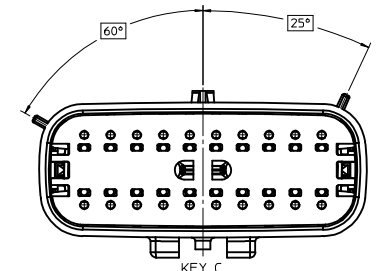
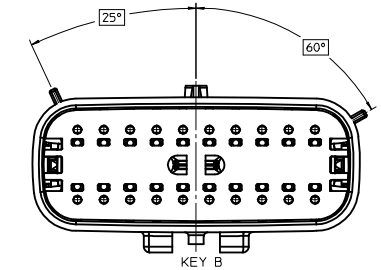
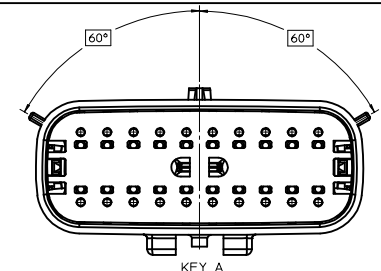
20 19 18 17 16 15 14 13 12 11 10 9 8 7 6 5 4 3 2 1

SHEET DESCRIPTION
KEY CONFIGURATIONS CONT.

2X6 (SEE SD-33482-121)

2X8 (SEE SD-33482-161)

2X10



REV	DESCRIPTION	QUALITY SYMBOLS	
		$\nabla=0$	$\nabla=0$
A	ENTER DESCRIPTION EC NO: UA02014-1671 DRAWN BY: APROFFITT 2014/04/28 CHKD BY: KBORUSZEWSKI 2014/04/29 APPR BY: VKOSHY 2014/05/14	$\nabla=0$	$\nabla=0$

GENERAL TOLERANCES (UNLESS SPECIFIED)	
mm	INCH
4 PLACES ± ---	± ---
3 PLACES ± ---	± ---
2 PLACES ± 0.10	± ---
1 PLACE ± 0.2	± ---
0 PLACE ± ---	± ---

DIMENSION STYLE	
MM ONLY	
DRAWN BY	DATE
APROFFITT	2014/04/28
CHECKED BY	DATE
KBORUSZEWSKI	2014/04/29
APPROVED BY	DATE
VKOSHY	2014/05/14
MATERIAL NO.	
SEE NOTE 2a.	

SCALE	DESIGN UNITS	THIRD ANGLE PROJECTION
3:1	METRIC	<input checked="" type="checkbox"/>

TITLE		DOCUMENT NO.	SHEET NO.
MX150 BLADE DUAL ROW SEALED ASSEMBLY MAT SEAL		SD-33482-0001	4 OF 6
molex			
THIS DRAWING CONTAINS INFORMATION THAT IS PROPRIETARY TO MOLEX INCORPORATED AND SHOULD NOT BE USED WITHOUT WRITTEN PERMISSION			

1d_frame_A1_P_AM_T Rev. G 2012/01/11

19 18 17 16 15 14 13 12 11 10 9 8 7 6 5 4 3 2 1

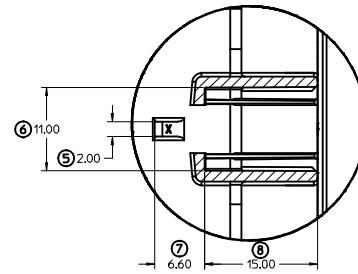
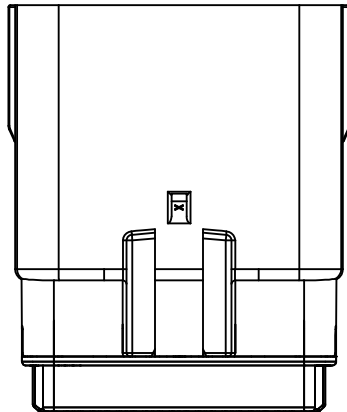
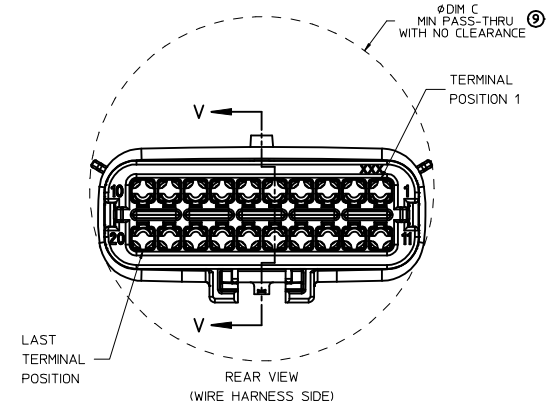
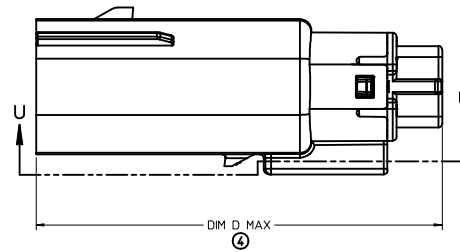
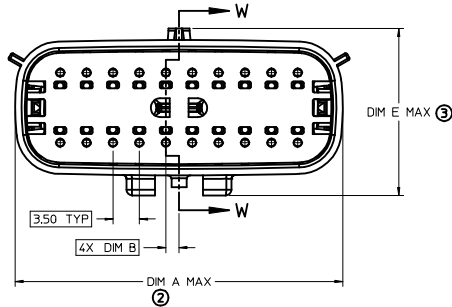
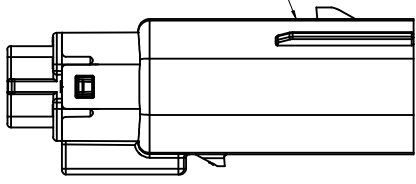
SHEET DESCRIPTION

BLADE SEALED ASSEMBLY

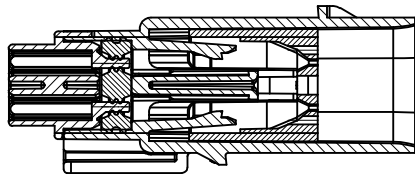
CHARTED DIMENSIONS

DESCRIPTION	DIMENSIONS				
	A	B	C	D	E
2X10	43.64	1.75	45.65	54.45	22.05

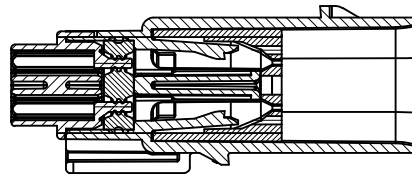
OPTIONAL LASER MARKING ON THIS SURFACE SEE NOTE 3g.



Partial U-U
SCALE 3:1



PRIMARY LOCK REINFORCEMENT (PLR) SHOWN IN PRE-STAGED POSITION
SECTION W-W



PRIMARY LOCK REINFORCEMENT (PLR) SHOWN IN FINAL-LOCK POSITION
SECTION V-V

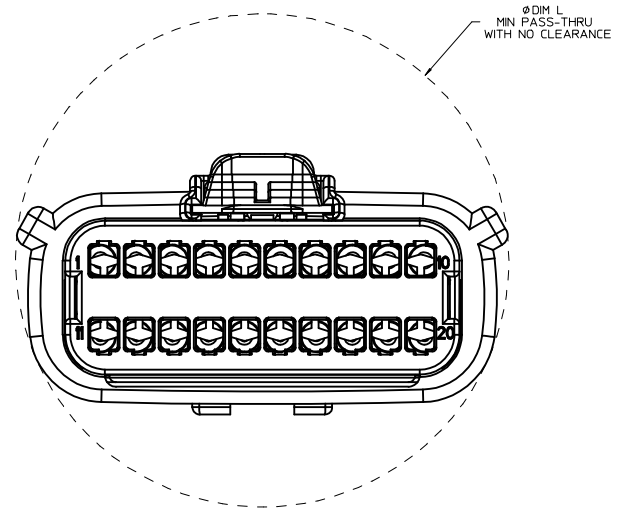
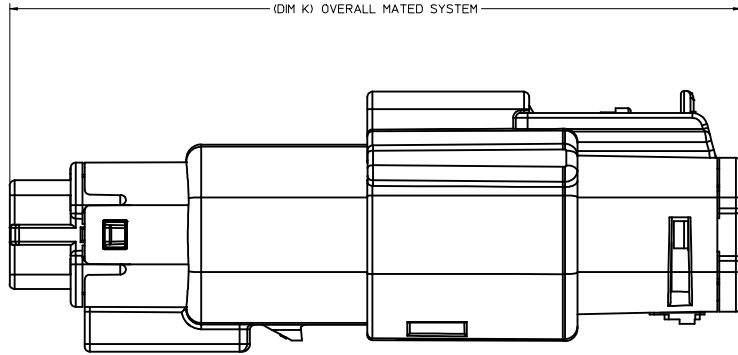
ENTER DESCRIPTION IEC NO: UAU2014-1671 DRAWN BY: APROFF ITT 2014/04/28 CHKD BY: KBORUSZEWSKI 2014/04/29 APPR: VKOSHY 2014/05/14	QUALITY SYMBOLS ∇=0 ∇=0 ∇=0	GENERAL TOLERANCES (UNLESS SPECIFIED)		DIMENSION STYLE MM ONLY	SCALE 3:1	DESIGN UNITS METRIC	THIRD ANGLE PROJECTION	
		4 PLACES ± --- ± --- 3 PLACES ± --- ± --- 2 PLACES ± 0.10 ± --- 1 PLACE ± 0.2 ± --- 0 PLACE ± --- ± ---	ANGULAR ± 1 ° DRAFT WHERE APPLICABLE MUST REMAIN WITHIN DIMENSIONS	DRAWN BY DATE APROFF ITT 2014/04/28 CHECKED BY DATE KBORUSZEWSKI 2014/04/29 APPROVED BY DATE VKOSHY 2014/05/14	MATERIAL NO. SEE NOTE 2a.	DOCUMENT NO. SD-33482-0001	SHEET NO. 5 OF 6	
		TITLE MX150 BLADE DUAL ROW SEALED ASSEMBLY MAT SEAL						molex
		THIS DRAWING CONTAINS INFORMATION THAT IS PROPRIETARY TO MOLEX INCORPORATED AND SHOULD NOT BE USED WITHOUT WRITTEN PERMISSION						

SHEET DESCRIPTION

SYSTEM PACKAGING

CHARTED DIMENSIONS

CKT	BLADE CONFIGURATION	RECEPTACLE CONFIGURATION	DIMENSIONS	
			K	L
2X10	STANDARD	STANDARD	72.78	49.05



ENTER DESCRIPTION EC NO: UA02014-1671 DRAWN BY: ITT 2014/04/28 CHKD BY: KBORUSZEWSKI 2014/04/29 APPR BY: VKOSHY 2014/05/14	QUALITY SYMBOLS ∇=0 ∇=0 ∇=0	GENERAL TOLERANCES (UNLESS SPECIFIED)		DIMENSION STYLE MM ONLY	SCALE 4:1	DESIGN UNITS METRIC	THIRD ANGLE PROJECTION		
		4 PLACES ± --- ± --- 3 PLACES ± --- ± --- 2 PLACES ± 0.10 ± --- 1 PLACE ± 0.2 ± --- 0 PLACE ± --- ± ---	mm INCH	DRAWN BY DATE APPROFF ITT 2014/04/28	CHECKED BY DATE KBORUSZEWSKI 2014/04/29	APPROVED BY DATE VKOSHY 2014/05/14	TITLE MX150 BLADE DUAL ROW SEALED ASSEMBLY MAT SEAL		
		ANGULAR ± 1 °		MATERIAL NO. SEE NOTE 2a.		DOCUMENT NO. SD-33482-0001			SHEET NO. 6 OF 6
		DRAFT WHERE APPLICABLE MUST REMAIN WITHIN DIMENSIONS		THIS DRAWING CONTAINS INFORMATION THAT IS PROPRIETARY TO MOLEX INCORPORATED AND SHOULD NOT BE USED WITHOUT WRITTEN PERMISSION					