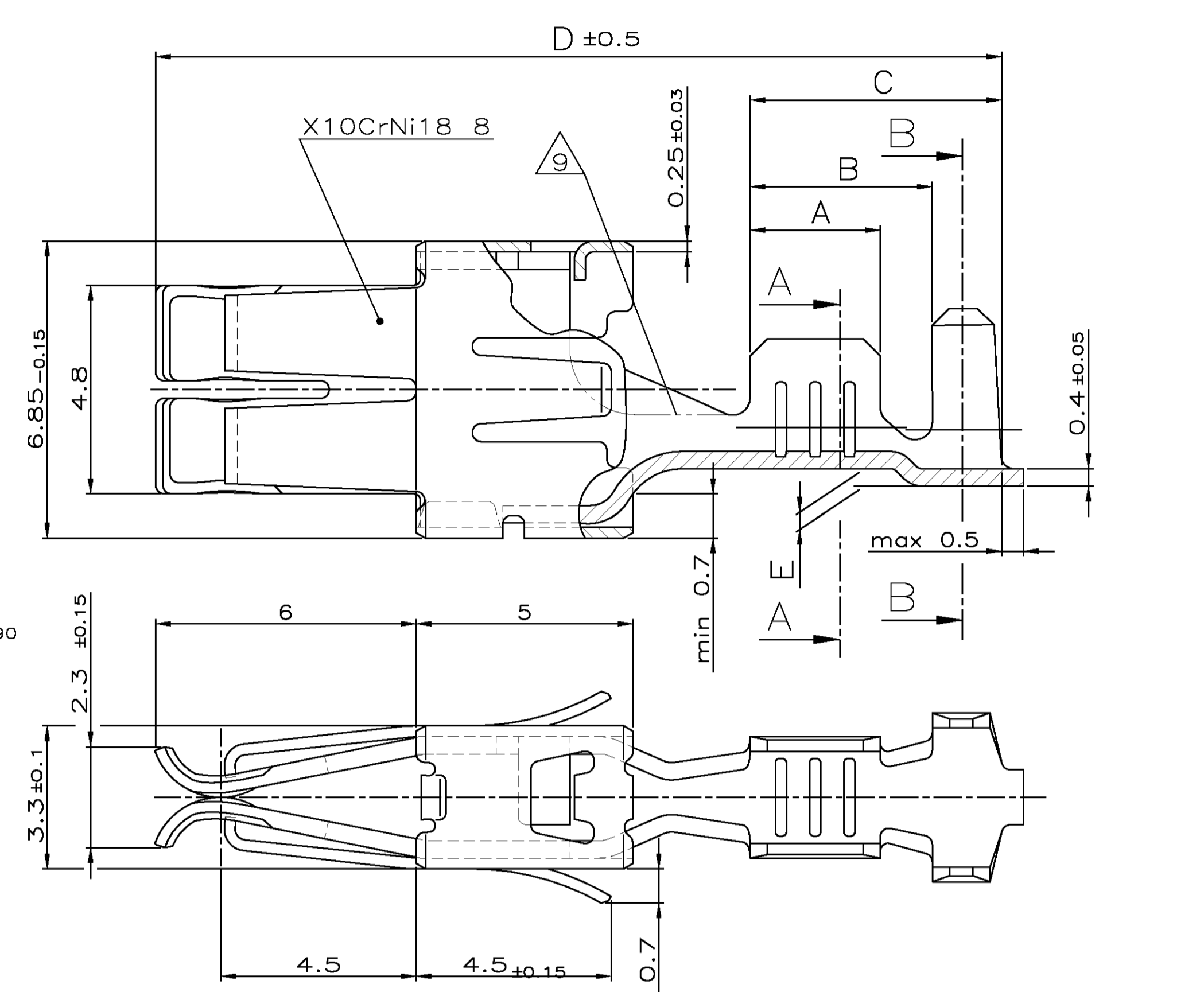
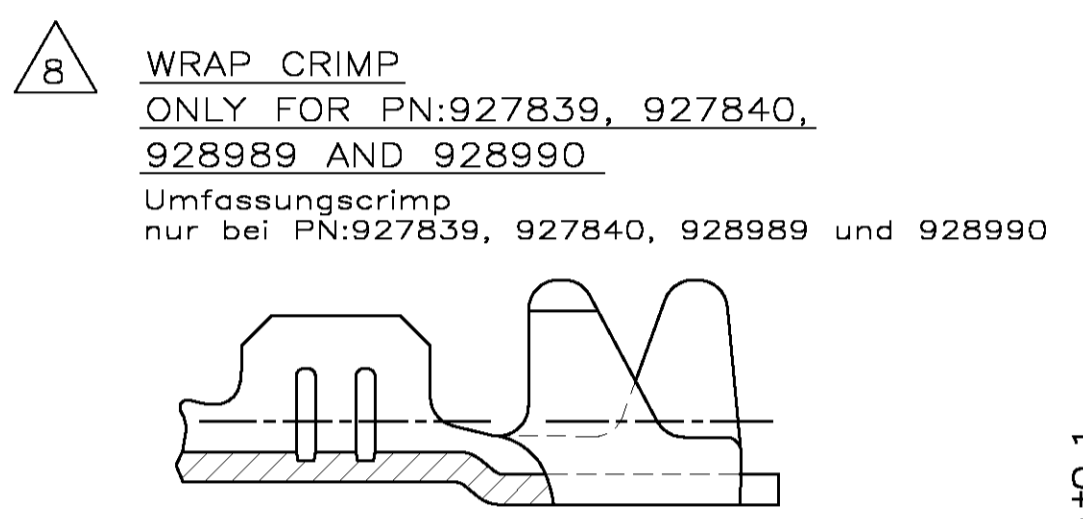
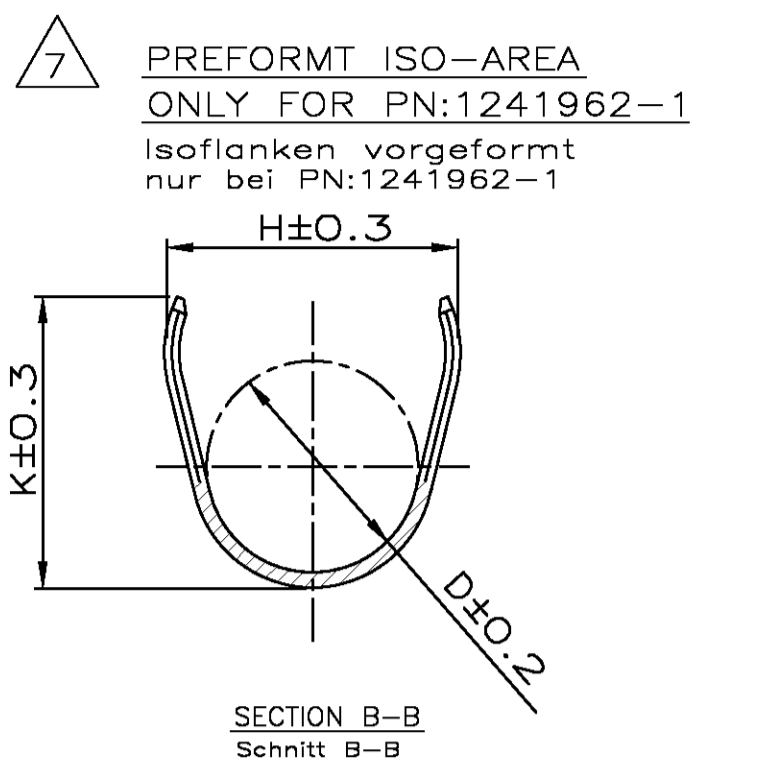


SECTION A-A Schnitt A-A	SECTION B-B Schnitt B-B	WIRE CRIMP Drahtkrimp	SECTION A-A Schnitt A-A	SECTION B-B Schnitt B-B																			
					927839-5	928989-5	CuFe2	vorverzinnt PRESILVERED	0.2-0.5	FLK	E = 2.2 G = 2.2 D <sub>cr</sub> = 0.8	H = 3.7 K = 3.8 D = 2.0	0.20mm <sup>2</sup> = 1.13 0.25mm <sup>2</sup> = 1.15 0.35mm <sup>2</sup> = 1.19 0.50mm <sup>2</sup> = 1.26	E = 2.0 G = 2.3 D <sub>cr</sub> = 0.8	H = 3.3 K = 3.45 R = 1.9	MGC-Applicator 878426-2	539635-1 WITH DIE MIT MATRIZEN 539744-2	2.5	3.8	6.6	19.5	0.3	

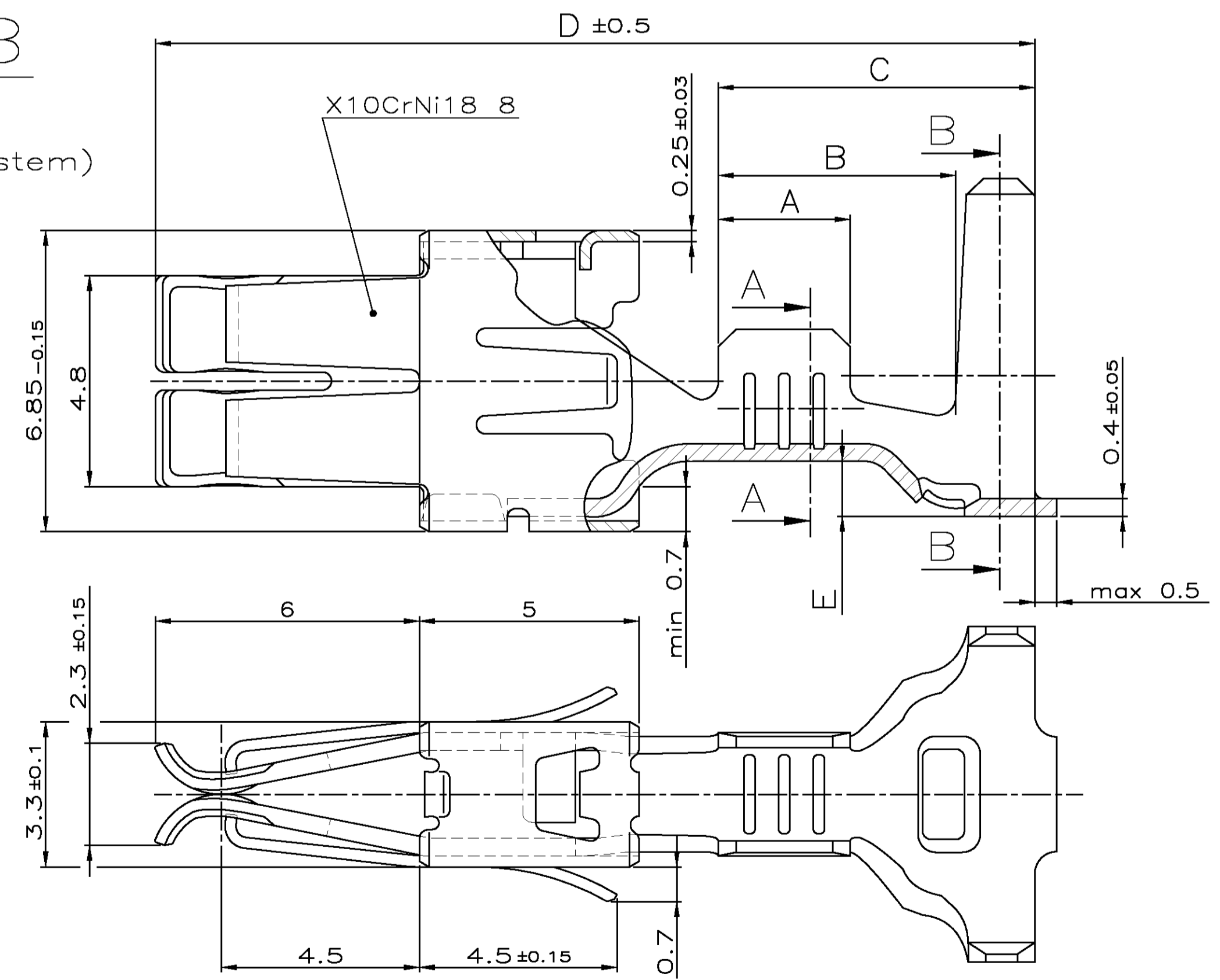
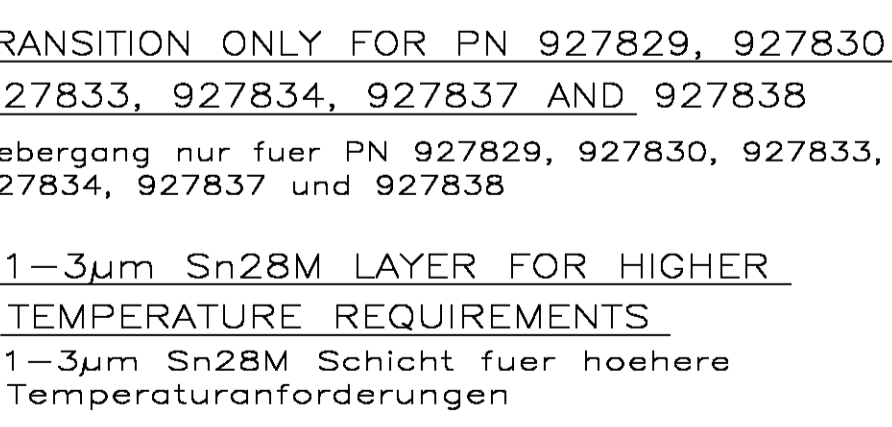
# VERSION A

(UNSEALED / ungedichtet)



# VERSION B

(SINGLE WIRE SEAL / Einzel-Dichtungs-System)



TE ORDER-No.	TE ORDER-No.	MATERIAL	SURFACE	DBG	WIRE CRIMP	INSUL-CRIMP	CRIMP HEIGHT	WIRE CRIMP	INSUL-CRIMP	APPLICATION TOOL	HAND TOOL	EXTRACTION TOOL	TE ORDER-No.	
2-927836-2	2-928922-2	CuSn4	vorverzinnt PRESILVERED											

**REMARKS**  
Bemerkungen

**1** CONTACT ZONE SELECTIVE PRE SILVER PLATED MIN 3-4.5 μm  
Kontaktzone selektiv vorverzinnt min. 3-4.5 μm

**2** CONTACT ZONE SELECTIVE PRE SILVER PLATED MIN 1-1.5 μm  
Kontaktzone selektiv vorverzinnt min. 1-1.5 μm

**3** CONTACT BODY: ELECTRO TIN PLATED OVER NICKEL  
CONTACT AREA: GOLD PLATED  
Kontaktkoerper: gal. verzinkt ueber Nickel  
Kontaktzone: vergoldet

**4** CONTACT BODY: ELECTRO TIN PLATED OVER NICKEL  
CONTACT AREA: SELECTIVE NICKEL PLATED 2-4 μm  
Kontaktkoerper: gal. verzinkt ueber Nickel  
Kontaktzone: selektiv vernickelt 2-4 μm

**5** CONTACT BODY: ELECTRO TIN PLATED OVER NICKEL  
TOUCHING AREA TO CANTILEVER SPRING:  
SELECTIVE AU PLATED OVER NICKEL  
CANTILEVER SPRING: COMPLETELY AU PLATED  
Kontaktkoerper: gal. verzinkt ueber Nickel  
Anlageflaeche zur Ueberfeder selektiv Au ueber Ni beschichtet  
Ueberfeder: komplett Au beschichtet

**6** CONTACT BODY: ELECTRO TIN PLATED OVER NICKEL  
TOUCHING AREA TO CANTILEVER SPRING AND CONTACT AREA:  
SELECTIVE AU PLATED OVER NICKEL  
CANTILEVER SPRING: COMPLETELY AU PLATED  
Kontaktkoerper: gal. verzinkt ueber Nickel  
Anlageflaeche zur Ueberfeder Kontaktzone: selektiv Au ueber Ni beschichtet  
Ueberfeder: komplett Au beschichtet

**9** TRANSITION ONLY FOR PN 927829, 927830, 927833, 927834, 927837 AND 927838  
Uebergang nur fuer PN 927829, 927830, 927834, 927837 und 927838

**10** 1-3μm Sn28M LAYER FOR HIGHER TEMPERATURE REQUIREMENTS  
1-3μm Sn28M Schicht fuer hoehere Temperaturanforderungen

PROJECT NR.	REV	DESCRIPTION	DATE	APPV
A1	A8	TYPING MISTAKE ON TABLE PN 1-1241818-8 AND 1-1241818-6 WAS PN 1241818-6 AND 1241818-6 CORRECTED.	11-DEC-07	Abraham
	A9	NOTE B PN 927839 AND 928989 ADDED.	13-MAY-08	Abraham
	A10	NOTE 9 CHANGED	10-JUN-08	Hilbert
	A11	PN 927829 AND 927837 WRONG REV. CORRECTED.	19-AUG-08	Abraham
	A12	PN 927833-1 /-2 /-5 REV. ADAPTED TO C	25JUN2009	Abraham
A13	NOTE 9 PN 927834 LP ADDED.	23JUL2009	Abraham	

17-MAY-00 M. PFEILSCHIFTER	17-MAY-00 V. HUHN	Tyco Electronics	tyco Electronics AMP GmbH D - 64625 Bensheim
18-MAY-00 M. BLEICHER			
PRODUCT SPEC 108-18025 114-18037			STANDARD POWER TIMER CONTACT Standard Power Timer Kontakt
EXTRACTION TOOL 1-1579007-6 968107-1	FINISH/OBERFLAECHE/FARBE -	WEIGHT -	RESTRICTED TO NUR FÜR
CUSTOMER DRAWING/KUNDENZEICHNUNG			10:1