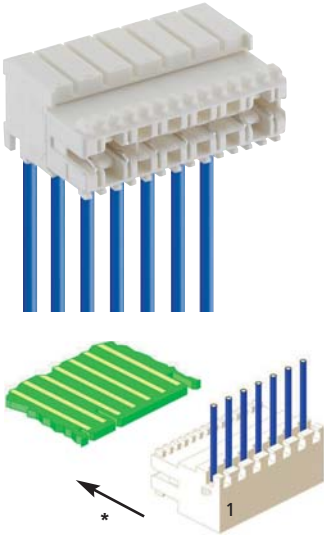
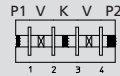


Kodierungen nach RAST 5 für Macromodul-Steckverbinder 3636
Keyings according to RAST 5 for Macromodul connector 3636
Codages suivant RAST 5 pour connecteurs Macromodul 3636



3636

Für diesen Steckverbinder schlägt Lumberg die unten dargestellten Kodierungen vor. Weitere Kodierungen sind auf Anfrage möglich.



K Kodierung
 P Positionierung
 V Verriegelung

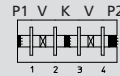
Steckweise direkt, auf den Leiterplattenrand:

Kodierung durch Kodierstege und geschlossene Seitenwände (Positionierung) kodiert. Die Leiterplatte hat dazu passende Ausnehmungen

Alle Zeichnungen in Steckrichtung (*) gesehen

3636

For this connector, Lumberg proposes the keyings listed below. Further keyings are possible on request.



K keying
 P positioning
 V lock

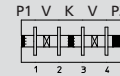
Direct connection, with the printed circuit board edge:

Keying by means of keying ribs and closed sides (positioning). The circuit board has matching reliefs

All drawings in view of mating direction (*)

3636

Pour ce connecteur Lumberg propose les codages ci-dessous. Autres codages sont possibles sur demande.



K codage
 P positionnement
 V verrouillage

Connexion directe, avec le board de la carte imprimée:

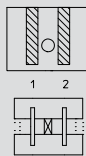
Codage par cloisons de codage et parois latérales fermées (positionnement). La carte imprimée possède des fentes adéquates

Tous dessins vus dans le sens d'enfichage (*)

2

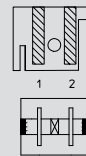
2-polig
 2 poles
 2 pôles

3636 02 K01



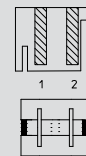
Kodierung/keying/codage:
 V1/2

3636 02 K02



Kodierung/keying/codage:
 P1 P2 V1/2

3636 02 K06

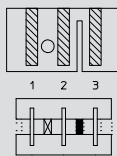


Kodierung/keying/codage:
 P1 P2

3

3-polig
 3 poles
 3 pôles

3636 03 K06

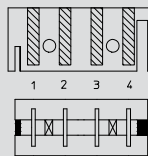


Kodierung/keying/codage:
 K2/3 V1/2

4

4-polig
 4 poles
 4 pôles

3636 04 K02

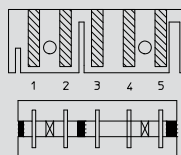


Kodierung/keying/codage:
 P1 P2 V1/2 V3/4

5

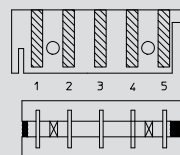
5-polig
 5 poles
 5 pôles

3636 05 K02



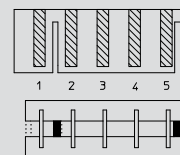
Kodierung/keying/codage:
 P1 P2 K2/3 V1/2 V4/5

3636 05 K04



Kodierung/keying/codage:
 P1 P2 V1/2 V4/5

3636 05 K06

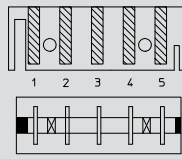


Kodierung/keying/codage:
 P2 K1/2

5

5-polig (Fortsetzung)
 5 poles (continued)
 5 pôles (suite)

3636 05 K09

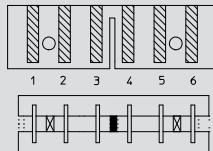


Kodierung/keying/codage:
 P1 P2 V1/2 V4/5

6

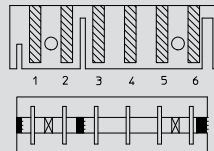
6-polig
 6 poles
 6 pôles

3636 06 K02



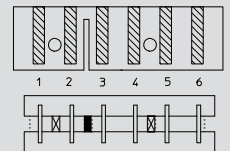
Kodierung/keying/codage:
 K3/4 V1/2 V5/6

3636 06 K03



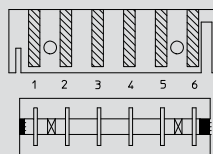
Kodierung/keying/codage:
 P1 P2 K2/3 V1/2 V5/6

3636 06 K07



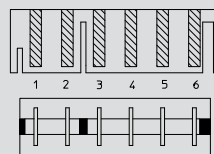
Kodierung/keying/codage:
 K2/3 V1/2 V4/5

3636 06 K09



Kodierung/keying/codage:
 P1 P2 V1/2 V5/6

3636 06 K12

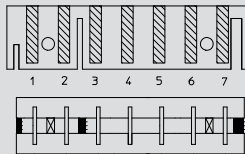


Kodierung/keying/codage:
 P1 P2 K2/3

7

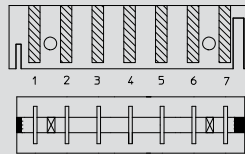
7-polig
 7 poles
 7 pôles

3636 07 K03



Kodierung/keying/codage:
 P1 P2 K2/3 V1/2 V6/7

3636 07 K05

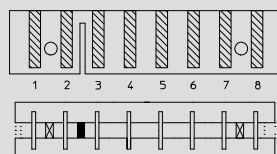


Kodierung/keying/codage:
 P1 P2 V1/2 V6/7

8

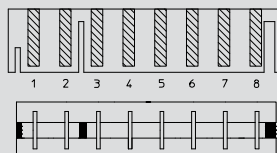
8-polig
 8 poles
 8 pôles

3636 08 K04



Kodierung/keying/codage:
 K2/3 V1/2 V7/8

3636 08 K06

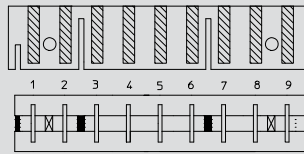


Kodierung/keying/codage:
 P1 P2 K2/3

9

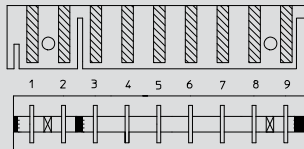
9-polig
 9 poles
 9 pôles

3636 09 K01



Kodierung/keying/codage:
 P1 K2/3 K6/7 V1/2 V8/9

3636 09 K02

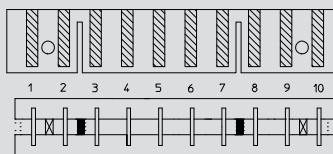


Kodierung/keying/codage:
 P1 P2 K2/3 V1/2 V8/9

10

10-polig
 10 poles
 10 pôles

3636 10 K02

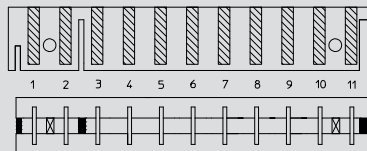


Kodierung/keying/codage:
 K2/3 K7/8 V1/2 V9/10

11

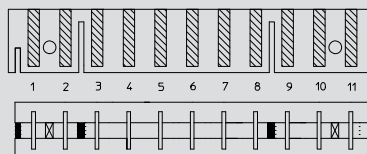
11-polig
 11 poles
 11 pôles

3636 11 K01



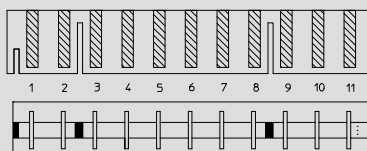
Kodierung/keying/codage:
 P1 P2 K2/3 V1/2 V10/11

3636 11 K02



Kodierung/keying/codage:
 P1 K2/3 K8/9 V1/2 V10/11

3636 11 K03

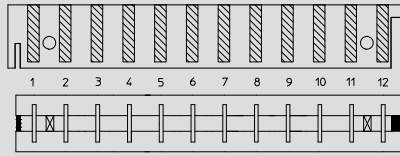


Kodierung/keying/codage:
 P1 K2/3 K8/9

12

12-polig
12 poles
12 pôles

3636 12 K01



Kodierung/keying/codage:
P1 P2 V1/2 V11/12