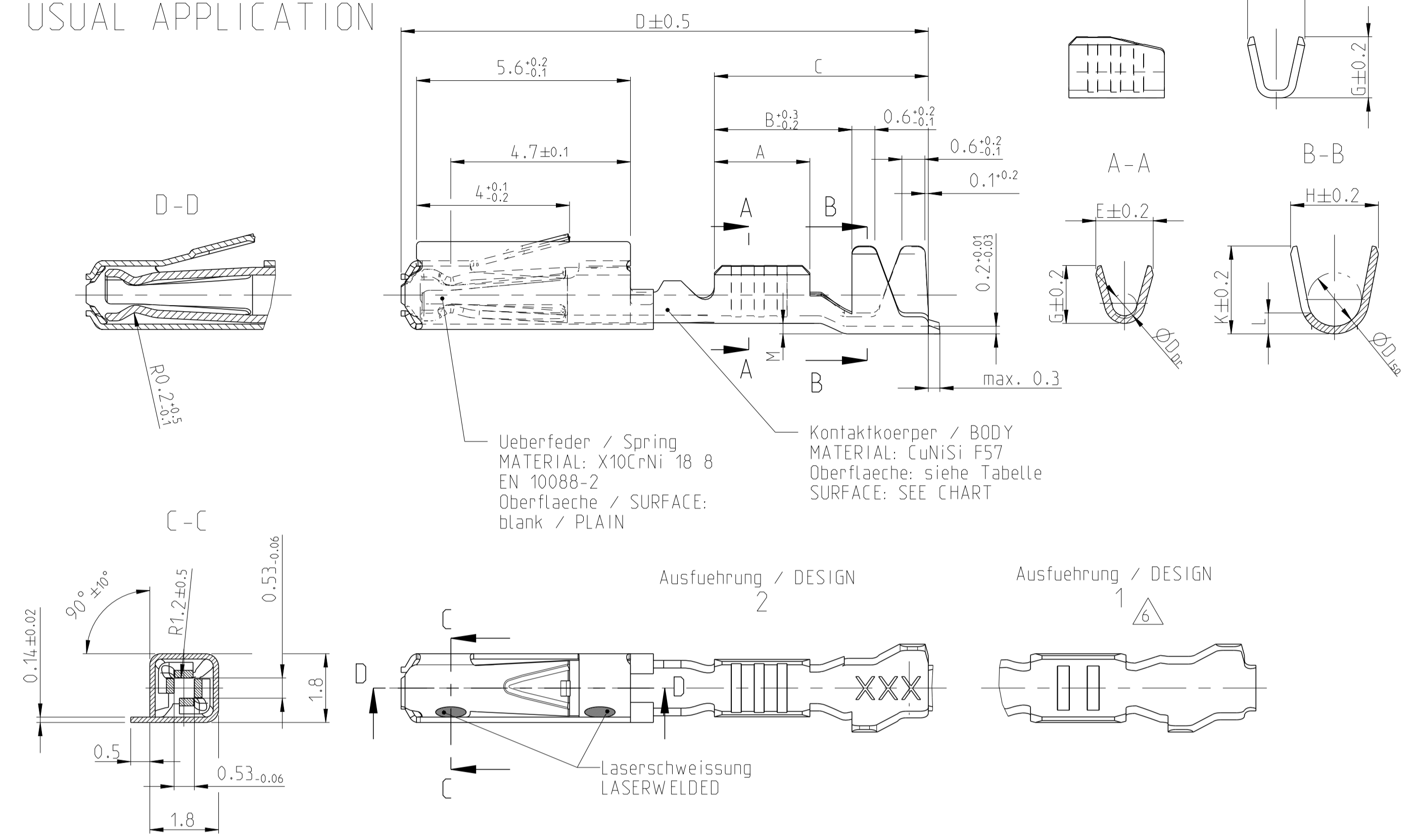
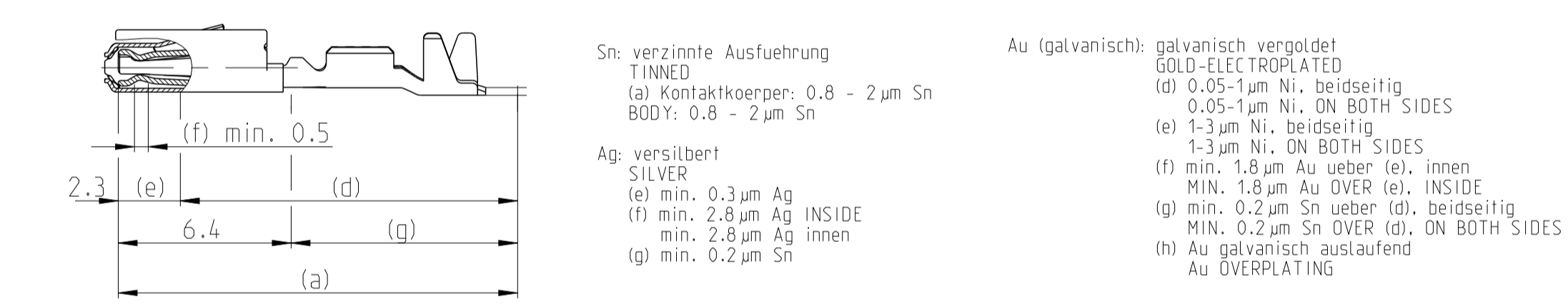


Normale Anwendung
 USUAL APPLICATION

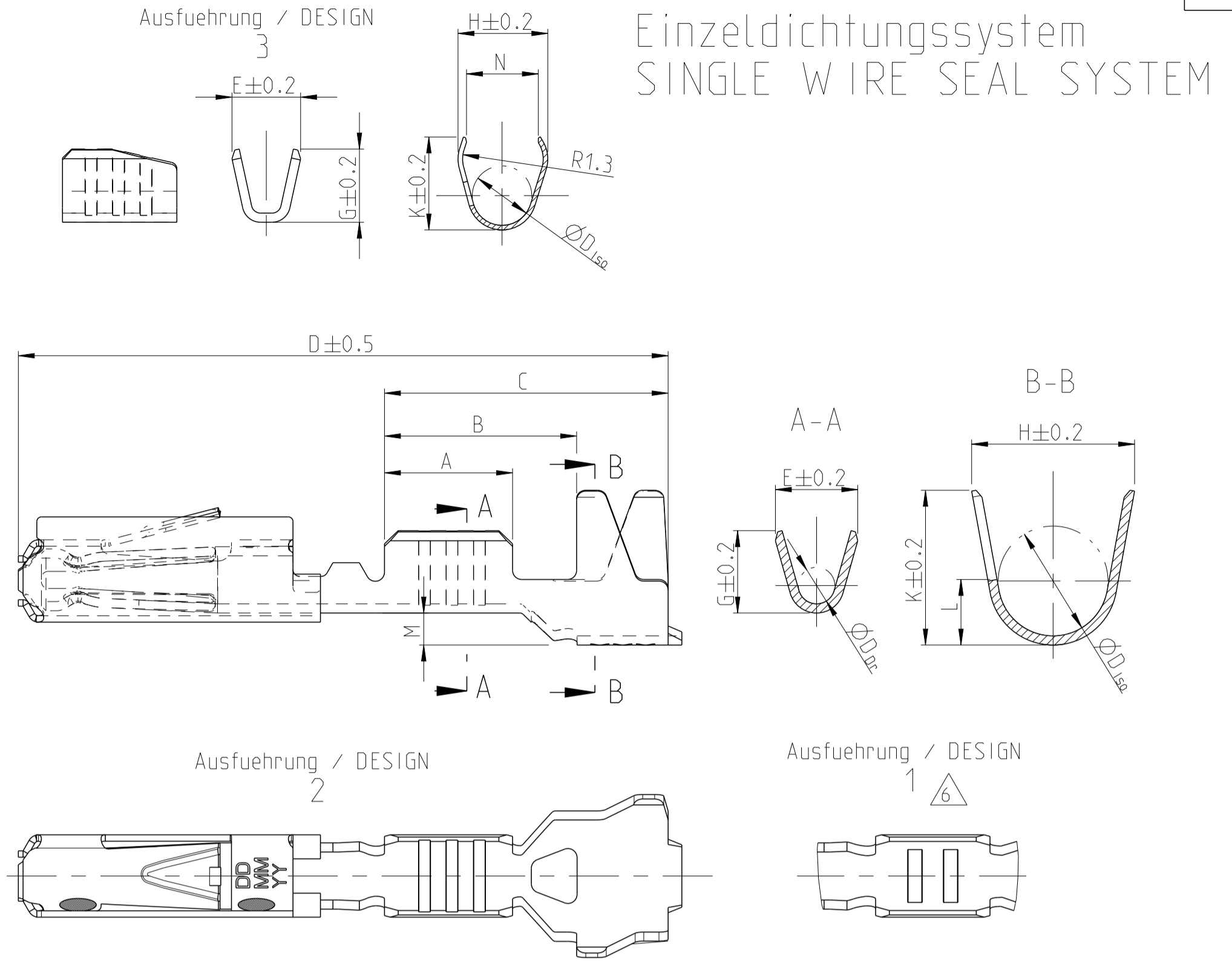


Oberflaeche / FINISH



Part No.	Material	Version	Wire Size	Surface	Length	Wire Crimp	Insulation	Weight	Notes
6-965906-5	Au+Gel	E	0.50-0.75	Au+Gel	A = 2.8, B = 4.2, C = 6.2, D = 14.3, M = 0.7	F = 2, G = 2.1, D _{Dr} = 1	H = 3.5, K = 3.4, L = 1.5, D _{ISO} = 2.4	0.13	114-18025
5-965906-6	Ag	D	0.25-0.35	Ag	A = 2.5, B = 3.9, C = 5.9, D = 14, M = 0.7	F = 1.8, G = 1.8, D _{Dr} = 0.8	H = 3.5, K = 3.4, L = 1.5, D _{ISO} = 2.4	0.13	114-18025
5-962885-6	Au	J	0.13 / 0.17	Ag	A = 2.5, B = 4.3, C = 6.2, D = 13.7, M = 0.6	F = 1.5, G = 1.4	H = 4, K = 4.1, L = 3.1, D _{ISO} = 2.6	0.1	114-18021
5-962885-5	Au	K	0.50-0.75	Au+Gel	A = 2.8, B = 3.8, C = 5.6, D = 13.7, M = 0.2	F = 2.1, G = 2.1, D _{Dr} = 1	H = 2.7, K = 2.9, L = 0.7, D _{ISO} = 1.6	0.11	114-18021
5-962885-1	Sn	J	0.25-0.35	Ag	A = 2.5, B = 3.6, C = 5.6, D = 13.7, M = 0.2	F = 1.8, G = 1.8, D _{Dr} = 0.8	H = 2.3, K = 2.3, L = 0.6, D _{ISO} = 1.4	0.11	114-18021
2141826-6	Ag	A	0.13 / 0.17	Ag	A = 2.5, B = 3.7, C = 5.4, D = 13.7, M = 0	F = 1.5, G = 1.4	H = 2, K = 1.9, D _{ISO} = 1.1	0.1	114-18021
2141826-5	Au	A	0.08-0.22	Au	A = 2.5, B = 3.7, C = 5.4, D = 13.7, M = 0	F = 1.5, G = 1.5, D _{Dr} = 0.65	H = 2, K = 2, D _{ISO} = 1.1	0.1	114-18021
2141826-1	Sn	A	0.08-0.22	Sn	A = 2.5, B = 3.7, C = 5.4, D = 13.7, M = 0	F = 1.5, G = 1.5, D _{Dr} = 0.65	H = 2, K = 2, D _{ISO} = 1.1	0.1	114-18021

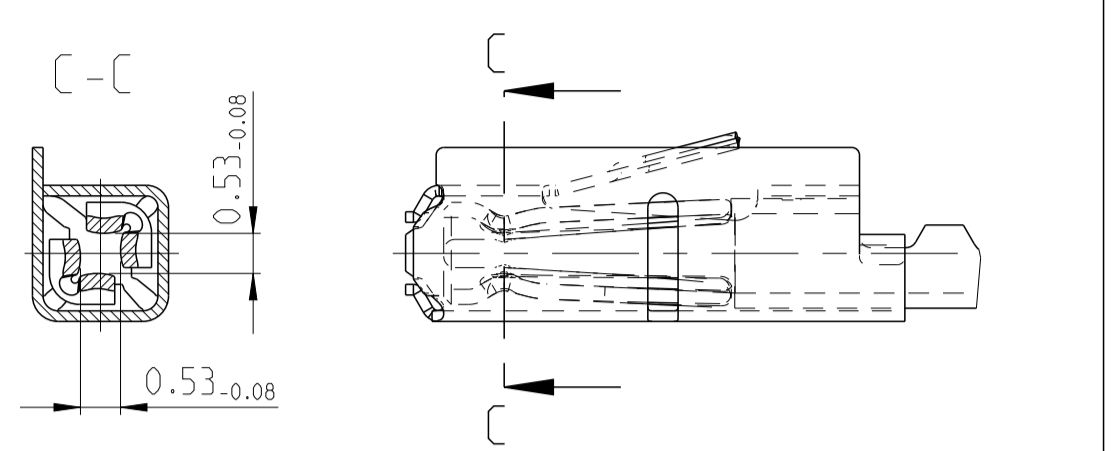
Bestell-Nr. / ORDER NO. / DESIGN	Bestell-Nr. / ORDER NO. / DESIGN	Rev	Bestell-Nr. / ORDER NO. / DESIGN	Rev	VERSION	DGB Wire Size Range mm ²	Oberflaeche SURFACE	Laenge LENGTH mm	Drahtcrimp WIRE CRIMP mm	Iso-crimp INSU-CRIMP mm	Gewicht WEIGHT g	Verarbeitung Spez. APPLICATION SPEC.	DGB Wire Size Range mm ²	Isolations Ø INSULATION DIA. mm	fuer Kammer Ø3.45 FOR CAVITY DIA. 3.45 mm	Blindstopfen RUBBER PLUG	fuer Kammer Ø4 FOR CAVITY DIA. 4 mm	Blindstopfen RUBBER PLUG
2	3		1		Einzelichtungssystem SINGLE WIRE SEAL SYSTEM	0.50-0.75	Au+Gel	2.8-14.3	2-0.7	3.5-2.4	0.13	114-18025	0.75	1.4-1.9	967067-1	gruen GREEN	963142-1	schwarz BLACK
2	3		1		normale Anwendung USUAL APPLICATION	0.25-0.35	Ag	2.5-14	1.8-0.8	3.5-2.4	0.13	114-18025	0.35	0.9-1.4	967067-2	gelb YELLOW	963142-2	grau GREY
2	3		1		normale Anwendung USUAL APPLICATION	0.13 / 0.17	Ag	2.5-13.7	1.5-0.6	4-2.6	0.1	114-18021	0.13	0.85-1.25	967067-2	gelb YELLOW	963142-2	grau GREY
2	3		1		normale Anwendung USUAL APPLICATION	0.50-0.75	Au+Gel	2.8-14.3	2-0.7	3.5-2.4	0.11	114-18021	0.50-0.75					
2	3		1		normale Anwendung USUAL APPLICATION	0.25-0.35	Ag	2.5-14	1.8-0.8	3.5-2.4	0.11	114-18021	0.25-0.35					
2	3		1		normale Anwendung USUAL APPLICATION	0.13 / 0.17	Ag	2.5-13.7	1.5-0.6	4-2.6	0.1	114-18021	0.13 / 0.17					
2	3		1		normale Anwendung USUAL APPLICATION	0.08-0.22	Au	2.5-13.7	1.5-0	2-1.1	0.1	114-18021	0.08-0.22					



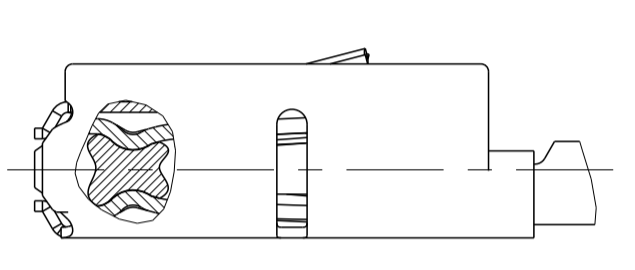
Einzelichtungssystem
 SINGLE WIRE SEAL SYSTEM

REV	DATE	BY	CHK	DESCRIPTION
C11	29JAN2013	Abt	Brun	ECR-13-001696
C12	20AUG2013	Abt	Brun	ECR-13-013114
C13	26SEP2013	Abt	Brun	ECR-13-015135
C14	06MAY2015	Abt	Brun	NOTE 8 ADDED. ECR-15-007039

vergoldete Ausfuehrung
 GOLD VERSION

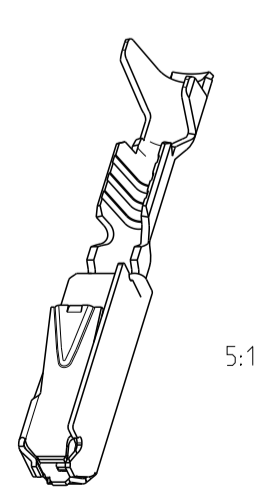
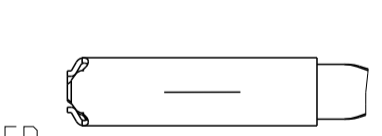
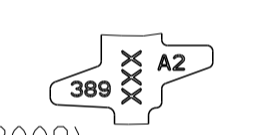


GEL VERSION



Bemerkungen

- Datumscode (woche/Jahr z.B. KW 38/Jahr2009) und TE-Revision (z.B. Rev.A) DATE CODE (WEEK/YEAR E.G. WEEK NUMBER 38/YEAR2009) AND TE REVISION (E.G. REV. A)
- Passend zu Stiftkontakt siehe Zeichnung 929453 SUITABLE FOR PIN CONTACT SEE DRAWING 929453
- Einzelheiten der Ausfuehrung bleiben dem Hersteller ueberlassen DETAILS OF DESIGN ARE LEFT TO MANUFACTURER
- Nur fuer FLR-Leitung nach DIN 72551 Teil 6 FOR FLR-CONDUCTOR ACCORDING TO DIN 72551-6 ONLY
- Fuer Ag Varianten sind keine Laboruntersuchungen verfuegbar deshalb sind diese PN 's nicht in der Produktspez. aufgefuehrt. FOR Ag VARIANTS TESTS ARE NOT AVAILABLE. Ag PN'S ARE NOT IN PRODUCTSPEC.
- nicht fuer Neuanwendung NOT FOR NEW APPLICATION
- zugestaerkte Leitung nach LV 112-4 REINFORCED WIRE ACCORDING LV 112-4
- Bei doppelt fallenden Werkzeugen wird die erste Ueberfeder mit einer Kennzeichnung "-" versehen WITH DOUBLE OUT DIES THE FIRST SPRING WILL BE PROVIDED WITH AN INDICATION "-"



THIS DRAWING IS A CONTROLLED DOCUMENT.		OWN: S.Garcia 05JAN1999	TE Connectivity	
DIMENSIONS: mm		CHK: R.Jetter 05JAN1999	MOS	
TOLERANCES UNLESS OTHERWISE SPECIFIED: ±0.2		APVD: M.Bleicher 13AUG2003	Tabellenzeichnung Buchsenkontakt TABLE SOCKET CONTACT	
MATERIAL: -		108-18030 APPLICATION SPEC	SIZE: 114-18021 / 114-18025	RESTRICTED TO: -
FINISH: -		WEIGHT: -	A1 00779	Customer Drawing
SCALE: 10:1		SHEET 1 OF 1		REV: C14