



Low-profile SlimRay™ Pre-Wired LED COB Array Holders simplify the LED installation process and reduce assembly time with compression contacts that eliminate hand soldering

SlimRay™ Pre-Wired LED Chip-On-Board (COB) Array Holders

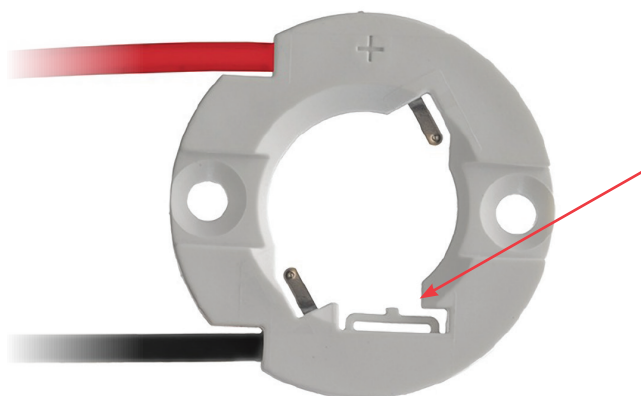
180555 Holder for LED COB Array 13.35 by 13.35mm

Features and Benefits

Pre-stripped, pre-installed color-coded power wires that eliminate the need for hand soldering	Enables intuitive anode and cathode identification. Reduces risk of damaging the LED COB. Designed for use with Cree* CXA13 arrays
Industry-leading low-profile design (3.15mm, based on 20 AWG wire)	Allows optics to be mounted closer to the LES (light emitting surface)
Wires terminated with proven Molex crimp-wire processes	Provides high durability and reliability for the life of the LED
Insert-molded attachment of wires to holder housings over 50N	Deliver superior wire-to-holder retention forces. Ensure a stable COB contact interface
Integrated LED pre-hold tab	Secures array prior to mounting the assembly to a heat sink. Minimizes installation time by allowing LED array to be secured to the holder prior to final assembly
Robust housing design	Ensures stable, long-term mechanical attachment even in high ambient temperatures
Gold-plated compression contacts interface with array pads	Provide stable power connections across a wide range of environments and conditions
Standard metric screw-mount reflector attachment	Provides secure reflector attachment with simple alignment and locking features



SlimRay™ Pre-Wired LED Array Holder for 13.35 by 13.35mm COB Arrays



Integrated pre-hold tab secures array prior to mounting assembly to heat sink

*Cree is a registered trademark of Cree, Inc.

Applications

All general illumination applications

- Downlighting
- Track
- Pendants
- Linear

Area Lighting

- Roadways
- Parking Lots
- Wall Packs



Recessed downlighting in residential and commercial buildings



Specifications

Reference Information

Packaging: Tray
 UL File No: TBD
 UL Rating Pending - 180555
 CSA File No.:
 E345583 – Pending: 180555
 Designed In: Millimeters
 RoHS: Yes
 REACH SVHC: Contains SVHC: No

Electrical

Voltage (max.): 600V DC
 Current (max.): 3.0A peak
 Contact Resistance :
 20 milliohms max. change
 Dielectric Withstanding Voltage:
 300V DC
 Insulation Resistance (min.) :
 5000 Megohms

Mechanical.

Wire Pull Out Force (min.) : 50N
 Durability (min.): 5 Cycles

Physical

Housing:
 White PBT 30% Glass fill UL 94V0
 Contact: Copper Alloy
 Plating:
 Contact Area — Gold (Au)
 Underplating — Nickel (Ni)

Ordering Information

Order No.	COB Footprint	Wire Colors	Wire Length	Integrated Pre-Hold Tab	Mounting Method	Wire Trap	Optical Attachment
180555-0001	13.35 by 13.35mm	Yellow, White	110.00mm(+/-5mm)	Yes	M2.5 Screw	No	Flat top
180555-0002	13.35 by 13.35mm	Red, Black	254.00mm(+/-5mm)	Yes	M2.5 Screw	No	Flat top