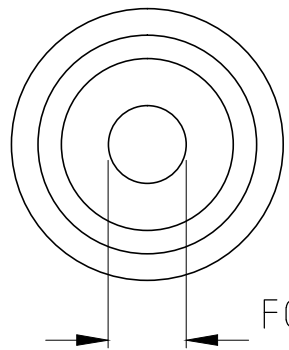
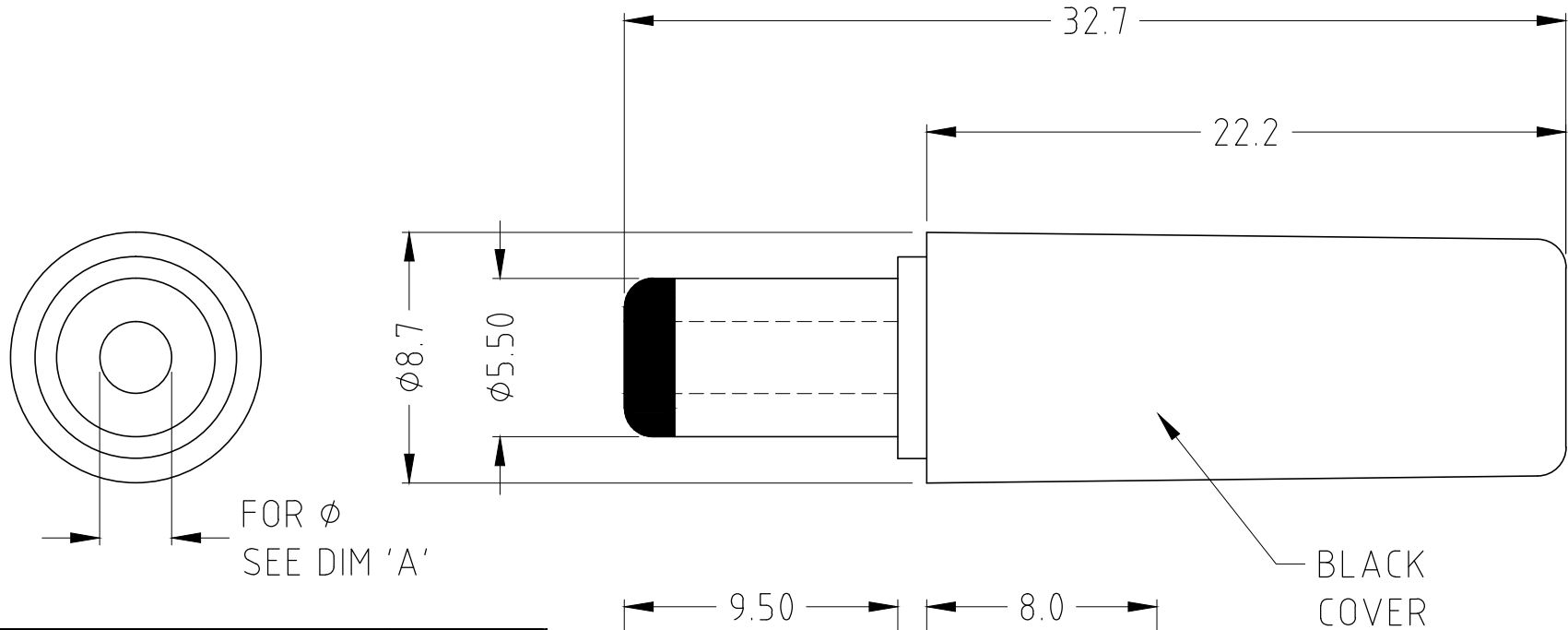
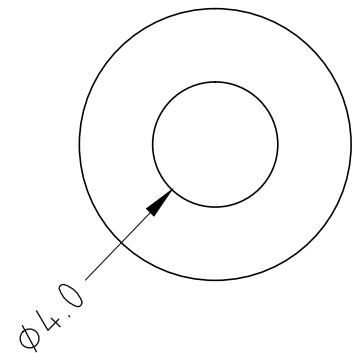


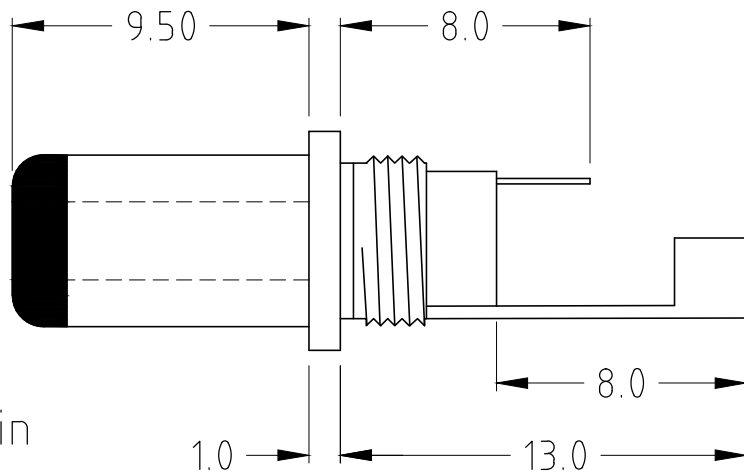
ISS.	AMEND	DATE
1	1st DRAWN	27/07/90
2	NOTE *	02/05/91
3	C MODELS ADD	01/02/94
4	F ADD, C MOD DEL	25/04/96
5	DIM D AMEND	06/02/07
6	DCPP3 B DIM ERROR	19/02/07
7	UPDATE TABLE+VIEWS	04/09/13
8	ALL OTHER VARIANTS DEL	15/06/15



FOR ϕ
SEE DIM 'A'



PART No.	MODEL	DIM A
FC68147	DCPP1	$\phi 2.1$
FC681471	DCPP2	$\phi 2.5$



Nominal Rating: 12V 5A (60VA)
 Dielectric Strength: AC 500V/1min
 Insulation Resistance: DC 500V/100M Ω

RoHS COMPLIANT	
TOLERANCE	
NO DEC. PLACE	± 0.50
1 DEC. PLACE	± 0.25
2 DEC. PLACE	± 0.10
HOLE ϕ	± 0.10
ANGLES	$\pm 1/2^\circ$
UNLESS OTHERWISE STATED	
DO NOT SCALE	

Cliff Electronic Components Ltd.

76 Holmethorpe Avenue, Holmethorpe Industrial Estate,
 Redhill, Surrey, RH1 2PF, England, UK
 Tel: 01737-771375 Fax: 01737-766012 Website: www.cliffuk.co.uk

DIMENSIONS IN MILLIMETERS UNLESS OTHERWISE STATED. WORK TO DIMENSIONS. REMOVE ALL BURRS. IF IN DOUBT ASK.

3rd ANGLE PROJECTION:

MATERIAL: ABS / POM / PBT / BRASS

FINISH: AS MOULDED / Ni PLATED

TITLE: DC CONNECTOR DCPP (FLANGED)

DRAWN: C.A.M.J.

APPROVED: R.W.T.

DRWG. No. **FC68147**

FORM: A4DRWG

THE CONTENTS OF THIS DOCUMENT MUST NOT BE COPIED OR DISCLOSED TO A 3rd PARTY WITHOUT WRITTEN PERMISSION OF CLIFF UK. © 1990