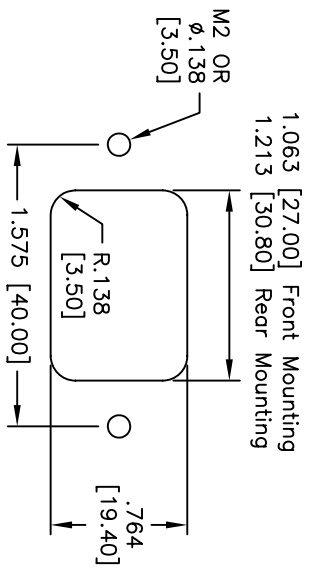
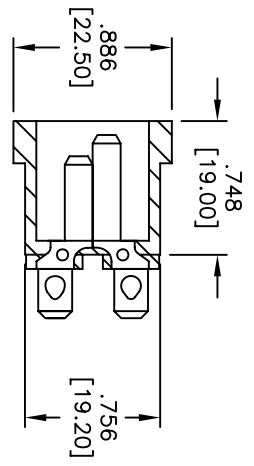
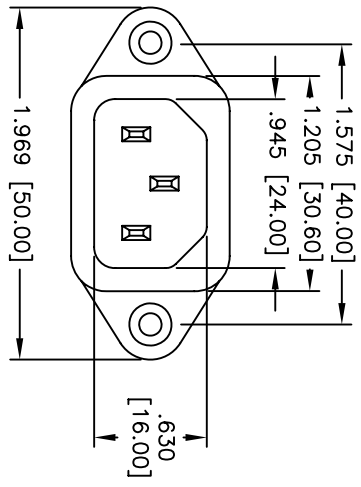
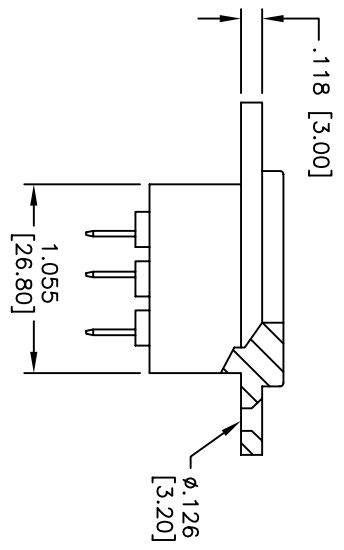


| Rev | AWO # | Description | Date | Appr |
|-----|-------|-------------|---------|------|
| - | | RELEASED | 6/16/05 | |

APPROVED: _____
 DATE: _____ TITLE: _____



RECOMMENDED PANEL CUT-OUT



| TERMINAL OPTIONS | TERMINAL OPTIONS | TERMINAL OPTIONS | TERMINAL OPTIONS |
|------------------|------------------|------------------|------------------|
| -1 | -2 | -3 | -5 |
| .187 Q.C. | .250 Q.C. | .157 Solder | .098 Solder |

SPECIFICATIONS:

Material:
 Insulator: PBT, glass reinforced, rated UL 94V-0
 Insulator color: Black
 Contacts: Brass
 Plating:
 Nickel over Copper underplate overall
 Solder terminals & Q.C. terminals: Tin over Copper underplate
Electrical:
 Operating voltage: 250 VAC
 Current rating: UL & CSA: 15 Amps max
 VDE: 10 Amps max
 Insulation resistance: 100 Mohms min @ 500 VDC
 Dielectric withstanding voltage: 2,000 VAC for 1 minute
 Temperature Rating:
 Operating temperature: -25°C to +70°C
Environmental:
 Lead free, RoHS compliant



| | |
|---|--------------|
| UNLESS OTHERWISE SPECIFIED ALL DIMENSIONS ARE IN INCHES [MM] | |
| TOLERANCES: EXCEPT AS NOTED | |
| INCHES | HOLDS |
| .X ± .10 | ØXX ± .10 |
| .XX ± .020 | ØXXX ± .015 |
| .XXX ± .015 | ØXXXX ± .010 |
| APPROVALS | DATE |
| DRAWN | SS |
| CHECKED | |
| APPROVED | |

ADAM TECH
 909 Railway Avenue, Union, NJ 07083
 Phone: 908-687-5000 Fax: 908-687-5710

| | | | |
|----------|------------|-----------------------------|--|
| TITLE | | IEC MALE INLET, PANEL MOUNT | |
| SIZE | PART NO. | IEC-A-X | |
| CHECKED | REV. | - | |
| APPROVED | SCALE: NTS | SHEET 1 OF 1 | |