

SPECIFICATION FOR APPROVAL

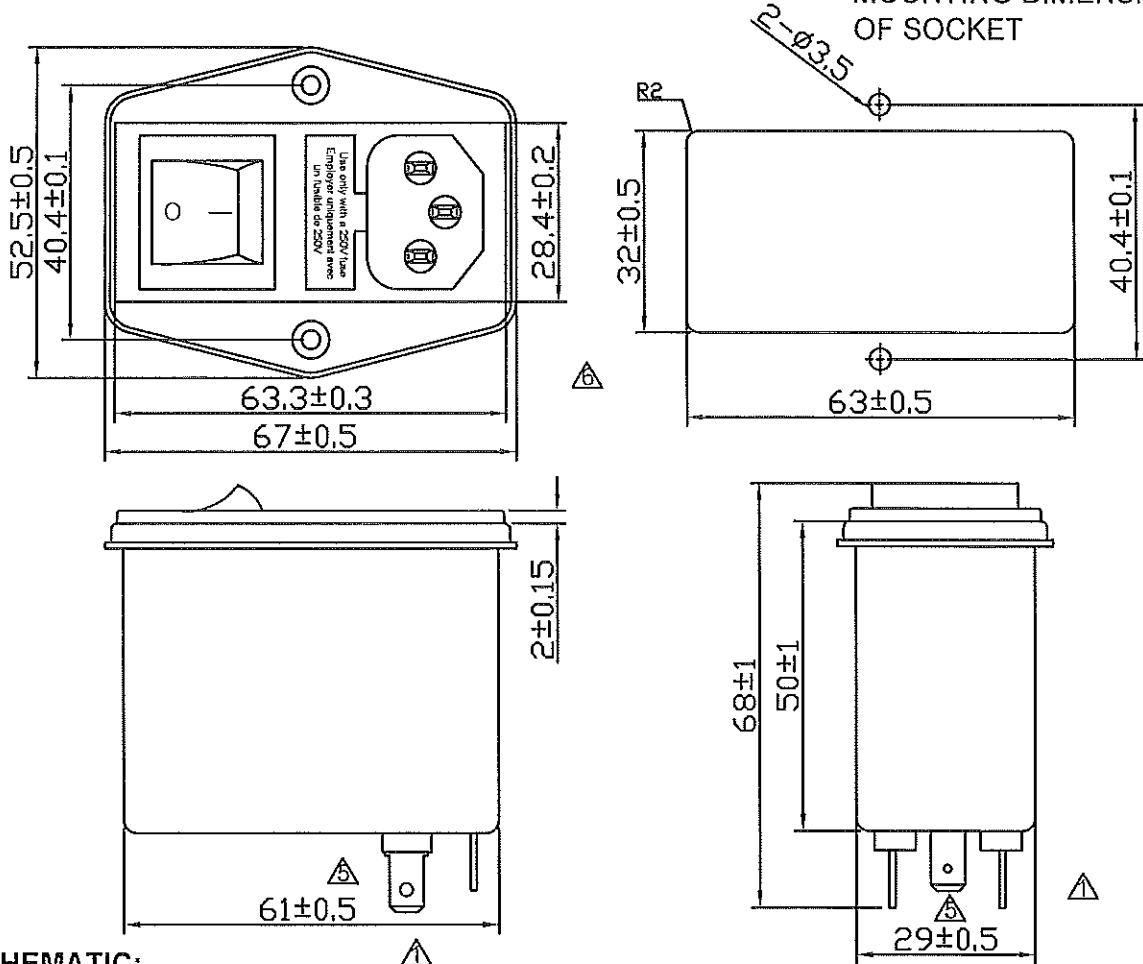
TO:

2/1

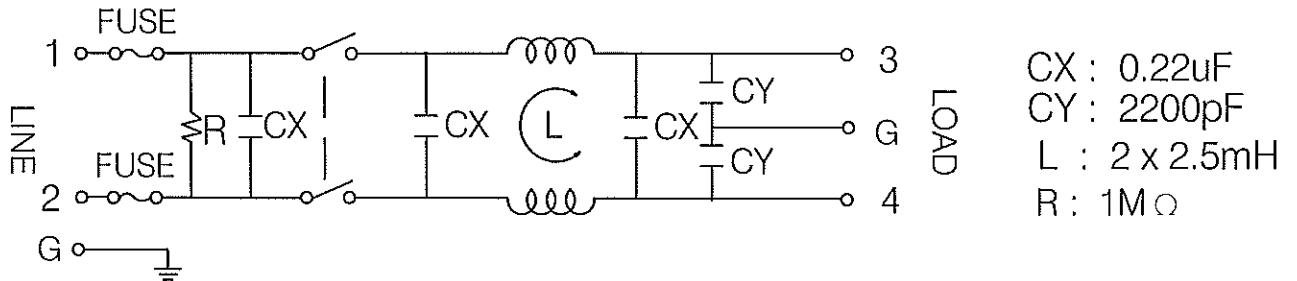
PART NAME	EMI FILTER		
TYPE	FYQ04A1	SAMPLE DATE	MAY.8.2012
MODEL NO			


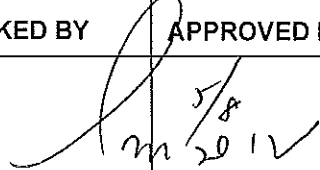
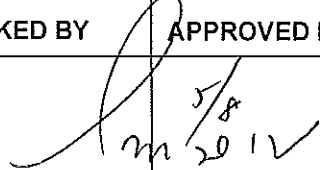
1. PHYSICAL DIMENSIONS:(mm)

SUGGESTED CUTOUT MOUNTING DIMENSIONS OF SOCKET



2.SCHEMATIC:



REPORTED BY	CHECKED BY	APPROVED BY	3	VDE號碼更正40006617
			2	增安規CE
			REV. 1	更改端子

SPECIFICATION FOR APPROVAL

TO:

2/2


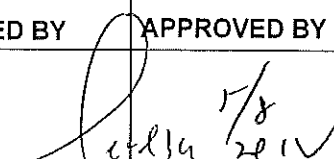
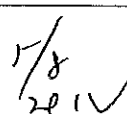
PART NAME	EMI FILTER		
TYPE	FYQ04A1	SAMPLE DATE	MAY.8.2012
MODEL NO			

3.ELECTRICAL CHARACTERISTICS:

- 3-1.RATED VOLTAGE 125/250VAC
- 3-2.RATED CURRENT 4 A
- 3-3.OPERATING FREQUENCY 50/60Hz
- 3-4.LEAKAGE CURRENT:EACHLINE TO GROUND
250VAC 50Hz 0.6mA MAX
- 3-5.HIPOT RATING:(FOR ONE MINUTE)
LINE TO LINE 1450VDC
LINE TO GROUND 2250VDC
- 3-6.INSULATION RESISTANCE 250VDC/100MOHM MIN
- 3-7.DIRECT CURRENT RESISTANCE 0.2OHM MAX
- 3-8.OPERATING TEMPERATURE -25 TO +100°C

4.SAFETY COMPLINCE:

△ VDE FILE NO:40006617 △
CE

REPORTED BY	CHECKED BY	APPROVED BY	6	插座變更為奇立插座
 5/8		 5/8 2012	5	端子孔橢圓形更正圓形
			REV. 4	更正線路圖