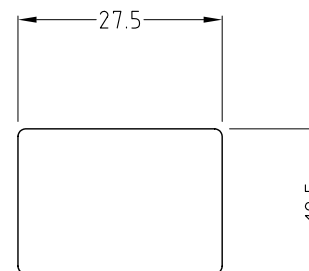
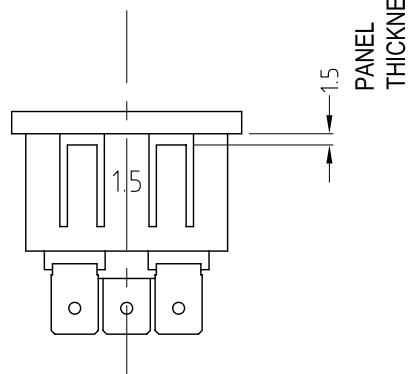
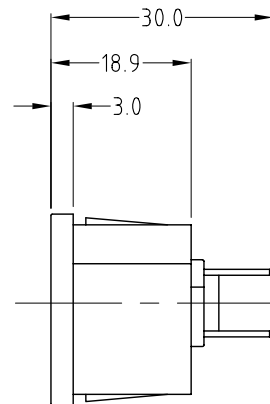
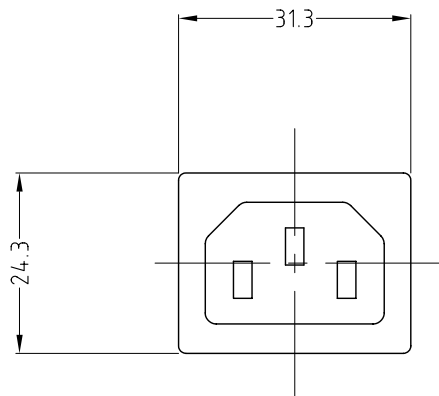


ISS.	AMEND	DATE
1	1st DRAWN	21/07/09



PANEL CUT-OUT

STANDARD: IEC 60320 C14
 APPROVED: UL, S, D, N, FI, CCC, VDE
 RATED: 10A 250V AC / 15A 250V AC
 INSULATION RESISTANCE: 100MΩ 500V DC / 1 minute.
 DIELECTRIC STRENGTH: 2000V AC / 1 minute.

RoHS
 COMPLIANT

Tolerance
 NO DEC. PLACE ±
 1 DEC. PLACE ±
 2 DEC. PLACE ±
 DIA. HOLES ±
 ANGLES ± 1/2°
 UNLESS OTHERWISE STATED

R-301SN(03)

WHERE USED F.R.
 SCALE N.T.S.

DIMENSIONS IN MILLIMETERS UNLESS OTHERWISE STATED. WORK TO DIMENSIONS. DO NOT SCALE DRAWING. 3rd ANGLE PROJECTION. REMOVE BURRS. IF IN DOUBT ASK.

Cliff Electronic Components Limited
 76 Holmethorpe Ave., Holmethorpe Ind. Estate,
 Redhill, Surrey. RH1 2PF. England.
 Tel: 01737-771375 Fax: 01737-766012

MATERIAL	THERMOPLASTIC / BRASS
FINISH	AS MOULDED / TIN PLATED
DRAWN	N.J.B.
APPD.	D.P.J.

TITLE	MAINS INLET MS1 SNAP-IN, 1.5mm PANEL, 6.3mm FASTON	
DRWG. No.	CL19192RB	FORM: A4DRWGH