

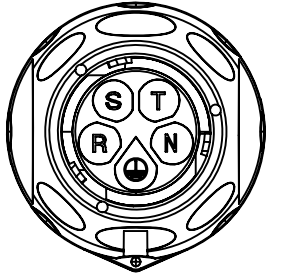
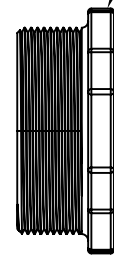
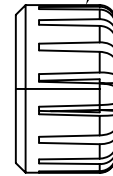
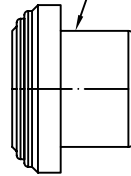
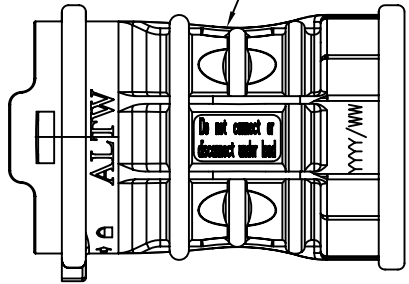
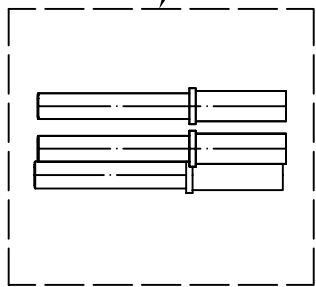
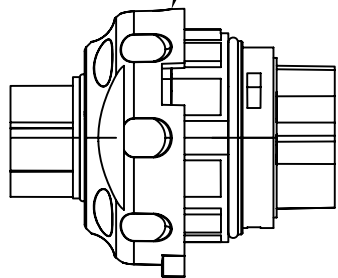


5	6	7	8
REV.	ECN NO.	DATE	SIGN

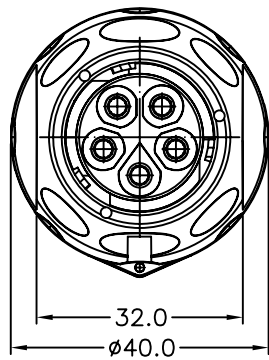
- ① F Housing
- ② O-Ring\*2
- ③ O-Ring
- ④ Nut
- ⑤ Ins\_Housing

- ⑥ F\_Pin
- ⑦ Built-In Spring
- ⑧ PE Bag (HPE00910085)

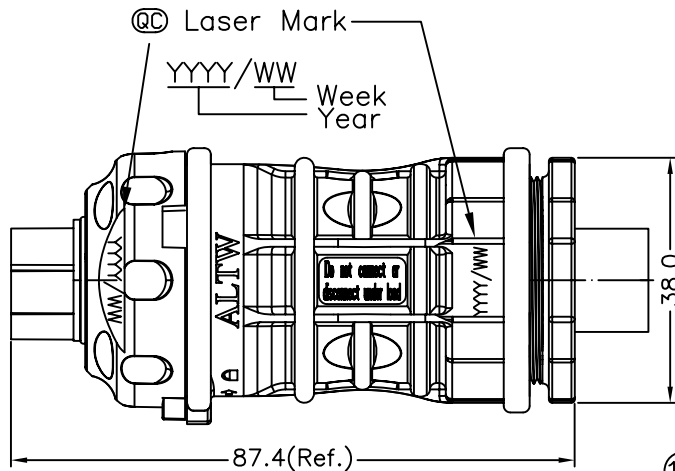
- ⑩ Seal(16MM)
- ⑪ Clamp Ring (16MM)
- ⑫ Clamp Nut (16MM)



Pin Assignments  
Front View



Conn.



Note:

- \* ㊟ Important Dimensions To Check.(重點檢查尺寸)
- \* Voltage (電壓) : AC 660V ; DC 1000V
- \* Current (電流) : 25A
- \* Please refer to manual for Ass'y instruction (使用方式請參閱組裝說明書)
- \* Standard (認證) : ULXXXXX ; CSAXXXX ; TUVXXXXX
- \* Waterproof Rate (防水等級) : IP68\_3M6H (Mating 對接)
- \* Female Housing (母膠芯) : m-PPE(F1), Black (黑)
- \* Female Pin (母端子) : Copper (銅), Tin Plated (鍍錫)
- \* O-ring (O型環) : Silicone (矽樹脂), Gray (灰)
- \* Cable OD range (線材範圍) : 16mm~13mm
- \* Wire Size (導體尺寸) : 12AWG
- \* Flame Class (防火等級) : UL94V-0
- ⑬ \* One Set Unassembled in one PE Bag.
- ⑭ \* One Set Ass'y Instructions & Tool in one PE Bag. (每包袋子中含有未組裝零件, 組裝說明書及工具)

UNIT:mm	
TOLERANCE	
.X	±0.25
.XX	±0.1
.XXX	±0.05
ANGLES	±1°

TITLE PV Connector 5Pin Cable(16MM)	
SCALE Free	SHEET 1 OF 1
REV. A	SIZE A4
㊟ : Inspection Item	

**Amphenol LTW**  
安費諾亮泰企業股份有限公司

ITEM NO LTWPWH-05BFFC-LL8001
DWG NO LTWPWH-05BFFC-LL8001
CUSTOMER

DRAWN BY Micky	DATE 2011/06/13
CHECKED BY Kevin	DATE 2011/06/13
APPROVED BY Victor	DATE 2011/06/13

THIS DOCUMENT IS SUBJECT TO CHANGE WITHOUT NOTICE. IT IS CONFIDENTIAL AND A PROPERTY OF Amphenol LTW. DISCLOSED TO THIRD PARTY HAS TO BE AUTHORIZED BY Amphenol LTW.