



POKE HOME - THRU WIRE
(CONNECTS PAIRS OF WIRES)

00-9286-00X-021-X06

PREFIX

CODE	TYPE	DETAILS
00	POKE HOME	WIRE TO WIRE

SERIES

NO. OF WAYS

CODE	NO. OF WAYS	DETAILS
001	1	SHEET 2
002	2	SHEET 3
003	3	SHEET 4
004	4	SHEET 5
006	6	SHEET 6
008	8	SHEET 7

WIRE SIZE

CODE	WIRE GAUGE	MAX. CONDUCTOR	MAX. INSULATION
021	18 TO 26 AWG	1.05mm DIAMETER	2.10mm DIAMETER

COLOUR AND APPROVAL

CODE	COLOUR	AVAILABILITY
9	WHITE	STANDARD - UL APPROVED

AVX CONFIDENTIAL PROPRIETARY
The document on this print and information therewith are
PROPRIETARY to AVX and shall not be copied or disclosed
in whole or in part without AVX's written consent.

PLATING OPTION

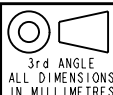
CODE	CONTACTS
06	TIN ALL OVER



SHEET 1 OF 9

FORM-106-01-056-6 ISS 8

Release No.	History
102717	19.04.2011
28.04.2011	06.09.2011
01.11.2011	11.11.2011
30.11.2011	08.02.2012
20.06.2012	102967
01.03.2013	103021
20.08.2013	

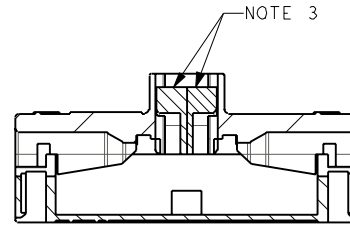
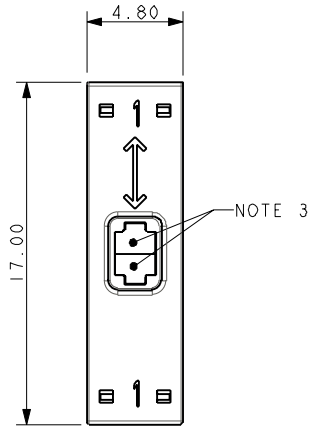


Drawn	N.C.H.
Size	CV

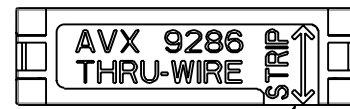
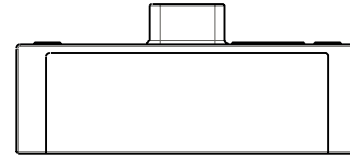
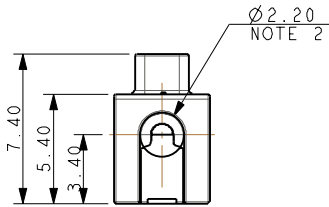
Description	Part Number
POKE HOME CONNECTOR - THRU WIRE	00-9286-01_000S

DATE	14-Feb-11
Issue	3

POKE HOME 1 WAY - THRU WIRE - 18AWG TO 26AWG



SECTION ON A-A



NOTE 8

AVX CONFIDENTIAL PROPRIETARY
 The document on this print and information therewith are PROPRIETARY to AVX and shall not be copied or disclosed in whole or in part without AVX's written consent.

PACKING DETAILS

PACK 400 PIECES IN A CLEAR PLASTIG BAG.

NOTES :-

1. 1 WAY WIRE TO WIRE "POKE HOME" CONNECTOR, BUTTON OPERATED.
2. WIRE SIZES 18-26AWG, MAXIMUM INSULATION DIAMETER 2.10mm.
3. SPLIT BUTTON ALLOWS THE WIRES TO BE INSERTED/WITHDRAWN INDEPENDENTLY.
4. INSULATION MATERIAL :- NYLON 46, GLASS FILLED, UL94 V-0, COLOUR SEE SHEET 1.
5. CONTACT MATERIAL :- TIN PLATED COPPER ALLOY.
6. FOR FULL SPECIFICATION REFER TO ELCO SPECIFICATION 201-01-132.
7. FOR APPLICATION NOTES REFER TO ELCO SPECIFICATION 201-01-135.
8. GENERAL TOLERANCE ± 0.20 mm.
9. WIRE STRIP LENGTH GUIDE, SEE SHEET 8.
10. ADHESIVE STRIP FOR PANEL MOUNTING, REFER TO SHEET 9.
10. FOR UL PRODUCT CODES UL REFERENCE E90723 (US AND CANADA).

SHEET 2 OF 9

FORM-106-01-056-6 ISS 8

Release No.	102717
History	19.04.2011 28.04.2011 06.09.2011 01.11.2011 11.11.2011 30.11.2011 08.02.2012 20.06.2012 102967 01.03.2013 103021 20.08.2013



Drawn	N.C.H.
Size	CV

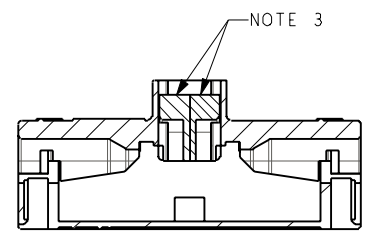
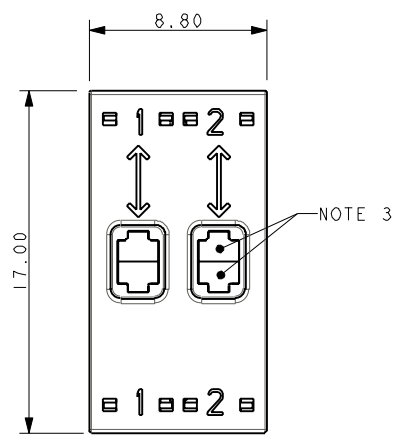
Description	POKE HOME CONNECTOR - THRU WIRE
Part Number	00-9286-01_000S

DATE	09-Feb-11
Issue	3

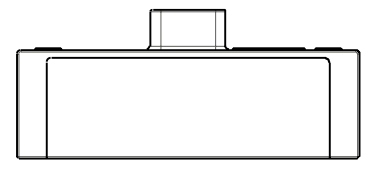
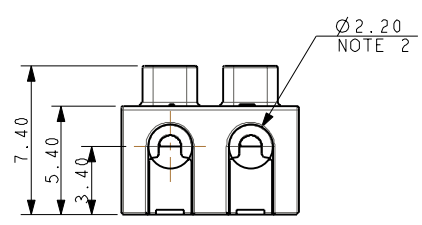
A

B

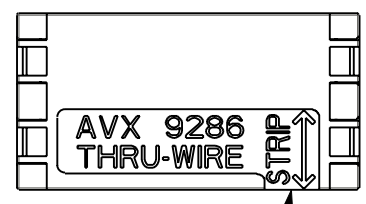
POKE HOME 2 WAY - THRU WIRE - 18AWG TO 26AWG



SECTION ON A-A



AVX CONFIDENTIAL PROPRIETARY
 The document on this print and information therewith are PROPRIETARY to AVX and shall not be copied or disclosed in whole or in part without AVX's written consent.



NOTE 8

PACKING DETAILS

PACK 400 PIECES IN A CLEAR PLASTIG BAG.

- NOTES :-
- 2 WAY WIRE TO WIRE "POKE HOME" CONNECTOR, BUTTON OPERATED.
 - WIRE SIZES 18-26AWG, MAXIMUM INSULATION DIAMETER 2.10mm.
 - SPLIT BUTTON ALLOWS THE WIRES TO BE INSERTED/WITHDRAWN INDEPENDENTLY.
 - INSULATION MATERIAL :- NYLON 46, GLASS FILLED, UL94 V-0, COLOUR SEE SHEET 1.
 - CONTACT MATERIAL :- TIN PLATED COPPER ALLOY.
 - FOR FULL SPECIFICATION REFER TO ELCO SPECIFICATION 201-01-132.
 - FOR APPLICATION NOTES REFER TO ELCO SPECIFICATION 201-01-135.
 - GENERAL TOLERANCE ± 0.20 mm.
 - WIRE STRIP LENGTH GUIDE, SEE SHEET 8.
 - ADHESIVE STRIP FOR PANEL MOUNTING, REFER TO SHEET 9.
 - FOR UL PRODUCT CODES UL REFERENCE E90723 (US AND CANADA).

FORM-106-01-056-6 ISS 8

Release No.	102717
History	19.04.2011
	28.04.2011
	06.09.2011
	01.11.2011
	11.11.2011
	30.11.2011
	08.02.2012
	20.06.2012
	102967
	01.03.2013
	103021
	20.08.2013



AVX
 © COPYRIGHT AVX
 NOT TO BE DISCLOSED OR COPIED
 WITHOUT WRITTEN PERMISSION

Drawn	N.C.H.
Size	CV

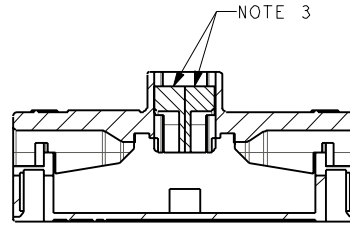
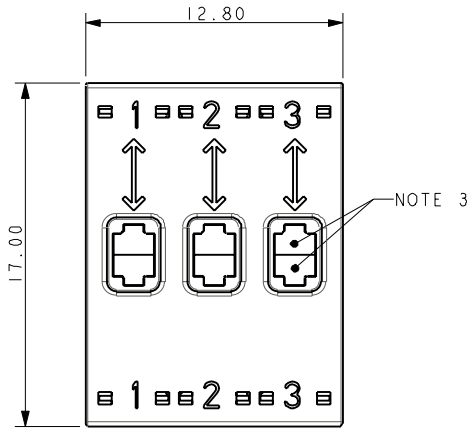
Description	POKE HOME CONNECTOR - THRU WIRE
Part Number	00-9286-01_000S

DATE	09-Feb-11
Issue	3

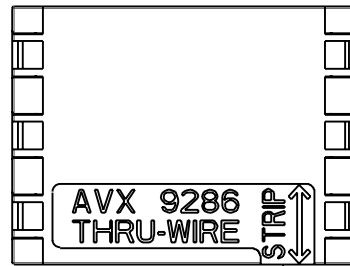
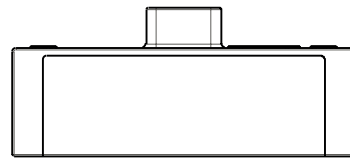
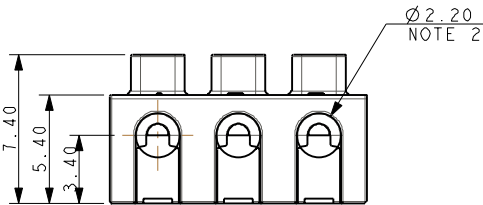
A

B

POKE HOME 3 WAY - THRU WIRE - 18AWG TO 26AWG



SECTION ON A-A



NOTE 8

AVX CONFIDENTIAL PROPRIETARY
 The document on this print and information therewith are PROPRIETARY to AVX and shall not be copied or disclosed in whole or in part without AVX's written consent.

PACKING DETAILS

PACK 400 PIECES IN A CLEAR PLASTIG BAG.

NOTES :-

1. 3 WAY WIRE TO WIRE "POKE HOME" CONNECTOR, BUTTON OPERATED.
2. WIRE SIZES 18-26AWG, MAXIMUM INSULATION DIAMETER 2.10mm.
3. SPLIT BUTTON ALLOWS THE WIRES TO BE INSERTED/WITHDRAWN INDEPENDENTLY.
4. INSULATION MATERIAL :- NYLON 46, GLASS FILLED, UL94 V-0, COLOUR SEE SHEET 1.
5. CONTACT MATERIAL :- TIN PLATED COPPER ALLOY.
6. FOR FULL SPECIFICATION REFER TO ELCO SPECIFICATION 201-01-132. FOR APPLICATION NOTES REFER TO ELCO SPECIFICATION 201-01-135.
7. GENERAL TOLERANCE ± 0.20 mm.
8. WIRE STRIP LENGTH GUIDE, SEE SHEET 8.
9. ADHESIVE STRIP FOR PANEL MOUNTING, REFER TO SHEET 9.
10. FOR UL PRODUCT CODES UL REFERENCE E90723 (US AND CANADA).

SHEET 4 OF 9

FORM-106-01-056-6 ISS 8

Release No.	102717
History	19.04.2011 28.04.2011 06.09.2011 01.11.2011 11.11.2011 30.11.2011 08.02.2012 20.06.2012 102967 01.03.2013 103021 20.08.2013



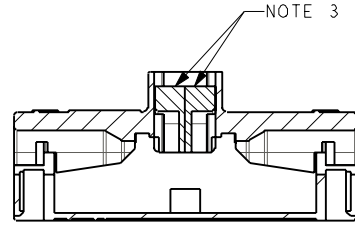
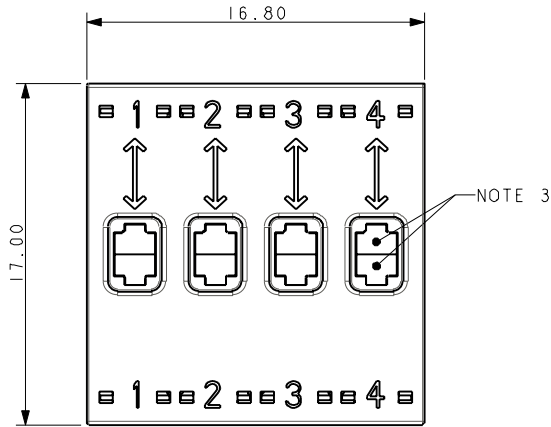
AVX
 © COPYRIGHT AVX
 NOT TO BE DISCLOSED OR COPIED
 WITHOUT WRITTEN PERMISSION

Drawn	N.C.H.
Size	CV

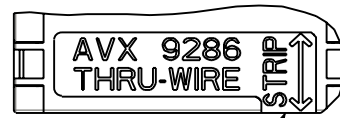
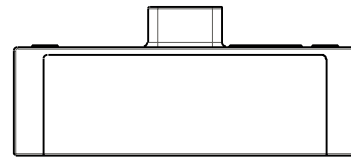
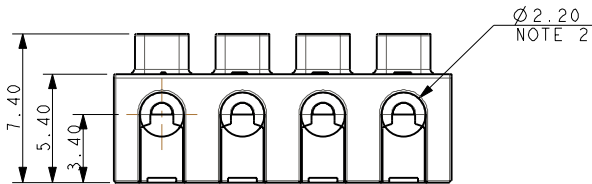
Description	POKE HOME CONNECTOR - THRU WIRE
Part Number	00-9286-01_000S

DATE	09-Feb-11
Issue	3

POKE HOME 4 WAY - THRU WIRE - 18AWG TO 26AWG



SECTION ON A-A



NOTE 8

AVX CONFIDENTIAL PROPRIETARY
 The document on this print and information therewith are PROPRIETARY to AVX and shall not be copied or disclosed in whole or in part without AVX's written consent.

PACKING DETAILS

PACK 400 PIECES IN A CLEAR PLASTIG BAG.

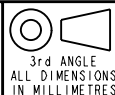
NOTES :-

1. 4 WAY WIRE TO WIRE "POKE HOME" CONNECTOR, BUTTON OPERATED.
2. WIRE SIZES 18-26AWG, MAXIMUM INSULATION DIAMETER 2.10mm.
3. SPLIT BUTTON ALLOWS THE WIRES TO BE INSERTED/WITHDRAWN INDEPENDENTLY.
4. INSULATION MATERIAL :- NYLON 46, GLASS FILLED, UL94 V-0, COLOUR SEE SHEET 1.
5. CONTACT MATERIAL :- TIN PLATED COPPER ALLOY.
6. FOR FULL SPECIFICATION REFER TO ELCO SPECIFICATION 201-01-132.
FOR APPLICATION NOTES REFER TO ELCO SPECIFICATION 201-01-135.
7. GENERAL TOLERANCE ±0.20mm.
8. WIRE STRIP LENGTH GUIDE, SEE SHEET 8.
9. ADHESIVE STRIP FOR PANEL MOUNTING, REFER TO SHEET 9.
10. FOR UL PRODUCT CODES UL REFERENCE E90723 (US AND CANADA).

SHEET 5 OF 9

FORM-106-01-056-6 ISS 8

Release No.	102717
History	19.04.2011 28.04.2011 06.09.2011 01.11.2011 11.11.2011 30.11.2011 08.02.2012 20.06.2012 102967 01.03.2013 103021 20.08.2013



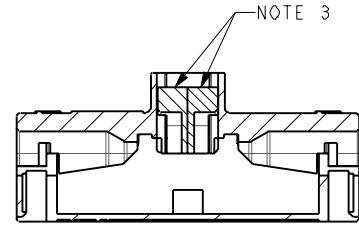
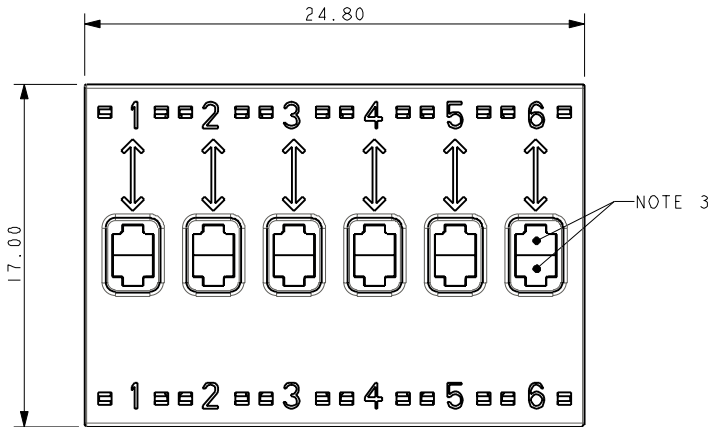
Drawn	N.C.H.	Description	POKE HOME CONNECTOR - THRU WIRE	DATE	09-Feb-11
Size	CV	Part Number	00-9286-01_000S	Issue	3

A

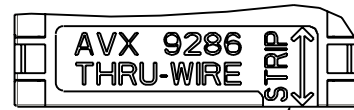
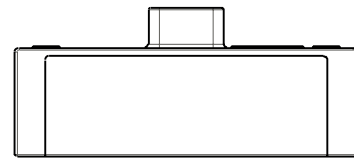
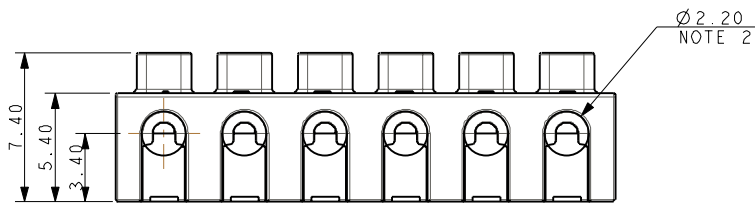
B

A | B

POKE HOME 6 WAY - THRU WIRE - 18AWG TO 26AWG



SECTION ON A-A



NOTE 8

AVX CONFIDENTIAL PROPRIETARY
 The document on this print and information therewith are
PROPRIETARY to AVX and shall not be copied or disclosed
 in whole or in part without AVX's written consent.

PACKING DETAILS

PACK 400 PIECES IN A CLEAR PLASTIG BAG.

NOTES :-

1. 6 WAY WIRE TO WIRE "POKE HOME" CONNECTOR, BUTTON OPERATED.
2. WIRE SIZES 18-26AWG, MAXIMUM INSULATION DIAMETER 2.10mm.
3. SPLIT BUTTON ALLOWS THE WIRES TO BE INSERTED/WITHDRAWN INDEPENDENTLY.
4. INSULATION MATERIAL :- NYLON 46, GLASS FILLED, UL94 V-0, COLOUR SEE SHEET 1.
5. CONTACT MATERIAL :- TIN PLATED COPPER ALLOY.
6. FOR FULL SPECIFICATION REFER TO ELCO SPECIFICATION 201-01-132.
 FOR APPLICATION NOTES REFER TO ELCO SPECIFICATION 201-01-135.
7. GENERAL TOLERANCE ±0.20mm.
8. WIRE STRIP LENGTH GUIDE, SEE SHEET 8.
9. ADHESIVE STRIP FOR PANEL MOUNTING, REFER TO SHEET 9.
10. FOR UL PRODUCT CODES UL REFERENCE E90723 (US AND CANADA).

FORM-106-01-056-6 ISS 8

Release No.	102717
History	19.04.2011 28.04.2011 06.09.2011 01.11.2011 11.11.2011 30.11.2011 08.02.2012 20.06.2012 102967 01.03.2013 103021 20.08.2013



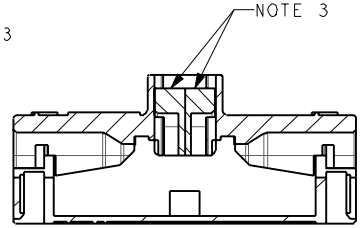
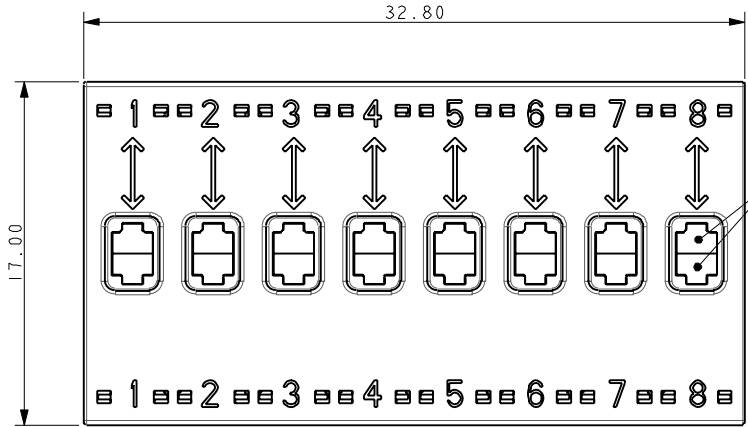
Drawn	N.C.H.	Description	POKE HOME CONNECTOR - THRU WIRE	DATE	09-Feb-11
Size	CV	Part Number	00-9286-01_000S	Issue	3

A

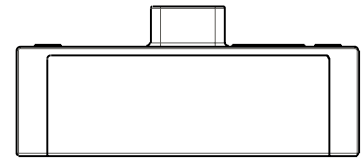
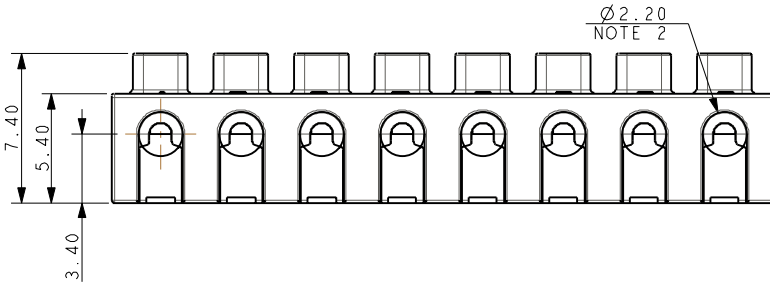
B

A | B

POKE HOME 8 WAY -THRU WIRE - 18AWG TO 26AWG



SECTION ON A-A



AVX CONFIDENTIAL PROPRIETARY
 The document on this print and information therewith are
PROPRIETARY to AVX and shall not be copied or disclosed
 in whole or in part without AVX's written consent.



NOTE 8

PACKING DETAILS

PACK 400 PIECES IN A CLEAR PLASTIG BAG.

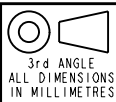
NOTES :-

1. 8 WAY WIRE TO WIRE "POKE HOME" CONNECTOR, BUTTON OPERATED.
2. WIRE SIZES 18-26AWG, MAXIMUM INSULATION DIAMETER 2.10mm.
3. SPLIT BUTTON ALLOWS THE WIRES TO BE INSERTED/WITHDRAWN INDEPENDENTLY.
4. INSULATION MATERIAL :- NYLON 46, GLASS FILLED, UL94 V-0, COLOUR SEE SHEET 1.
5. CONTACT MATERIAL :- TIN PLATED COPPER ALLOY.
6. FOR FULL SPECIFICATION REFER TO ELCO SPECIFICATION 201-01-132.
FOR APPLICATION NOTES REFER TO ELCO SPECIFICATION 201-01-135.
7. GENERAL TOLERANCE ± 0.20 mm.
8. WIRE STRIP LENGTH GUIDE, SEE SHEET 8.
9. ADHESIVE STRIP FOR PANEL MOUNTING, REFER TO SHEET 9.
10. FOR UL PRODUCT CODES UL REFERENCE E90723 (US AND CANADA).

SHEET 7 OF 9

FORM-106-01-056-6 ISS 8

Release No.	102717
History	19.04.2011 28.04.2011 06.09.2011 01.11.2011 11.11.2011 30.11.2011 08.02.2012 20.06.2012 102967 01.03.2013 103021 20.08.2013



Drawn	N.C.H.	Description	POKE HOME CONNECTOR - THRU WIRE	DATE	09-Feb-11
Size	CV	Part Number	00-9286-01_000S	Issue	3

A

B

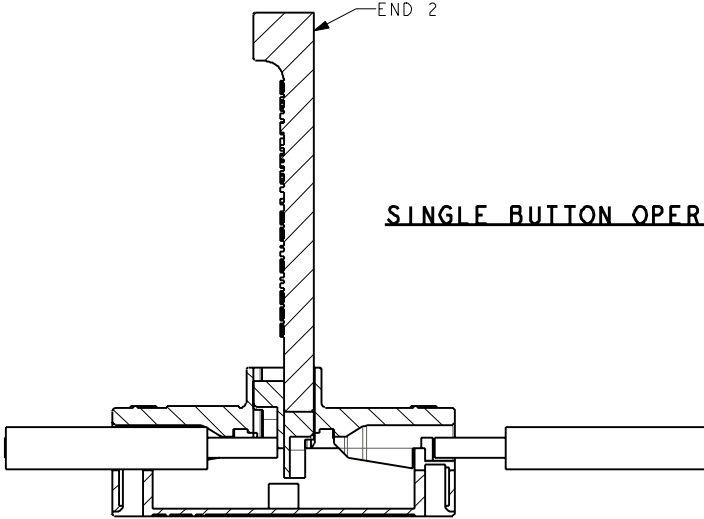
A

B

POKE HOME BUTTON ACTIVATION TOOL

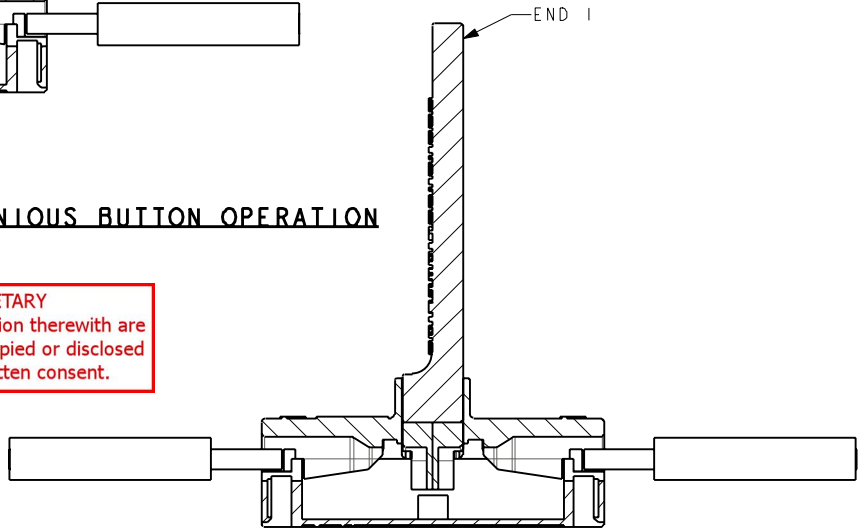


SINGLE BUTTON OPERATION



SIMULTANEOUS BUTTON OPERATION

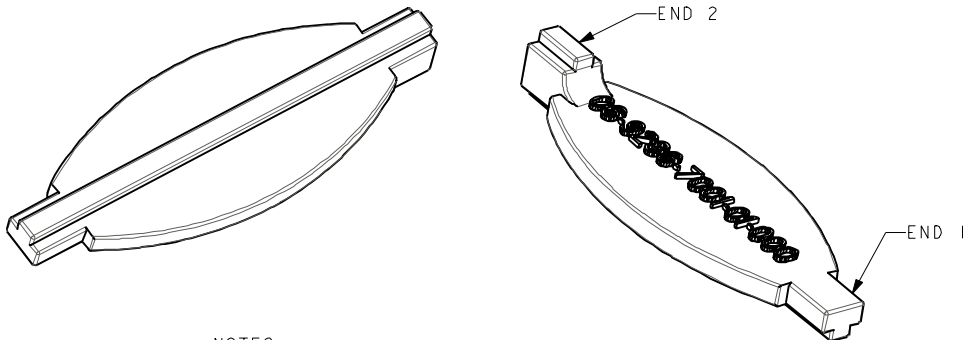
AVX CONFIDENTIAL PROPRIETARY
 The document on this print and information therewith are
 PROPRIETARY to AVX and shall not be copied or disclosed
 in whole or in part without AVX's written consent.



4.00 ± 0.50 NOTE 2

TRIMMED WIRE

**9286 BUTTON ACTIVATION TOOL
06-9286-7001-01-000**



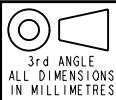
NOTES :-

1. TOOL IS DOUBLE ENDED, END 1 ACTIVATES SINGLE BUTTON, END 2 FOR SIMULTANEOUS BUTTON ACTIVATION.
2. WIRE WHEN TRIMMED TO BE STRAIGHT WITH NO BURRS.
3. FOR FULL ASSEMBLY DETAILS REFER TO APPLICATION NOTES 201-01-135.
4. SUPPLIED IN PACKS OF 100 PIECES.

SHEET 8 OF 9

FORM-106-01-056-6 ISS 8

Release No.	102717
History	19.04.2011
	28.04.2011
	06.09.2011
	01.11.2011
	11.11.2011
	30.11.2011
	08.02.2012
	20.06.2012
	102967
	01.03.2013
	103021
	20.08.2013



Drawn	N.C.H.
Size	CV

Description	POKE HOME CONNECTOR - THRU WIRE
Part Number	00-9286-01_000S

DATE	02-Mar-11
Issue	3

A

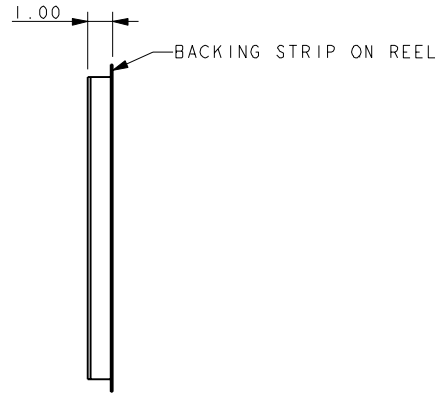
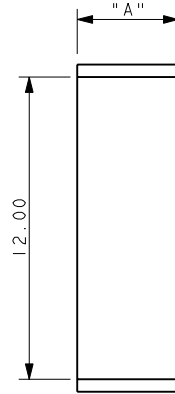
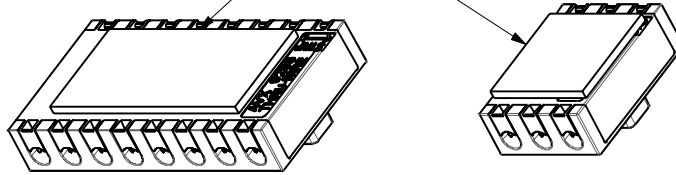
B

80-9286-400X-00-000 ADHESIVE MOUNTING TAPE
 ACCESSORY - NOT SUPPLIED WITH CONNECTORS



AVX CONFIDENTIAL PROPRIETARY
 The document on this print and information therewith are
PROPRIETARY to AVX and shall not be copied or disclosed
 in whole or in part without AVX's written consent.

TAPE APPLIED TO CENTRE OF BASE



PART NUMBER	DIMENSION "A"	MATCHING CONNECTORS	
		00-9286-00X-021-X06 THRU WIRE	00-9286-00X-121-X06 JUNCTION BOX
80-9286-4001-00-000	4.00	1 WAY	N/A
80-9286-4002-00-000	8.00	2 WAY	4 WAY
80-9286-4003-00-000	12.00	3 AND 4 WAY	6 AND 8 WAY
80-9286-4006-00-000	24.00	6 AND 8 WAY	N/A

- NOTES :-
- DOUBLE SIDED FOAM FILLED ADHESIVE TAPE.
 - WIDTH FOR 1 WAY, 2 WAY, 3 WAY AND 6 WAY CONNECTORS, FOR LENGTH SEE TABLE.
 - USED TO ADHERE A 9286 CONNECTOR TO A FLAT SURFACE.
 - SOME SURFACES MAY REQUIRE THE USE OF A CLEANING SOLVENT TO ACHIEVE BEST RESULTS.
 - SUPPLIED CUT TO SIZE ON A REEL ON AN OVERSIZE BACKING STRIP PARTS 400 PER REEL.

SHEET 9 OF 9

FORM-106-01-056-6 ISS 8

Release No. History 102717 11.11.2011 30.11.2011 08.02.2012 20.06.2012 102967 01.03.2013 103021 20.08.2013
--



Drawn N.C.H.
Size CV

Description POKE HOME CONNECTOR - THRU WIRE
Part Number 00-9286-01_000S

DATE 08-Nov-11
Issue 3

A

B