

MATERIALS AND FINISHES

BODY: BRASS
PLATED: NICKEL

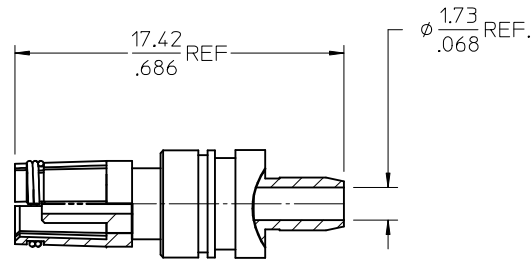
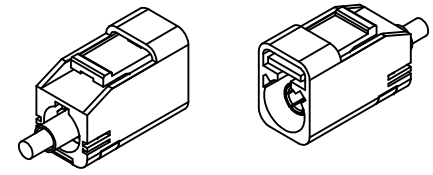
CENTER CONTACT: PHOSPOR BRONZE
PLATED: GOLD

CRIMP TUBE: BRASS
PLATED: NICKEL

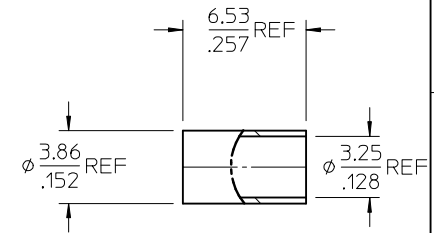
OUTER CASING: NYLON 66 OR EQUIVALENT
KEYING: SEE TABLE
COLOR: SEE TABLE

INSULATOR: PP

PACKAGING BY SINGLE BAG

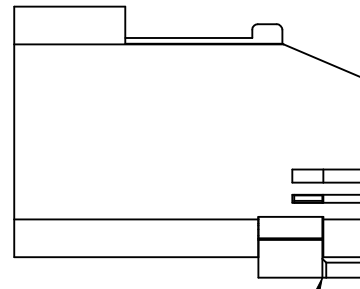
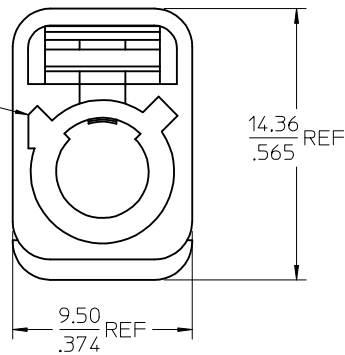


CENTER CONTACT
PART NO.: 89538-0781

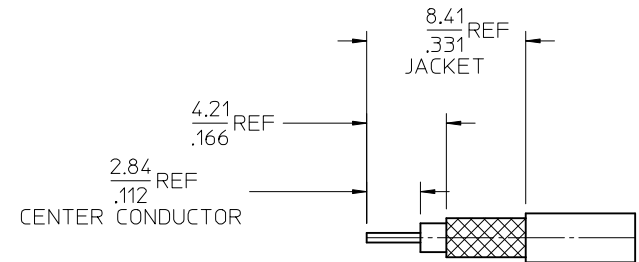


CRIMP TUBE
PART NO.: 89613-1792

FAKRA
CONNECTOR
KEYING
CODE B SHOWN



SECONDARY LOCK
(TPA)

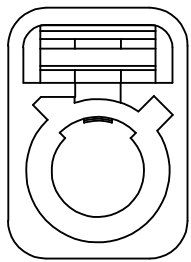


CENTER CONDUCTOR

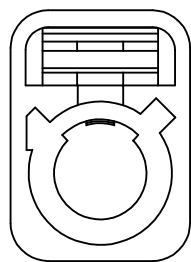
PART # SEE SHEET 2

AS-73597-045	ASSYMBLY INSTRUCTIONS
PS-89675-331	PRODUCT SPECIFICATION
DIN 72594-1	INTERFACE SPECIFICATION
SPECIFICATION	DESCRIPTION

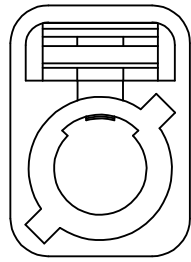
TYP EC NO: URF2014-0148 DRW: ELIN 2013/09/02 CHKD: APPR: MHUANG 2013/09/10 REV: A1	QUALITY SYMBOLS ▽=0 ▽=0 ▽=0	GENERAL TOLERANCES (UNLESS SPECIFIED) mm INCH 4 PLACES ± .005 ± .0005 3 PLACES ± .005 ± .0005 2 PLACES ± .005 ± .0005 1 PLACE ± .005 ± .0005 0 PLACE ± .005 ± .0005 ANGULAR ± 2° DRAFT WHERE APPLICABLE MUST REMAIN WITHIN DIMENSIONS	DIMENSION STYLE MM/IN DRAWN BY DATE EL IN 2012/12/05 CHECKED BY DATE KERRIE 2012/12/05 APPROVED BY DATE MHUANG 2013/07/10	SCALE 5:1 DESIGN UNITS METRIC THIRD ANGLE PROJECTION	TITLE SMB PLUG FAKRA II STR. 50 OHMS FOR RG316 FAKRA II -PC		MATERIAL NO. SEE SHEET 2	DOCUMENT NO. SD-73403-626	SHEET NO. 1 OF 3
					THIS DRAWING CONTAINS INFORMATION THAT IS PROPRIETARY TO MOLEX INCORPORATED AND SHOULD NOT BE USED WITHOUT WRITTEN PERMISSION				



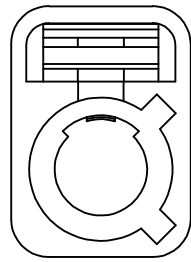
CODE A



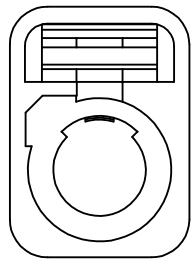
CODE B



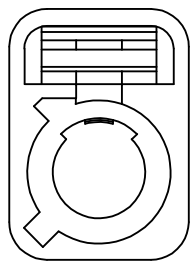
CODE C



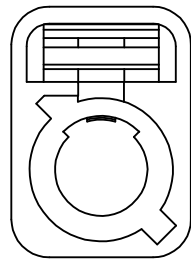
CODE D



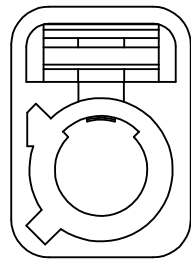
CODE E



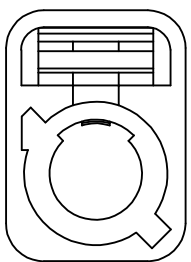
CODE F



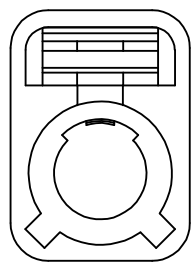
CODE G



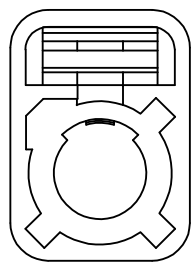
CODE H



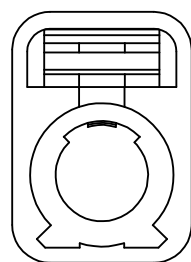
CODE I



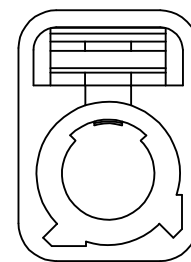
CODE K



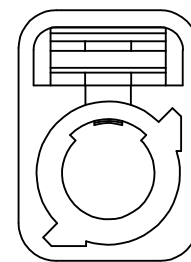
CODE Z



CODE L



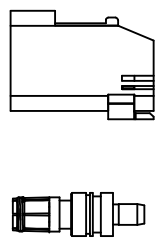
CODE M



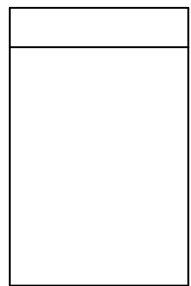
CODE N

N	PASTEL GREEN	73403-6273
M	PASTEL ORANGE	73403-6272
L	CARMINE RED	73403-6271
Z	WATER BLUE	73403-6270
K	CURRY YELLOW	73403-6269
I	BEIGE	73403-6268
H	VIOLET	73403-6267
G	GRAY	73403-6266
F	BROWN	73403-6265
E	GREEN	73403-6264
D	BORDEAUXVIOLET	73403-6263
C	BLUE	73403-6262
B	CREAM WHITE	73403-6261
A	BLACK	73403-6260
KEYING CODE	COLOR	PART NO.

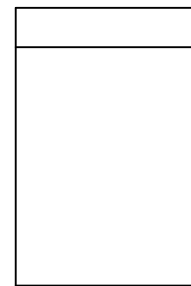
SEE SHEET 1 EC NO: URF2014-0148 DRAWN: LIN CHKD: APPR: MHUANG 2013/09/10 2013/09/10	QUALITY SYMBOLS ▽=0 ▽=0 ▽=0	GENERAL TOLERANCES (UNLESS SPECIFIED) <table border="1"> <tr> <th></th> <th>mm</th> <th>INCH</th> </tr> <tr> <td>4 PLACES</td> <td>± ---</td> <td>± ---</td> </tr> <tr> <td>3 PLACES</td> <td>± ---</td> <td>± ---</td> </tr> <tr> <td>2 PLACES</td> <td>± ---</td> <td>± ---</td> </tr> <tr> <td>1 PLACE</td> <td>± ---</td> <td>± ---</td> </tr> <tr> <td>0 PLACE</td> <td>± ---</td> <td>± ---</td> </tr> </table>		mm	INCH	4 PLACES	± ---	± ---	3 PLACES	± ---	± ---	2 PLACES	± ---	± ---	1 PLACE	± ---	± ---	0 PLACE	± ---	± ---	DIMENSION STYLE MM/IN DRAWN BY DATE EL IN 2012/12/05 CHECKED BY DATE KERRIE 2012/12/05 APPROVED BY DATE MHUANG 2013/07/10	SCALE 5:1 DESIGN UNITS METRIC THIRD ANGLE PROJECTION	TITLE SMB PLUG FAKRA II STR. 50 OHMS FOR RG316 FAKRA II -PC molex	MATERIAL NO. SEE TABLE DOCUMENT NO. SD-73403-626	SHEET NO. 2 OF 3
		mm	INCH																						
	4 PLACES	± ---	± ---																						
	3 PLACES	± ---	± ---																						
2 PLACES	± ---	± ---																							
1 PLACE	± ---	± ---																							
0 PLACE	± ---	± ---																							
DRAFT WHERE APPLICABLE MUST REMAIN WITHIN DIMENSIONS		ANGULAR ± 2 °		THIS DRAWING CONTAINS INFORMATION THAT IS PROPRIETARY TO MOLEX INCORPORATED AND SHOULD NOT BE USED WITHOUT WRITTEN PERMISSION																					
A1		SIZE C																							



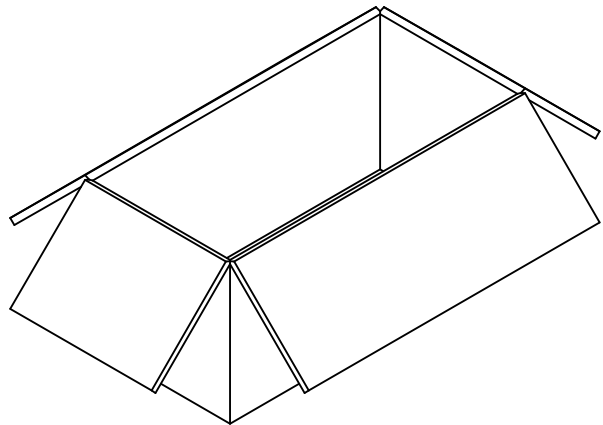
SHROUD WITH TPA x1
 CRIMP TUBE x1
 SMB SUB ASSY x1
 CENTER CONTACT x1



1 SET PER BAG
 BAG P/N: 89707-0317



50 SET PER BAG
 BAG P/N: 89707-0174
 6" x 12"



500 SET PER CARTON BOX
 P/N: 96707-0002
 367*176*188mm

SEE SHEET 1 EC NO: URF2014-0148 DRWNLIN 2013/09/02 CHKD: APPR:MHUANG 2013/09/10 REV: A1	QUALITY SYMBOLS	GENERAL TOLERANCES (UNLESS SPECIFIED)		DIMENSION STYLE		SCALE	DESIGN UNITS	THIRD ANGLE PROJECTION	
	▽=0	mm	INCH	MM/IN		1:3.33	METRIC	TITLE	
	▽=0	4 PLACES ± ---	± ---	DRAWN BY	DATE	SMB PLUG FAKRA II STR. 50 OHMS FOR RG316 FAKRA II -PC			
	▽=0	3 PLACES ± ---	± ---	EL IN	2012/12/05				
▽=0	2 PLACES ± ---	± ---	CHECKED BY	DATE	molex				
	1 PLACE ± ---	± ---	KERRIE	2012/12/05					
	0 PLACE ± ---	± ---	APPROVED BY	DATE	MATERIAL NO.		DOCUMENT NO.	SHEET NO.	
			MHUANG	2013/07/10	SEE SHEET 2		SD-73403-626	3 OF 3	
			ANGULAR ± 2 °		THIS DRAWING CONTAINS INFORMATION THAT IS PROPRIETARY TO MOLEX INCORPORATED AND SHOULD NOT BE USED WITHOUT WRITTEN PERMISSION				
			DRAFT WHERE APPLICABLE MUST REMAIN WITHIN DIMENSIONS						