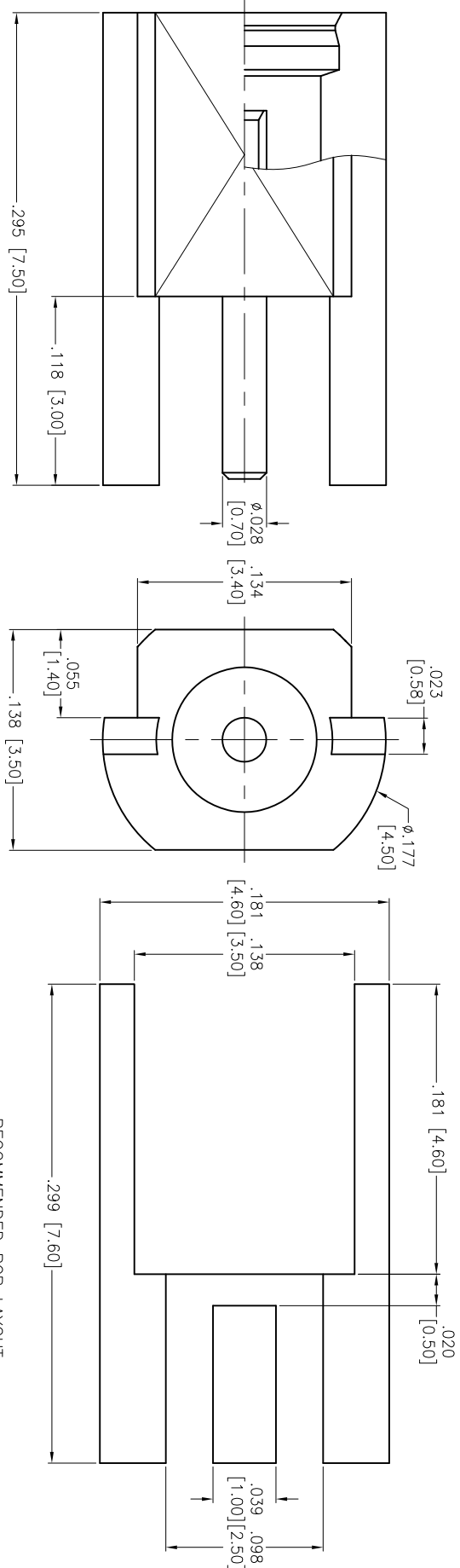


Rev	AWO #	Description	Date	Appr
-		RELEASED	8/7/15	

APPROVED: \_\_\_\_\_  
 DATE: \_\_\_\_\_ TITLE: \_\_\_\_\_



RECOMMENDED PCB LAYOUT

CONTACT PIN	BE CU	GOLD
INSULATOR	PTFE	WHITE
BODY	BRASS	GOLD
DESCRIPTION	MATERIAL	FINISH

**SPECIFICATIONS:**

**Electrical:**  
 Nominal Impedance: 50 ohms  
 Frequency range: 0-6 GHz  
 Working Voltage: 170 VOLTS Max  
 Proof Voltage: 500 VOLTS  
 Temperature Rating:  
 Operating temperature: -55°C to +155°C  
**Environmental:**  
 Lead free, RoHS compliant.

PACKAGED ON TAPE & REEL

UNLESS OTHERWISE SPECIFIED  
 ALL DIMENSIONS ARE INCHES [MM]  
 TOLERANCES: EXCEPT AS NOTED

.X	± .10	ØX	± .10
.XX	± .020	ØXXX	± .015
.XXX	± .015	ØXXXX	± .010

INCHES HOLEES

**ADAM TECH**  
 909 Railway Avenue, Union, NJ 07083  
 Phone: 908-687-5000 Fax: 908-687-5710

**RF CONNECTOR, TYPE MMCX STR.**  
**50 OHM, EDGE CARD MOUNT JACK**

DRAWN	AY	8/7/15	SIZE	PART NO.	REV.
CHECKED	SY	8/7/15	X	RF-12-05A-1-00-50-G-1/R	-
APPROVED			REF:	S00277T	SCALE: NTS

SHEET 1 OF 1



6 5 4 3 2 1

6 5 4 3 2 1