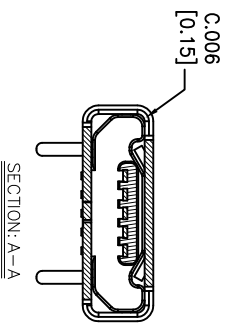
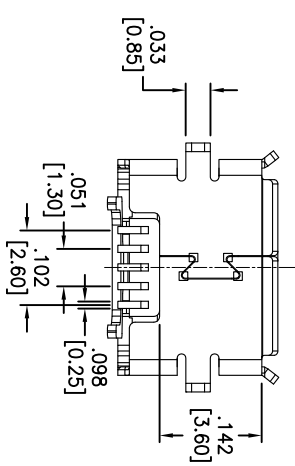
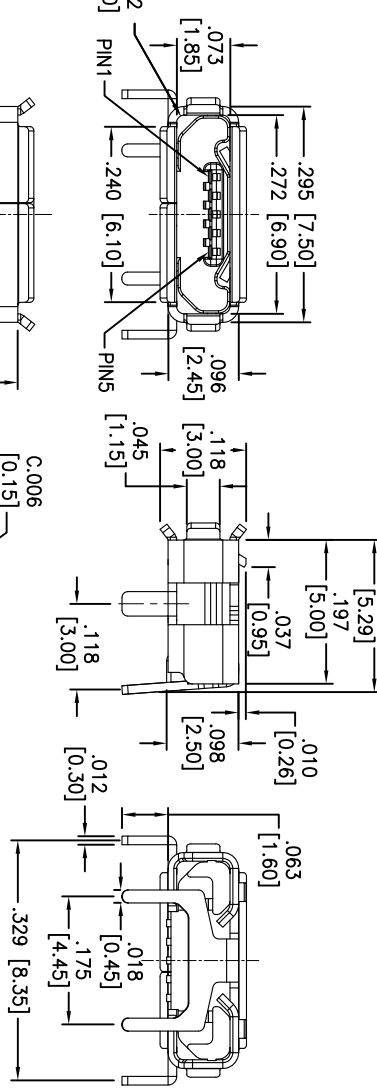
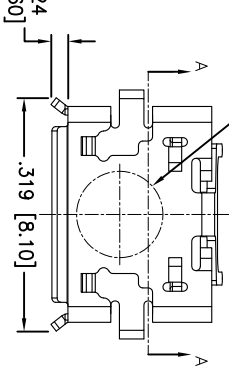
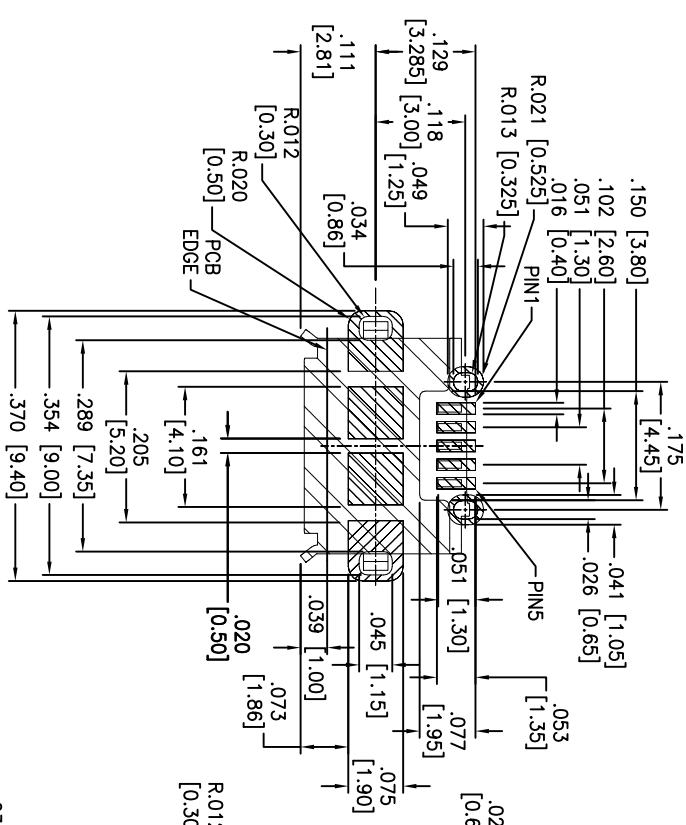


| Rev | AWO # | Description | Date | Appr |
|-----|-------|---------------|---------|------|
| - | | RELEASED | 4/16/13 | |
| A | | REVISED SHAPE | 4/18/13 | |
| B | | ADDED SHAPE | 6/18/13 | |

APPROVED: _____ TITLE: _____
 DATE: _____



RECOMMENDED PCB LAYOUT



SPECIFICATIONS:
 Material: Insulator: Hi-temp thermoplastic,, glass reinforced rated UL 94V-0
 Insulator color: Black
 Contacts: Copper Alloy
 Shell: Stainless Steel, Matte Tin plated
 Plating: Gold Flash over Nickel overall
 Electrical: Operating voltage: 250 VAC max.
 Current rating: 1 Amp max.
 Contact resistance: 30 mohms max.
 Insulation resistance: 100 Mohms min. @ 500 VDC
 Dielectric withstanding voltage: 100 VAC for 1 minute
 Temperature Rating: Operating temperature: -30°C to +80°C
 Environmental: Lead free, ROHS compliant.

PACKAGED ON TAPE & REEL

ADAM TECH
 909 Railway Avenue, Union, NJ 07083
 Phone: 908-687-5000 Fax: 908-687-5710

| UNLESS OTHERWISE SPECIFIED ALL DIMENSIONS ARE INCHES [MM] | | TOLERANCES: EXCEPT AS NOTED | | HOLES | |
|---|--------|-----------------------------|---------|-------|--------------------------|
| X | ± .10 | ØX | ± .10 | | |
| .XX | ± .020 | ØXX | ± .015 | | |
| .XXX | ± .015 | ØXXX | ± .010 | | |
| APPROVALS | | | | | |
| DRAWN | AY | DATE | 4/16/13 | SIZE | PART NO. |
| CHECKED | CC | DATE | 4/16/13 | X | MCR-AB1-S-RA-SMT-CS1-T/R |
| APPROVED | | DATE | | REF: | S00073C |
| | | | SCALE: | NTS | SHEET 1 OF 1 |