



Cat.6 Patch Panel, 12-Port, Shielded

Part no.: NP0017

Technical Features

Cat. 6 Class E, ISO/IEC 11801 & EN50173

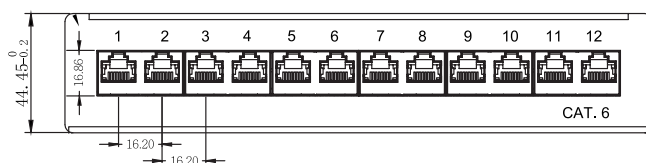
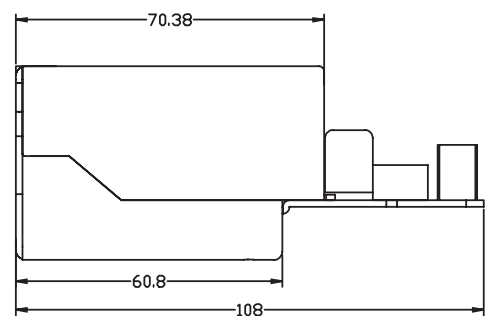
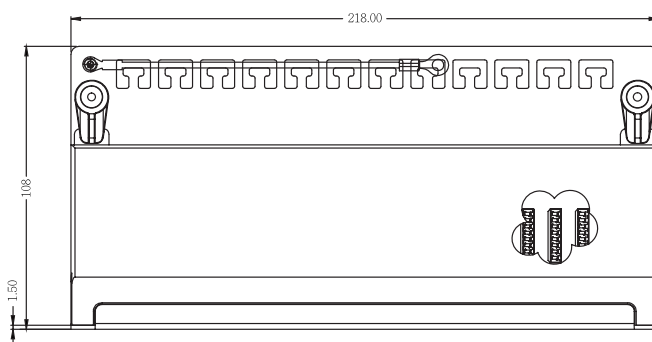
12 shielded RJ45 ports with gold flash contact

Desktop Patch Panel

Metal Chassis

Color: RAL9005 Black

Technical Drawings



NP0017



4 052792 041415

Made in China

www.logilink.de



RoHS
compliant



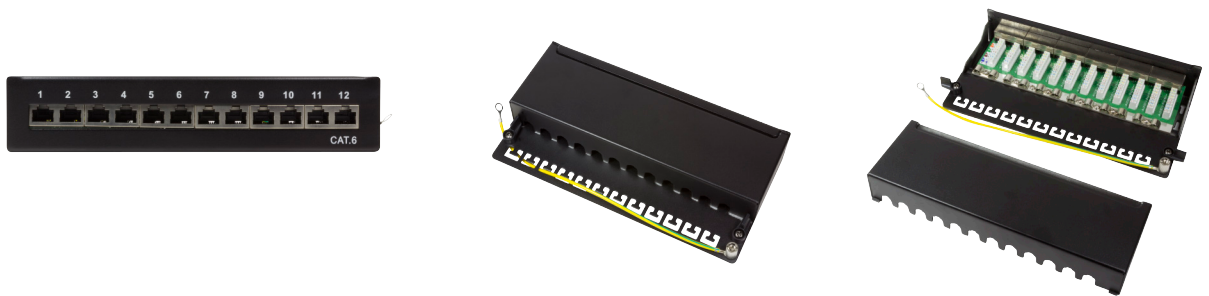
* The specifications and pictures are subject to change without notice.
*All trade names referenced are the registered trademark of their respective owners.

Package Contents

Cat.6 Patch Panel x 1

Packaging Informations

Packing Dimension	275 x 135 x 55mm
Packing Weight	0.85kg
Carton Dimension	570 x 290 x 290mm
Carton Q'ty	20pcs
Carton Weight	17.7kg



NP0017



4 052792 041415

Made in China

www.logilink.de



RoHS
compliant



* The specifications and pictures are subject to change without notice.
*All trade names referenced are the registered namework of their respective owners.