

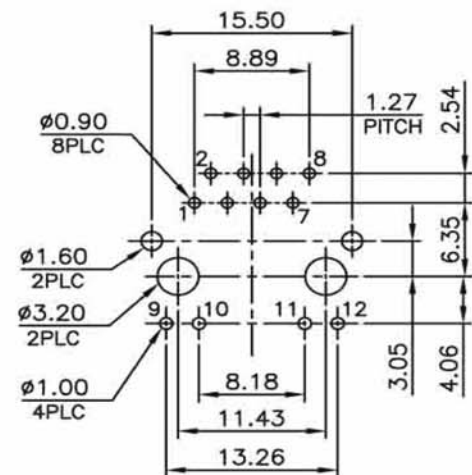
NOTE:
CAVITY CONFIRMS TO FCC RULES AND REGULATIONS PART 68, SUBPART F.

1. MATERIAL:

- 1.1 HOUSING: PA46, WITH GLASS FIBER, UL94V-0, STANDARD COLOR-BLACK.
- 1.2 INSERT HOUSING: PA46, WITH GLASS FIBER, UL94V-0, STANDARD COLOR-BLACK.
- 1.3 CONTACTS: PHOSPHOR BRONZE.
- 1.4 SHELL: BRASS.
- 1.5 LED SOLDER TAIL: STEEL.

2. FINISH:

- 2.1 CONTACTS: GOLD PLATED ON CONTACT AREA, GOLD FLASH ON SOLDER TAIL, 1.27µm [50µ"] MIN. NICKEL UNDERPLATED OVERALL.
- 2.2 SHELL: 0.508µm [20µ"] MIN. NICKEL PLATED.
- 2.3 LED SOLDER TAIL: 2.032µm [80µ"] MIN. TIN PLATED.



RECOMMENDED PCB LAYOUT
PCB THICKNESS: 1.6mm
TOLERANCE: ±0.05mm (TOP VIEW)

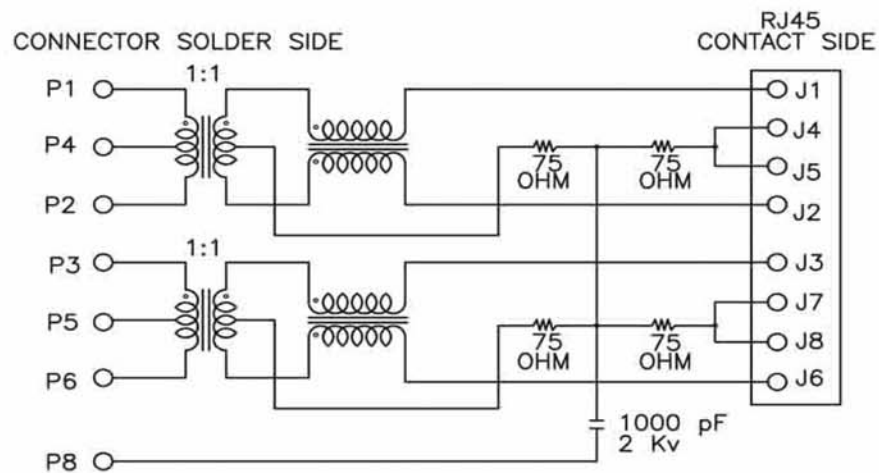


| TOLERANCE (mm) | APPROVALS | DATE | TITLE | Amphenol Amphenol European Design Center | |
|----------------------------|-------------------|-------------|---------------------------------------|--|---------------------|
| X.X +/-0.30 | DRAWN Stephane | 05/Mar/2018 | Transformer RJ45 Dip Side Entry w/LED | Scale N.A. | Sheet 1 of 2 |
| X.XX +/-0.20 | CHECKED Rob | 05/Mar/2018 | | | |
| X.XXX +/-0.10 | APPROVED Rob | 05/Mar/2018 | | | |
| Angle +/-3° | | | | | |
| UNLESS OTHERWISE SPECIFIED | | UNIT: mm | SIZE: A4 | Drawing No | LMJ199882X130DL1TOJ |
| | | | | | REV. C |

ELECTRICAL CHARACTERISTICS

TEST NOTES: (25±5°C)

| Item | Parameter | Condition | Min. | Typ. | Max. | Unit | REMARK |
|------|--|--------------|------|------|------|------|--------|
| 1 | Insertion loss | 1-100 MHz | | | -1 | dB | |
| 2 | Return loss | 1-30 MHz | -20 | | | dB | |
| | | 30-60 MHz | -15 | | | dB | |
| | | 60-80 MHz | -11 | | | dB | |
| 3 | Primary Inductance @100KHz, 0.1Vrms, 8mA DC BIAS | (1-2), (3-6) | 350 | | | uH | |
| 4 | Crosstalk | 1-100 MHz | -30 | | | dB | |
| 5 | Hipot | Vrms | 1.5 | | | kV | |



CONNECTOR SCHEMATIC

Ordering Information

LMJ199882X130DL1TOJ

a

- a: Contact plating
- 1: 15u"gold
- 2: 30u"gold
- 3: 50u"gold
- 4: 6u"gold



| | | | | | | | |
|----------------------------|-------------------|-------------|--|--|-----------|------------|--------------|
| TOLERANCE (mm) | APPROVALS | DATE | TITLE Transformer RJ45 Dip Side Entry w/LED | Amphenol Amphenol European Design Center | | | |
| | DRAWN Stephane | 05/Mar/2018 | | | | Scale N.A. | Sheet 2 of 2 |
| | CHECKED Rob | 05/Mar/2018 | | | | | |
| | APPROVED Rob | 05/Mar/2018 | | | | | |
| UNLESS OTHERWISE SPECIFIED | UNIT: mm | SIZE: A4 | Drawing No | LMJ199882X130DL1TOJ | REV. C | | |