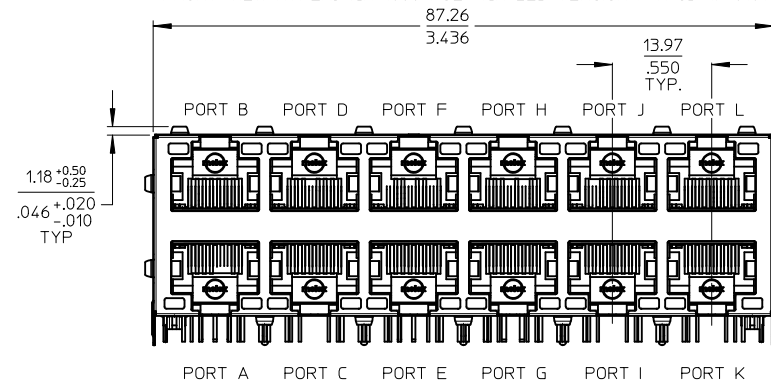
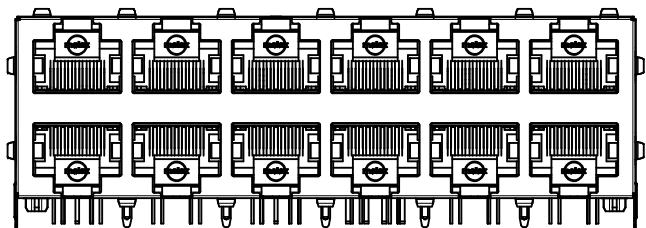


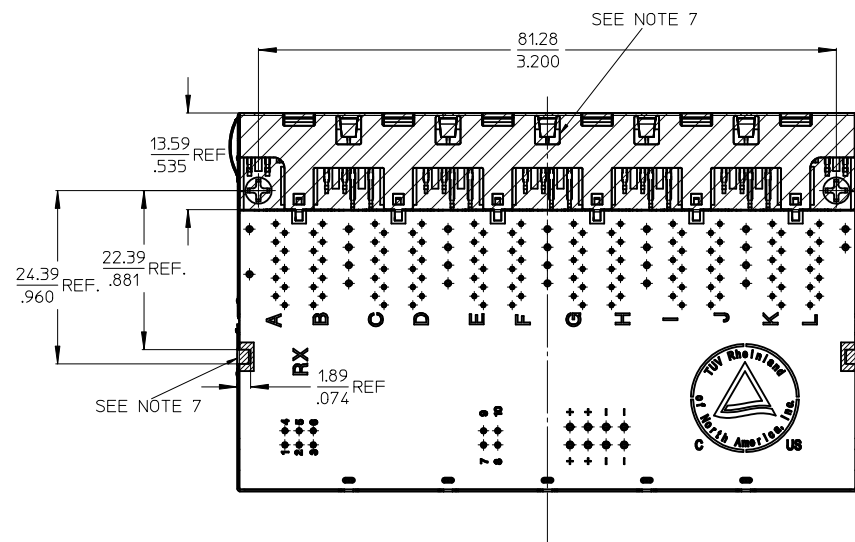
FRONT VIEW HYPERJACK 1000 POE+ ICM LED VERSION P/N 85719-0101



FRONT VIEW HYPERJACK 1000 POE+ ICM NON LED VERSION P/N 85719-0003



P / N	VERSION
85719-0101	LED VERSION
85719-0003	NON LED VERSION

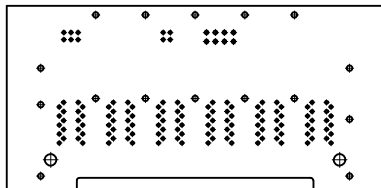


#### NOTES:

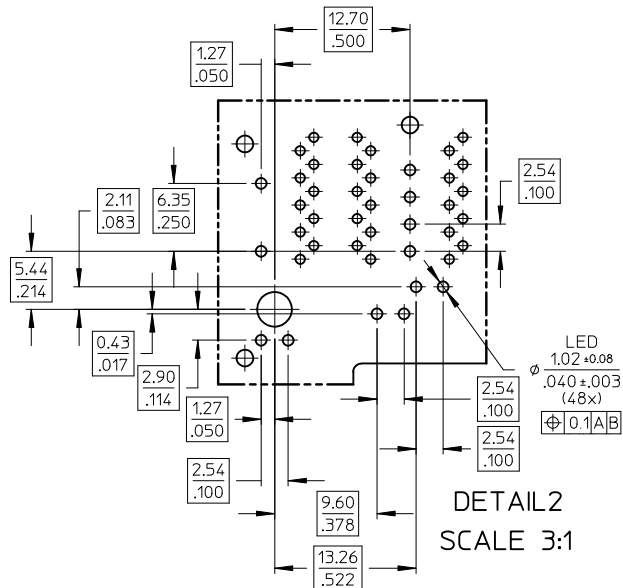
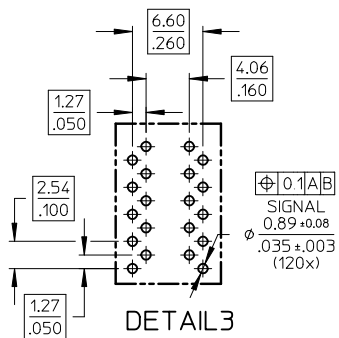
- 1 - SHIELD MATERIAL: BRASS, PLATING: NICKEL PRE-PLATING
- 2 - PLASTIC MATERIAL: POLYESTER (PBT), BLACK, UL94V-0
- 3 - TERMINALS MATERIAL: COPPER ALLOY  
RJ45 CONTACT PLATING: 0.76 MICROMETER GOLD OVER 1.9 MICROMETER NICKEL  
SOLDER TERMINALS: 3 MICROMETER TIN
- 4 - JACK TO BE MATED WITH FCC 68.5 PLUGS / IEC 60603-7 PLUGS
- 5 - PRODUCT SPECIFICATION: RPS-85719-001
- 6 - PACKAGING SPECIFICATION: PK-85719-001
- 7 - TRACES WITHOUT INSULATION NOT ALLOWED IN THE DASHED AREAS.  
(TO AVOID SHORTS TO SHIELD)
- 8 - STAND OFF TO SYSTEM BOARD

ENTER DESCRIPTION		QUALITY SYMBOLS	GENERAL TOLERANCES (UNLESS SPECIFIED)		DIMENSION STYLE		SCALE		DESIGN UNITS		THIRD ANGLE PROJECTION	
EC NO:	REV		mm	INCH	MM/IN	TITLE	2:1	METRIC				
MG2012-0006	A	▽=0	4 PLACES ± ---	± ---	DRAWN BY JBADER	DATE 2009/03/11	HYPERJACK 1000 POE+ PSE ICM 2X6					
2010/12/09		▽=0	3 PLACES ± ---	± .01	CHECKED BY MMANGARUDOV	DATE 2009/03/11						
CHKO:MMANGARUDOV			2 PLACES ± 0.25	± .02	APPROVED BY SSTEINKE	DATE 2009/03/11	MOLEX INCORPORATED					
2011/01/15			1 PLACE ± 0.5	± ---	MATERIAL NO.							
2012/06/12			ANGULAR ± 1 °		SIZE A2	THIS DRAWING CONTAINS INFORMATION THAT IS PROPRIETARY TO MOLEX INCORPORATED AND SHOULD NOT BE USED WITHOUT WRITTEN PERMISSION						
DRAFT WHERE APPLICABLE MUST REMAIN WITHIN DIMENSIONS					SEE BOM		SD-85719-101		SHEET NO. 1 OF 3			

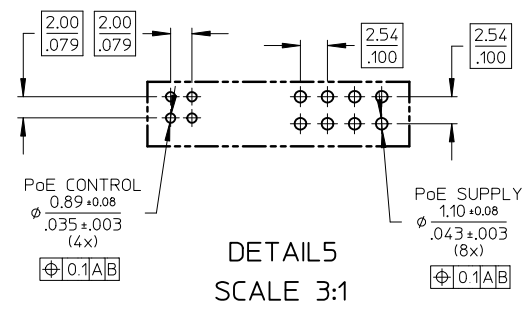
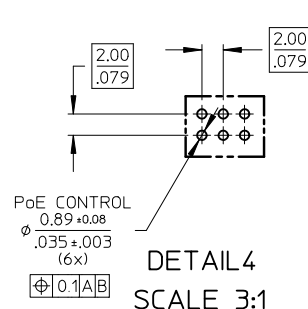
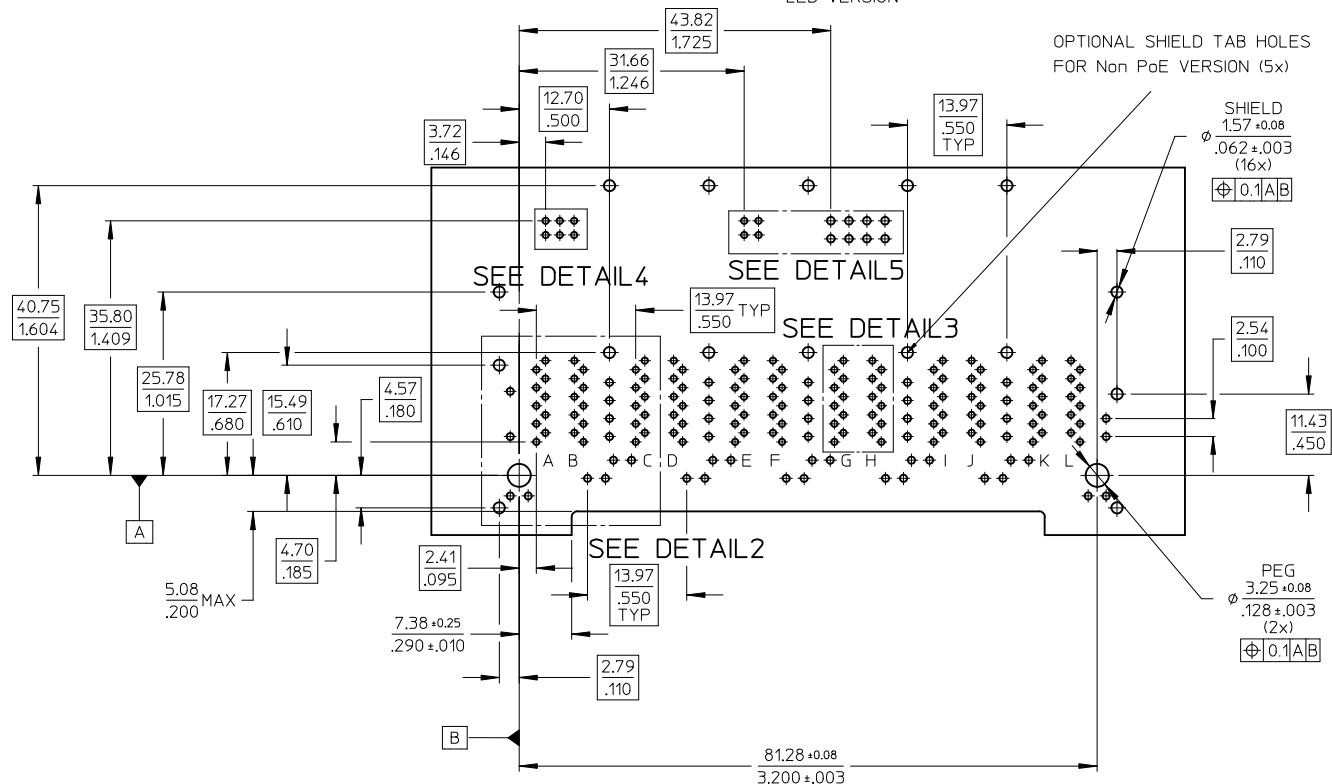
FOOT PRINT OUT FOR NON LED VERSION (85719-0003)  
MISSING DIMENSIONS SEE LED VERSION



SCALE 1:1



FOOT PRINT OUT FOR  
LED VERSION

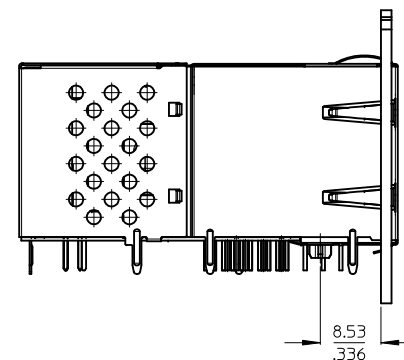
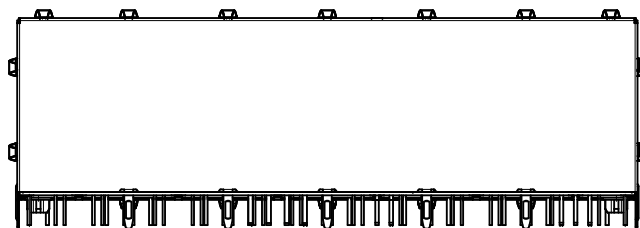
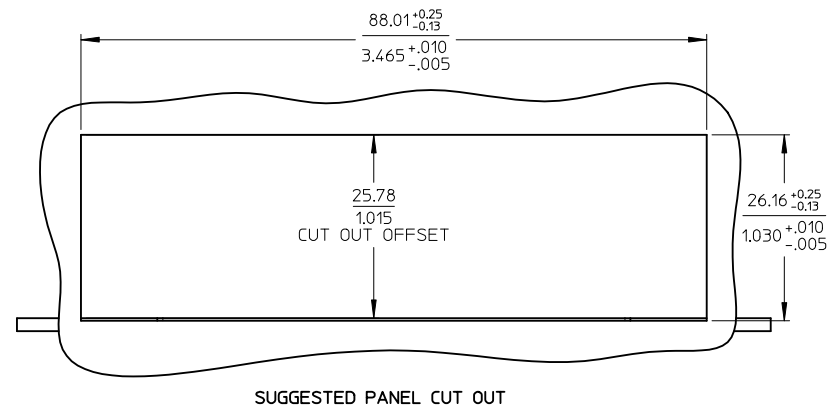
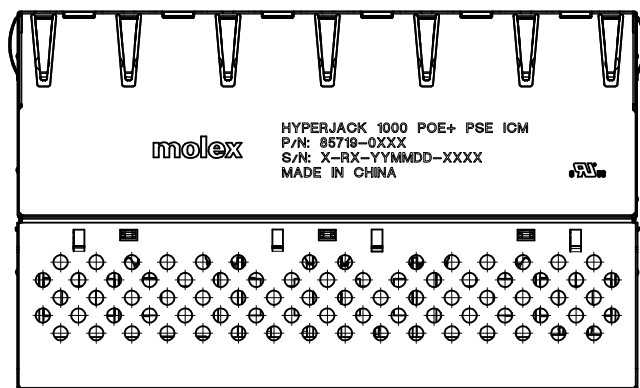


ENTER DESCRIPTION EC NO: M2012-0006 DRWN: JBADER CHKD: MMANGARUDOV APPR: SSTEINKE		QUALITY SYMBOLS ▽=0 ▽=0	DESCRIPTION	REV	GENERAL TOLERANCES (UNLESS SPECIFIED)			DIMENSION STYLE MM/IN		SCALE 2:1	DESIGN UNITS METRIC	THIRD ANGLE PROJECTION		
A		DRAFT WHERE APPLICABLE MUST REMAIN WITHIN DIMENSIONS			4 PLACES ± --- ± ---		DRAWN BY JBADER		DATE 2009/03/11		HYPERJACK 1000 POE+ PSE ICM 2X6 MOLEX INCORPORATED SD-85719-101 2 OF 3			
					3 PLACES ± --- ± .01		CHECKED BY		DATE					
					2 PLACES ± 0.25 ± .02		MMANGARUDOV		2009/03/11					
					1 PLACE ± 0.5 ± ---		APPROVED BY		DATE					
					SSTEINKE		2009/03/11							
					ANGULAR ± 1 °		MATERIAL NO.		DOCUMENT NO.		SHEET NO.			
							SEE SHEET 1							
							SIZE A2		THIS DRAWING CONTAINS INFORMATION THAT IS PROPRIETARY TO MOLEX INCORPORATED AND SHOULD NOT BE USED WITHOUT WRITTEN PERMISSION					

PRINTING  
LED VERSION  
HYPERJACK 1000 POE+ PSE ICM  
P/N: 85719-0101  
S/N: X-RX-YYMMDD-XXXX  
MADE IN CHINA

PRINTING  
NON LED VERSION  
HYPERJACK 1000 POE+ PSE ICM  
P/N: 85719-0003  
S/N: X-RX-YYMMDD-XXXX  
MADE IN CHINA

PRINTING



#### NOTES:

1 - PRINTING MARKED BY LASER

2 - INSCRIPTION:

1st LINE: PART NAME

2nd LINE: PART NUMBER

3rd LINE: SERIES NUMBER -> MANUFACTURER ID - CONNECTOR REVISION -

DATE CODE (YEAR, MONTH, DAY) - CONSECUTIVE NUMBER

4th LINE: COUNTRY OF ORIGIN

3 - UL LOGO (OPTIONAL)

ENTER DESCRIPTION		QUALITY SYMBOLS	DESCRIPTION	GENERAL TOLERANCES (UNLESS SPECIFIED)		DIMENSION STYLE		SCALE	DESIGN UNITS	THIRD ANGLE PROJECTION			
EC NO: MG2012-0006						MM/IN		2:1	METRIC				
DRWN:JBADER 2010/12/09				▽=0		mm	INCH	DRAWN BY	DATE	TITLE HYPERJACK 1000 POE+ PSE ICM 2X6			
CHKD:MMANGARUDOV 2011/01/15				▽=0		4 PLACES	± --- ± ---	JBADER	2009/03/11				
APPR:SSTE INKE 2012/06/12						3 PLACES	± --- ± .01	CHECKED BY	DATE	MOLEX MOLEX INCORPORATED			
						2 PLACES	± 0.25 ± .02	MMANGARUDOV	2009/03/11				
						1 PLACE	± 0.5 ± ---	APPROVED BY	DATE	SD-85719-101			
						ANGULAR ± 1 °		SSTEINKE	2009/03/11				
						DRAFT WHERE APPLICABLE MUST REMAIN WITHIN DIMENSIONS		MATERIAL NO.		DOCUMENT NO.		SHEET NO.	
A								SEE SHEET 1				3 OF 3	
						SIZE A2		THIS DRAWING CONTAINS INFORMATION THAT IS PROPRIETARY TO MOLEX INCORPORATED AND SHOULD NOT BE USED WITHOUT WRITTEN PERMISSION					