

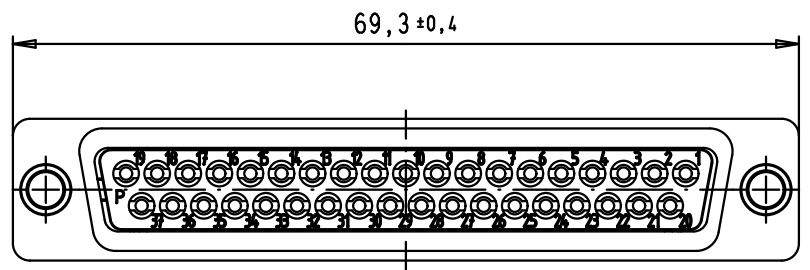
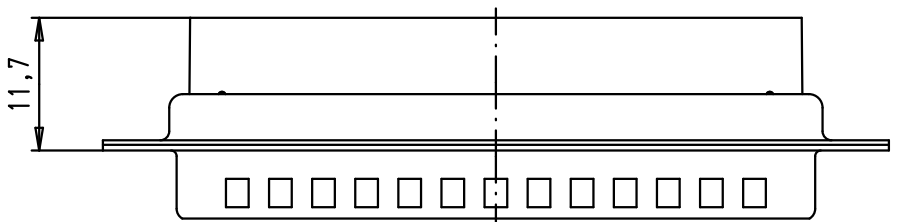
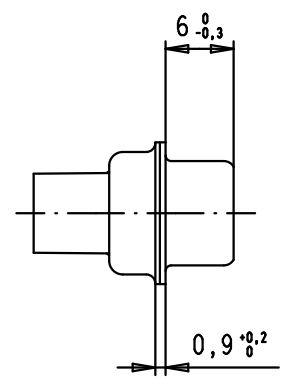
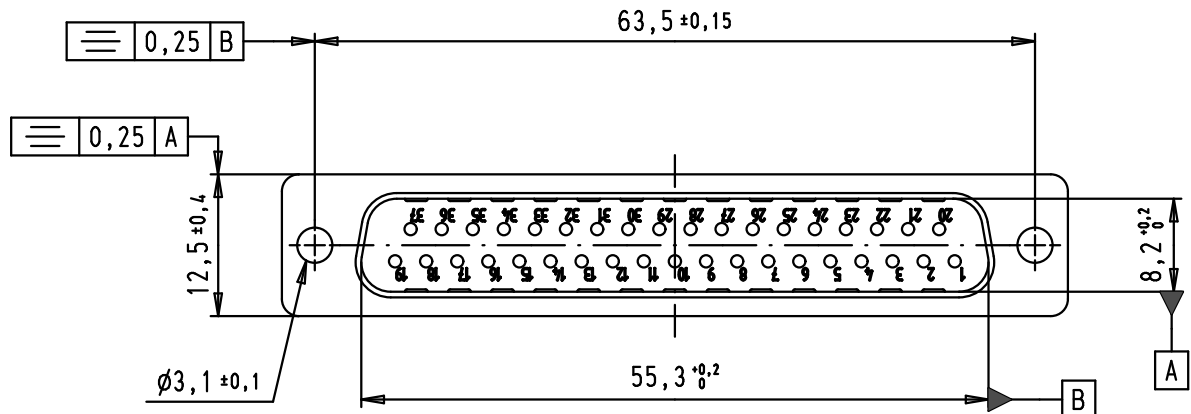
5

4

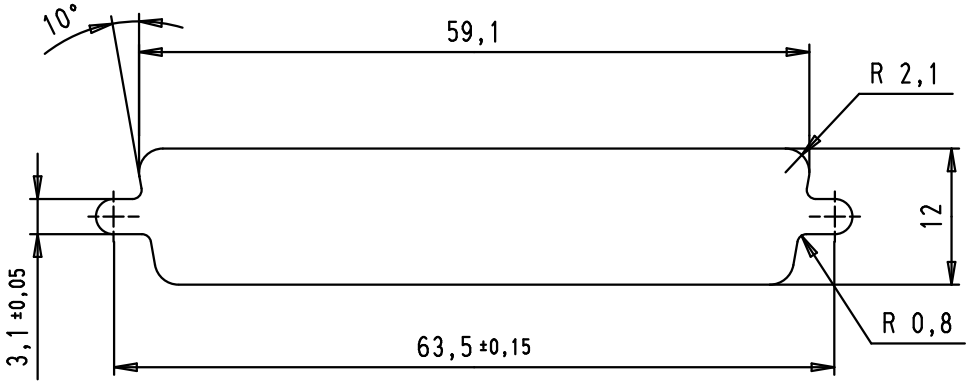
3

2


1



Panel cut out



A

Mod.	Dot.	Name	Detail.	Dot.	Name	 D-Sub, male, straight, 37 poles, for crimp contacts AWG 20-24, tin plated shell with dimples	Maßstab/ Scale
34784	14/02/08	PK	Detail.	09/04/02	CV		1,5:1
33106	22/09/05	JMDR	Insp.				
31571	12/11/03	SH	Stand.				
31526	31/07/03	TCP					
29768	09/04/02	CV	HARTING EURL F-95972 Paris			TB 09 67 037 5601 Sub.	Blatt/ Page
							1 / 2

All Dim. in mm  
Orig. Size DIN A 4

