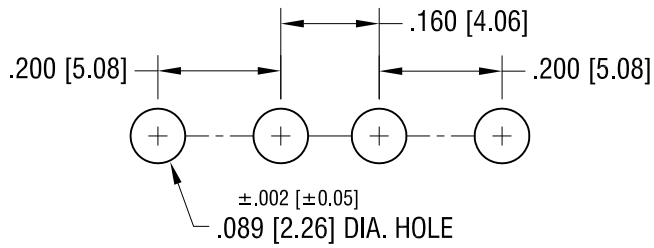
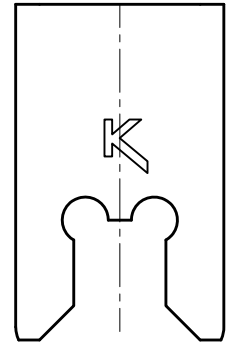
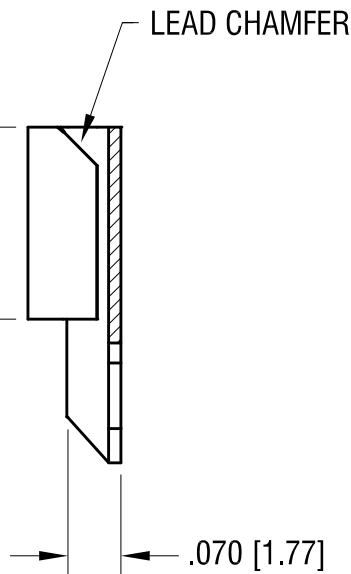
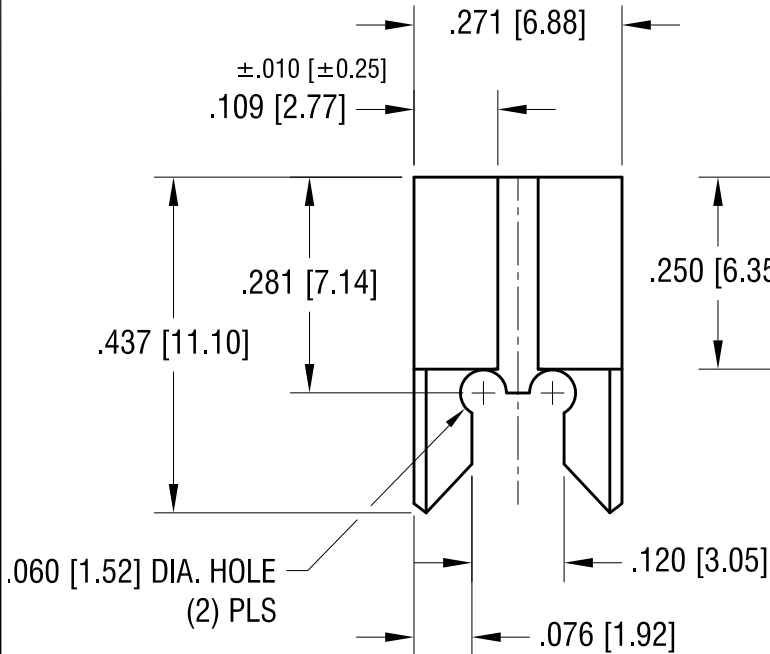
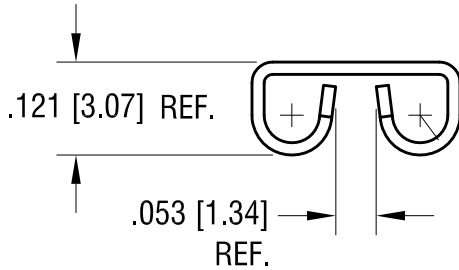


THIS DOCUMENT IS THE PROPERTY OF  
KEYSTONE ELECTRONICS CORP. AND  
SHALL NOT BE REPRODUCED, DISTRIBUTED  
OR USED AS A BASIS FOR MANUFACTURE  
WITHOUT PRIOR WRITTEN PERMISSION  
FROM KEYSTONE ELECTRONICS CORP.

**MOUNTING LAYOUT FOR TWO CLIPS**



**ACTUAL SIZE**



			<b>KEYSTONE ELECTRONICS CORP.</b>		
			www.keyelco.com • ASTORIA, N.Y. 11105-2017 • Tel (718) 956-8900		
			PART NAME		
			.205 x .020 PC QUICK-FIT TERMINAL		
			MATERIAL		
			.016 [0.40] TH'K BRASS		
9.05.12	CHANGE AS PER ECN 12-128	G	FINISH		DRN BY BOONE DATE 7.24.91
6.26.09	CHANGE AS PER ECN 09-087	F	TIN NICKEL PLATE		APP'D LN SCALE 4X
9.23.04	CHANGE AS PER ECN 04-128	E			DWG NO.
DATE	DESCRIPTION	REV.	TOLERANCES INCH [MM] DECIMAL ±.005 [±0.15] ANGULAR ± 1° UNLESS OTHERWISE SPECIFIED	CODE C	<b>3525</b>