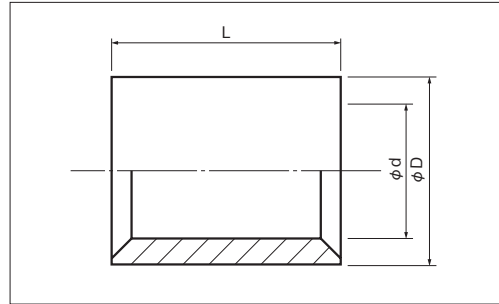


SLEEVES (P TYPE)

A

■ PARALLEL CONNECTOR



PART NUMBER	DIMENSIONS mm	WIRE RANGE					TOOL No.			STD QTY/BOX			
		L	φD	φd	SOLID mm	STRANDED mm ²	AWG MCM	HAND · HYDRAULIC	TOOL BODY No.		DIES No.		
P 0.5 ○	8.0	2.6	1.4	0.57~0.7	0.25~0.75	22-18	NH 1	NH 60 NH 61 NH 69	See page 126 For the die part number to use with NA10, NA20 or NA 3.	1,000 (100×10)			
P 1.25 ○		3.3	1.8	0.57~1.44	0.25~1.65	22-16							
P 2 ●		4.1	2.3	1.14~1.82	1.04~2.63	16-14							
P 5.5 ●	8.5	5.4	3.5	1.82~2.89	2.63~6.64	12-10				NH 9	NOM 60, NOP 60 NA 20	100	
P 8 ●	9.5	7.0	4.5	2.89~3.65	6.64~10.52	8							
P 14 ●	11.0	8.9	5.8	3.65~4.62	10.52~16.78	6							
P 22 ●	13.5	11.3	7.7	4.62~5.81	16.78~26.66	4							
P 38 ●	16.5	13.2	9.4	5.81~7.34	26.66~42.42	2						NOM 150, NOP 150HA NOH 300K	50
P 60 ●	19.0	15.3	11.4	-	42.42~60.57	1/0							
P 70 ●		17.5	13.3		60.57~76.28	2/0							
P 80 ●	19.5	19.5	14.5		76.28~96.3	3/0							
P 100 ●	20.0	22.1	16.4		96.3~117.2	4/0							
P 150 ●	27.0	26.4	19.5		117.2~152.05	250-300MCM	20						
P 180 ●	28.5	28.5	21.0		152.05~192.6	300-350MCM							
P 200 ●	32.0	32.4	24.0		192.6~242.27	400MCM		10					
P 325 ●	37.0	37.0	28.0		242.27~325	500-600MCM							
											5		

NOTE

- : JIS, UL·CSA ○ : UL·CSA △ : UL
- Refer to page 12 for UL/CSA and proper strip length of wire.