

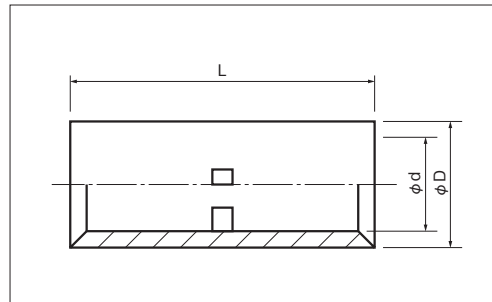
SLEEVES (B TYPE)

A

■ BUTT

JIS C 2806

■ BUTT CONNECTOR



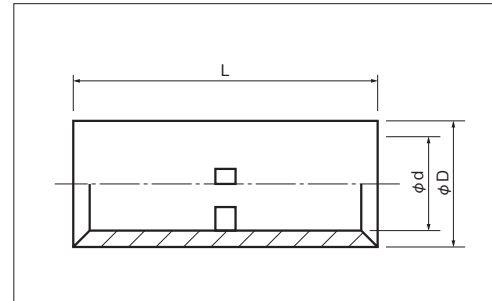
PART NUMBER	DIMENSIONS mm			WIRE RANGE			TOOL No.		STD QTY/BOX								
	L	φD	φd	SOLID mm	STRANDED mm ²	AWG MCM	HAND · HYDRAULIC	TOOL BODY No. / DIES No.									
B 0.5 ○	11.5	2.6	1.4	0.57~0.7	0.25~0.75	22-18	NH 1 NH 69 NH 60 NH 61 NH 9 NOM 60, NOM 60 REC-Li250M NA 20 NOM 150, NOP 150HA NOH 300K	See page 126 For the die part number to use with NA 10, NA20 or NA 3.	1000 (100×10)								
B 1.25 ●		3.3	1.8	0.57~1.44	0.25~1.65	22-16											
B 2 ●		4.1	2.3	1.14~1.82	1.04~2.63	16-14											
B 5.5 ●		5.4	3.5	1.82~2.89	2.63~6.64	12-10											
B 8 ●	21.0	7.0	4.5	2.89~3.65	6.64~10.52	8					100						
B 14 ●	26.0	8.9	5.8		10.52~16.78	6											
B 22 ●	29.0	11.3	7.7		16.78~26.66	4											
B 38 ●	32.0	13.2	9.4		26.66~42.42	2											
B 60 ●	36.0	15.3	11.4		42.42~60.57	1/0							50				
B 70 ○		17.5	13.3		60.57~76.28	2/0											
B 80 ●	38.0	19.5	14.5		76.28~96.3	3/0									20		
B 100 ●		22.1	16.4		96.3~117.2	4/0											
B 150 ●	54.0	26.4	19.5		117.2~152.05	250-300MCM									10		
B 180 ○	55.0	28.5	21.0		152.05~192.6	300-350MCM											
B 200 ●	63.0	32.4	24.0		192.6~242.27	400MCM											5
B 250 ●		35.0	26.5		250	-											
B 325 ●	72.0	37.0	28.0		242.27~325	500-600MCM											

NOTE

- 1) ● : JIS, UL, CSA ○ : UL, CSA
- 2) Refer to page 12 for UL/CSA and proper strip length of wire.

■ BUTT (EXTRA LONG)

■ BUTT CONNECTOR



PART NUMBER	DIMENSIONS mm			WIRE RANGE			TOOL No.	STD QTY/BOX
	L	φD	φd	SOLID mm	STRANDED mm ²	AWG MCM		
B 60-72L	72.0	15.3	11.4		42.42~60.57	1/0	SAME AS STANDARD BUTT CONNECTOR TOOL.	40
B 100-72L		22.1	16.4		96.3~117.2	4/0		20
B 150-72L		26.4	19.5		117.2~152.05	250-300MCM		15
B 200-72L		32.4	24.0		192.6~242.27	400MCM		10