

BULLETS & RECEPTACLES (PC·PCE TYPE)

SPECIFICATION

MATERIAL : Terminal : Brass (Electro-tin-plated)
 Sleeve : Oxygen free copper tube
 (electro-tin-plated)
 Insulator : Nylon
 RATED VOLTAGE : 300V

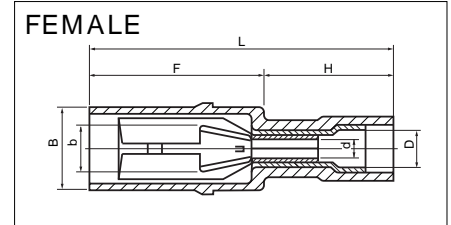
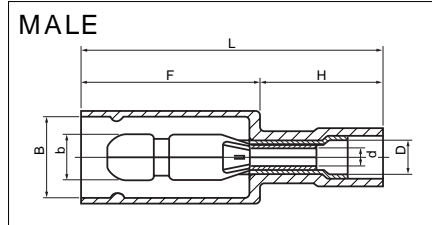
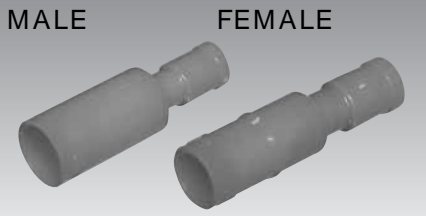
RATED CURRENT : See following table

Wire mm ²	0.5	0.75	1.25	2
A	10	12	15	20

TEMPERATURE RANGE : - 40 ~ + 105

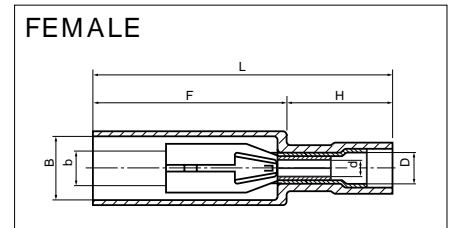
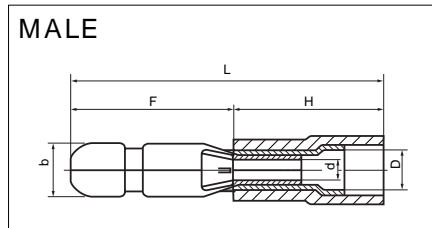
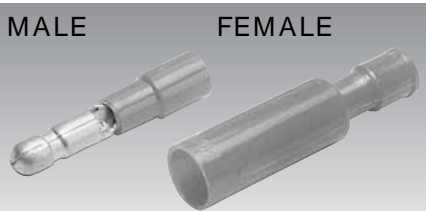
FLAME RETARDANCE : UL94V2

PC TYPE



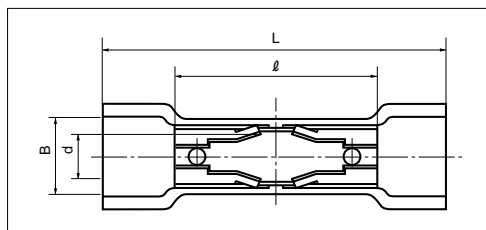
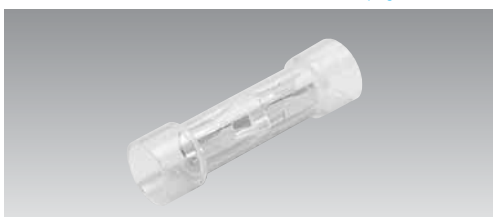
PART NUMBER	DIMENSIONS mm							WIRE RANGE		TOOL No.		INS	STD QTY/BOX
	b	B	d	D	L	F	H	STRANDED mm ²	AWG	HAND TOOL No.	TOOL BODY No. DIES No.		
PC 2005-M	2.0	5.1	1.7	3.1	26.5	15.0	11.5	0.5 ↓ 0.75	20-18	NH 5 NH 32 NH 60	NA 3 N3 5	Nylon	1,000 (100×10)
PC 2005-F	2.1	4.6			24.5	13.0							
PC 4009-M	4.0	7.4	1.8	3.2	27.7	16.5	11.2	0.75 ↓ 1.25	18-16	NH 11 NH 32	NA 3 N3 11	Nylon	1,000 (100×10)
PC 4009-F	3.95	6.9			26.2	15.0							
PC 4020-M	4.0	7.4	2.4	3.9	27.7	16.5	11.2	2.0	14	NH 12 NH 32	NA 3 N3 12	Nylon	1,000 (100×10)
PC 4020-F	3.95	6.9			26.2	15.0							

PCE TYPE



PART NUMBER	DIMENSIONS mm							WIRE RANGE		TOOL No.		INS	STD QTY/BOX
	b	B	d	D	L	F	H	STRANDED mm ²	AWG	HAND TOOL No.	TOOL BODY No. DIES No.		
PCE 4009-M	4.0	—	1.8	3.2	25.2	13.0	12.2	0.75 ↓ 1.25	18-16	NH 11 NH 32	NA 3 N3 11	Nylon	1,000 (100×10)
PCE 4009-F	3.95	6.5			31.5	20.3	11.2						
PCE 4020-M	4.0	—	2.4	3.9	25.2	13.0	12.2	2.0	14	NH 12 NH 32	NA 3 N3 12	Nylon	500 (100×5)
PCE 4020-F	3.95	6.5			31.5	20.3	11.2						
PCE 5020-M	5.0	—	2.4	3.9	25.2	13.0	12.2	2.0	14	NH 12 NH 32	NA 3 N3 12	Nylon	500 (100×5)
PCE 5020-F	4.95	7.4			31.5	20.3	11.2						

2-WAY RECEPTACLE



BC-4F is intermediate type of connector.
 Mating Male : PCE-4009M or PCE-4020M

PART NUMBER	DIMENSIONS mm				STD QTY/BOX
	B	d	L	l	
BC 4F	7.5	3.95	32.0	19.0	200