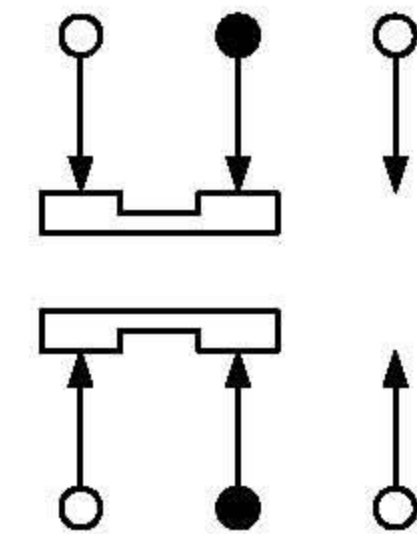


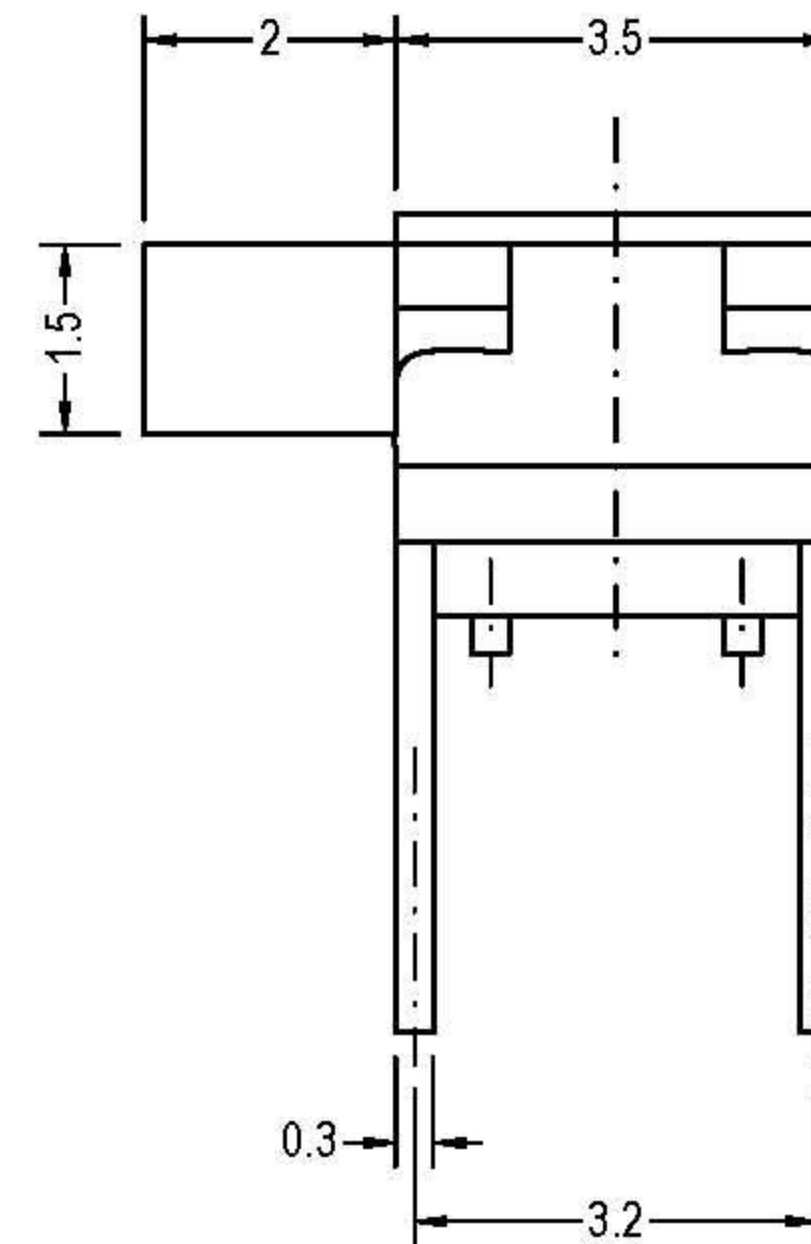
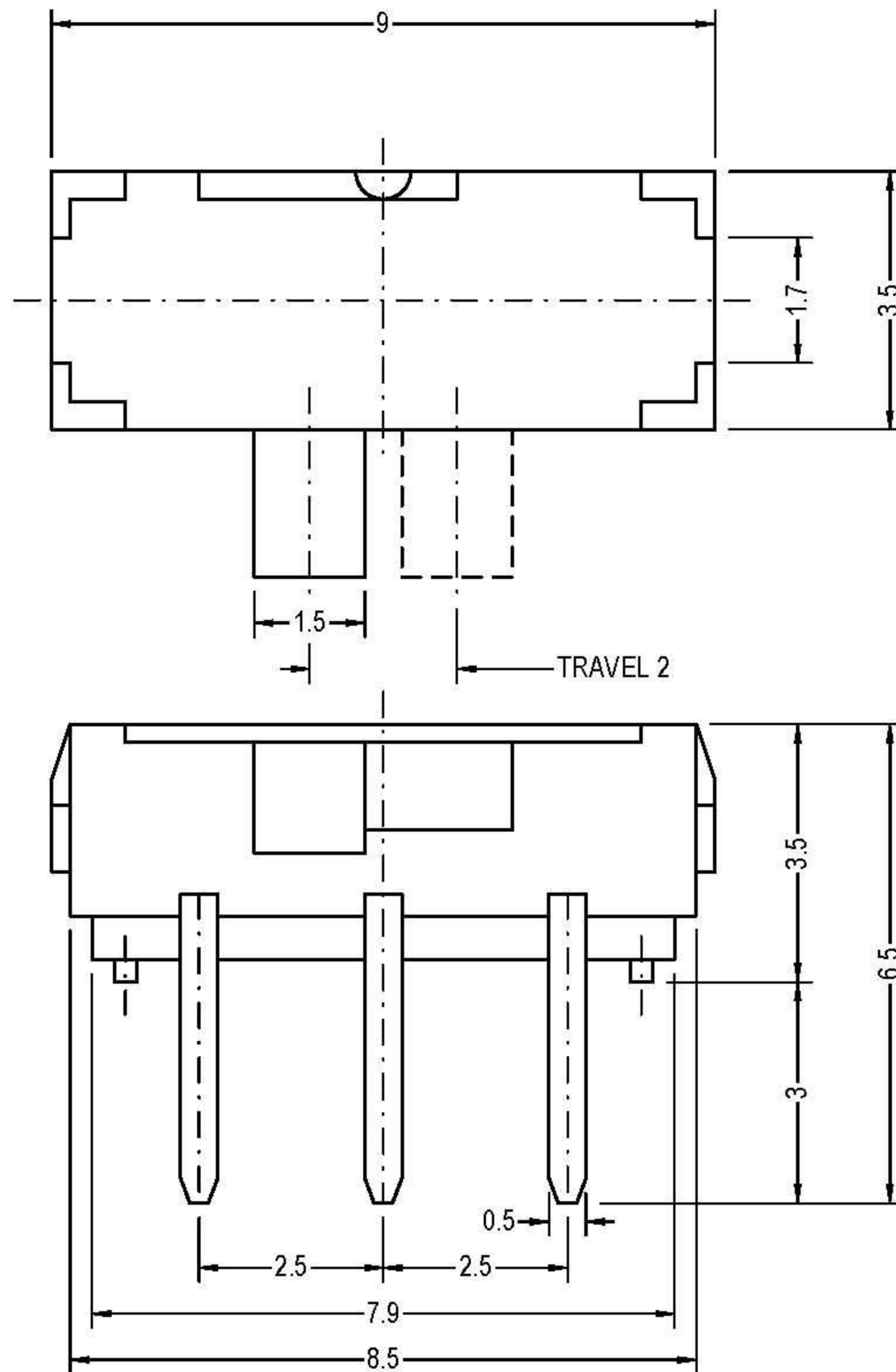
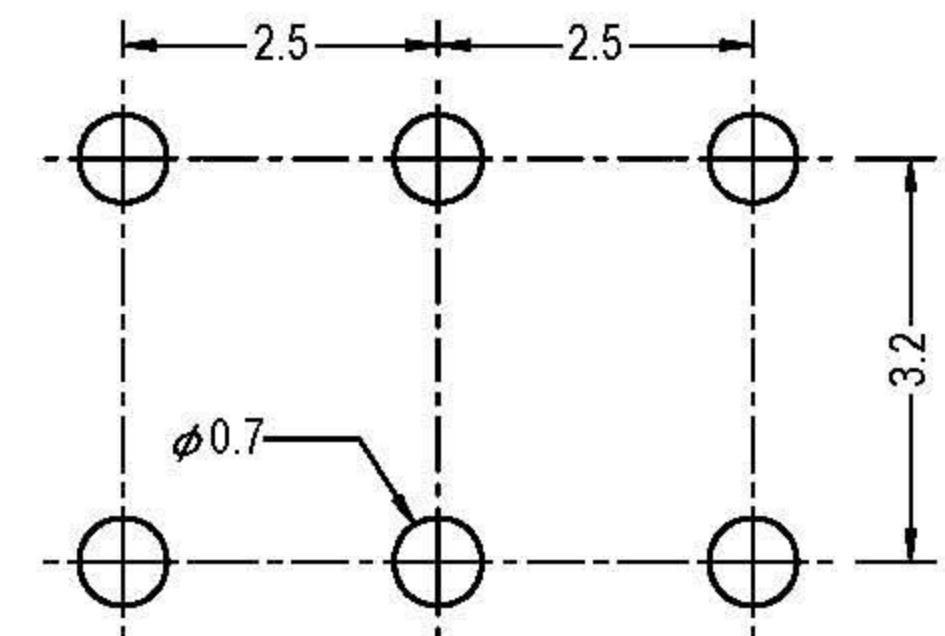
General specifications

Circuit : ON-ON(2P2T)
 Rating : D.C. 6V 0.3A
 Contact R.[max] : D.C. 5V 1A 70mΩ
 Insulation R.[min] : D.C. 500V 100MΩ
 Withstand VOL. : A.C. 500V 1minute
 Timing : Non Shorting
 Operating force : 200±100g
 Life cycle[max] : 5,000 CYCLES

SCHEMATIC



P.C.B. HOLE DETAIL



Light Country Co., Ltd.

比例 SCALE 1 : 8

單位 DIMENSION mm

DO NOT SCALE DRAWING
TOLERANCES UNLESS OTHERWISE

UP TO 10 ±0.3

ABOVE 10 TO 100 ±0.5

ABOVE 100 ±0.8

ANGULAR DIMENSIONS ±5°

品名 TITLE

MINI SLIDE SWITCH

型號 MODEL

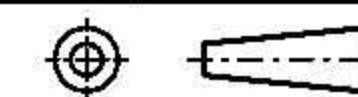
MSS-2245

繪圖
DRAWN

MKL 2006/05/26

核准
APPROVED

HSH 2006/05/26



版次
REVISION

A

日期
DATE

2006/05/26

規格書 SPECIFICATION

TITLE (產品類別) : MINI SLIDE SWITCH

MODEL (產品型號) : MSS-2245 SERIES

1. RATING (額定值) : DC 6V 0.3A

2. FUNCTION (接觸型式) : 2P2T

3. TIMING (時間特性) : NON-SHORTING

ITEM 項目	TEST CONDITIONS 測試條件	PERFORMANCE 規格	
4.ELECTRICAL PERFORMANCE(電氣性能規格):			
4.1	CONTACT RESISTANCE 接觸電阻	MEASURED AT 1KHz SMALL CURRENT(100 mA OR LESS) 在 1KHz 微小電流(100mA 以下)測試.	70mΩ MAX. 70 毫歐以下。
4.2	INSULATION RESISTANCE 絕緣電阻	APPLY A VOLTAGE OF 500V DC SHALL BE APPLIED FOR 1 MIN AFTER WHICH MEASUREMENT BE MADE: (1) BETWEEN TERMINALS. (2) BETWEEN INDIVIDUAL TERMINALS AND FRAME. 輸入 500V DC 電壓 1 分鐘,按以下接觸方法測試: (1) 端子相互之間. (2) 端子與外殼之間.	100MΩ MIN. 100 兆歐以上。
4.3	WITHSTAND VOLTAGE 耐電壓	AC 500V rms(50-60Hz)FOR 1 MIN TRIP CURRENT:0.5 mA (1) BETWEEN TERMINALS. (2) BETWEEN INDIVIDUAL TERMINALS AND FRAME. 輸入 AC 500V(50-60Hz)電壓,1 分鐘感度電流為 0.5mA,按以下接觸方法測試: (1) 端子相互之間. (2) 端子與外殼之間 .	WITHOUT DAMAGE TO PARTS ARCING OR BREAKDOWN, ETC. 沒有絕緣破壞等異常.
5.MECHANICAL PERFORMANCE(機械性能規格):			
5.1	OPERATING FORCE 作動力		250gf ± 150gf
5.2	TERMINAL STRENGTH 端子強度	A STATIC LOAD OF 300gf SHALL BE APPLIED TO THE TERMINAL FOR 60 SEC.IN ANY DIRECTION 在端子的任意一個方向加 300gf 力度測試,時間為 60 秒.	ELECTRICAL CHARACTERISTICS SHALL BE SATISFIED WITHOUT DAMAGE OR EXCESSIVE LOOSENESS OF TERMINALS. 在端子中沒有裂開.鬆動等異常, 滿足機械、電氣性能.
5.3	STANDARD ATMOSPHEIC CONDITIONS 測試標準狀態	UNLESS OTHERWISE SPECIFIED. THE STANDARD RANGE OF ATMOSPHERIC CONDITIONS FOR MAKING MEASUREMENTS AND TESTS ARE AS FOLLOWS: (1) AMBIENT TEMPERATURE : 5°C TO 35°C (2) RELATIVE HUMIDITY : 45% TO 85% (3) AIR PRESSURE : 86Kpa TO 106Kpa 在沒有指定的情況下測試溫度、濕度、氣壓如下: (1) 溫度為 5~35°C. (2) 濕度為 45%~85%. (3) 氣壓為 86Kpa~106Kpa.	

規格書 SPECIFICATION

TITLE (產品類別) : MINI SLIDE SWITCH

MODEL (產品型號) : MSS-2245 SERIES

5.4	PRACTICAL TEMPERATURE RANGE 使用溫度範圍	-16°C~+60°C. 在-16°C~+60°C內使用.										
6.DURABILITY(耐久性):												
6.1	SOLDERABILITY TEST 可焊性試驗	THE TOP OF THE TERMINALS SHALL BE DIPPED 2mm IN THE SOLDER BATH OF 230±5°C FOR 3±0.5 SECONDS. 端子頂部被浸入錫焊池中 2mm 深，溫度為 230±5°C，時間為 3±0.5 秒。	THE AREA OF SOLDERING. SHOULD BE OVER 75%. 焊接面積要有 75%以上.									
6.2	RESISTANCE TO SOLDERING HEAT TEST 耐焊性試驗	<p>(1). TEMPERATURE AND IMMERSING TIME 溫度與浸錫時間</p> <table border="1" style="width: 100%; border-collapse: collapse;"> <thead> <tr> <th style="width: 50%;"></th> <th style="width: 25%;">TEMPERATURE 溫度(°C)</th> <th style="width: 25%;">TIME 時間(S)</th> </tr> </thead> <tbody> <tr> <td style="text-align: center;">DIP SOLDERING 浸錫</td> <td style="text-align: center;">260±5</td> <td style="text-align: center;">3±1</td> </tr> <tr> <td style="text-align: center;">MANUAL SOLDERING 手焊</td> <td style="text-align: center;">360±10</td> <td style="text-align: center;">3±1</td> </tr> </tbody> </table> <p>(2). IMMERSION DEPTH: IMMERSION DEPTH UP TO THE SURFACE OF THE BOARD THICKNESS OF PRINTED WIRING BOARD 1.6mm. 浸錫深度： 浸錫深度至基板(PCB)表面，基板厚度為 1.6mm。</p> <p>(3). WAVE SOLDERING 波峰焊 (A) 260±5°C 5 SEC. MAX. (B) PREHEAT TIME SHALL BE 30 SECONDS MAX. AT 100°C MAX. 預熱溫度 100°C 以下,30 秒以內完成.</p>		TEMPERATURE 溫度(°C)	TIME 時間(S)	DIP SOLDERING 浸錫	260±5	3±1	MANUAL SOLDERING 手焊	360±10	3±1	WITHOUT DEFORMATION OF CASE OR EXCESSIVE LOOSENESS OF TERMINALS ELECTRICAL CHARACTERISTICS SHALL BE SATISFIED. 本體無變形,能滿足於機械、電氣性能。
	TEMPERATURE 溫度(°C)	TIME 時間(S)										
DIP SOLDERING 浸錫	260±5	3±1										
MANUAL SOLDERING 手焊	360±10	3±1										
6.3	LIFE TEST 壽命試驗	ENDURANCE WITHOUT LOADING: A SWITCH SHALL BE SUBJECTED TO 5,000 CYCLES AT A SPEED OF 15 TO 18 CYCLES PER MINUTE WITHOUT LOADING. 無負荷: 在無負荷的條件下以每分鐘 15~18 回的速度進行 5,000 次的測試.	(1) CONTACT RESISTANCE (接觸電阻) 200mΩ MAX. 200 毫歐以下。 (2) WITHOUT DAMAGE TO PARTS ARCING OR BREAKDOWN ETC. (測試後外表無損傷,并且滿足機械與電氣性能)									

規格書 SPECIFICATION

TITLE (產品類別) : MINI SLIDE SWITCH

MODEL (產品型號) : MSS-2245 SERIES

6.4	HEAT TEST 耐熱試驗	THE SWITCH SHALL BE STORED AT A TEMPERATURE OF $80 \pm 2^{\circ}\text{C}$ FOR 96 HOURS. THEN THE SWITCH SHALL BE MAINTAINED AT STANDARD ATMOSPHERIC CONDITIONS FOR 1 HOUR AFTER WHICH MEASUREMENT SHALL BE MADE. 放置在溫度 $80 \pm 2^{\circ}\text{C}$ 中測試 96 小時后,再放置正常室溫中 1 小時來測定.	THERE SHALL BE NO DEFORMATION OR CRACKS IN MOLDED PART. 外觀無異常,滿足於機械、電氣性能。
6.5	HUMIDITY TEST 潮濕試驗	THE SWITCH SHALL BE STORED AT A TEMPERATURE OF $40 \pm 2^{\circ}\text{C}$ AND A HUMIDITY OF 90% TO 95% FOR 96 HOURS. THEN THE SWITCH SHALL BE MAINTAINED AT STANDARD ATMOSPHERIC CONDITION FOR 1 HOUR AFTER WHICH MEASUREMENT SHALL BE MADE. 放置 $40 \pm 2^{\circ}\text{C}$ 的相對濕度為 90%~95% 環境中 96 小時后,再將樣版放在正常環境 1 小時后進行測試.	
6.6	COLD TEST 耐冷試驗	THE SWITCH SHALL BE STORED AT A TEMPERATURE OF $-20 \pm 3^{\circ}\text{C}$ FOR 96 HOURS. THEN THE SWITCH SHALL BE MAINTAINED AT STANDARD ATMOSPHERIC CONDITIONS FOR 1 HOUR AFTER WHICH MEASUREMENT SHALL BE MADE. 放置在溫度 $-20 \pm 3^{\circ}\text{C}$ 中 96 小時后,再放置常溫常濕中 1 小時來進行測試。	