

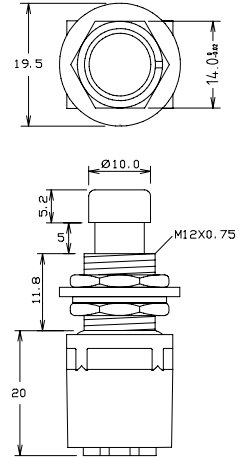
CLIFF

SWITCHES

4066 SERIES



- FC71025** SPDT ON/OFF solder tags.
- FC71035** SPDT ON/OFF PC tags
- FC7105** DPDT Momentary solder tags.
- FC71055** DPDT ON/OFF solder tags.
- FC7106** DPDT Momentary PC tags
- FC71065** DPDT ON/OFF PC tags



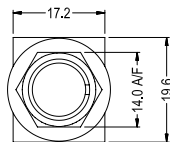
Rated 1A. 250VAC

Contact Sales for full drawing and specification.

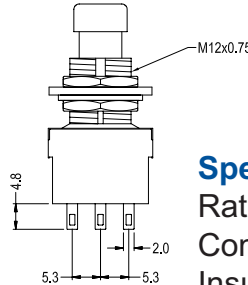
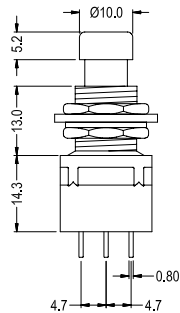
3 POLE SERIES



FC71101



3PDT switch solder tags

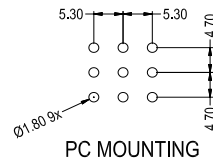
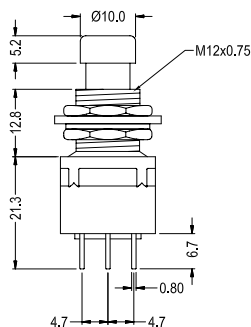
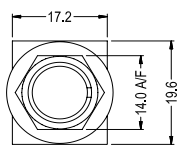


Specification

Rating: AC125V 4A, 250V 2A.
 Contact Resistance: 20mΩ max.
 Insulation Resistance: DC500V 100MΩ min.
 Dielectric Strength: AC1500V 1 minute.
 Operating temp: -20°C to +65°C
 Electrical life: 20,000 make/break cycles at full load.



FC71102



3PDT switch PCB tags.

For further information, contact: sales@cliffuk.co.uk