

Drq No :- 74074

FINAL ASSEMBLY

No OFF	ITEM No	DRG No	DESCRIPTION
1	01	74007	XP BODY
1	02	74008	XP BODY
2	03	418852040	TERMINAL
2	04	418852080	TERMINAL
1	05	418852090	SHORTING BAR
1	06	74018	SPRING
1	07	74019	SPRING
1	08	74057	PLUNGER
2	09	74040	RIVET

ISSUE	REVISION	DATE
1	FIRST ISSUE	21/04/99
2	VDE LOGO REMOVED DPCA14269	03/01/02
3	Following parts changed: 74007 was 74004/ 74008 was 74005/ 74057 was 74023/ Part-No. of Pos.3-5 corrected, Pos. 9 added according to Movex Bom [s. TM23312 / CRN2R00241]	07.12.15/ kual

SPECIFICATION

OPERATING FORCE :- 3.0N MAX.
 TOTAL TRAVEL FORCE :- 5.5N MAX
 REST POSITION :- 15.3 MAX.
 OP POSITION CONTACT 1-2 OPEN :- 14.9 ±0.4
 OP POSITION CONTACT 3-4 CLOSED :- 13.0 ±0.4
 FULL OVER TRAVEL POSITION:- 8.0 MAX
 OVER TRAVEL :- 4.5 MIN

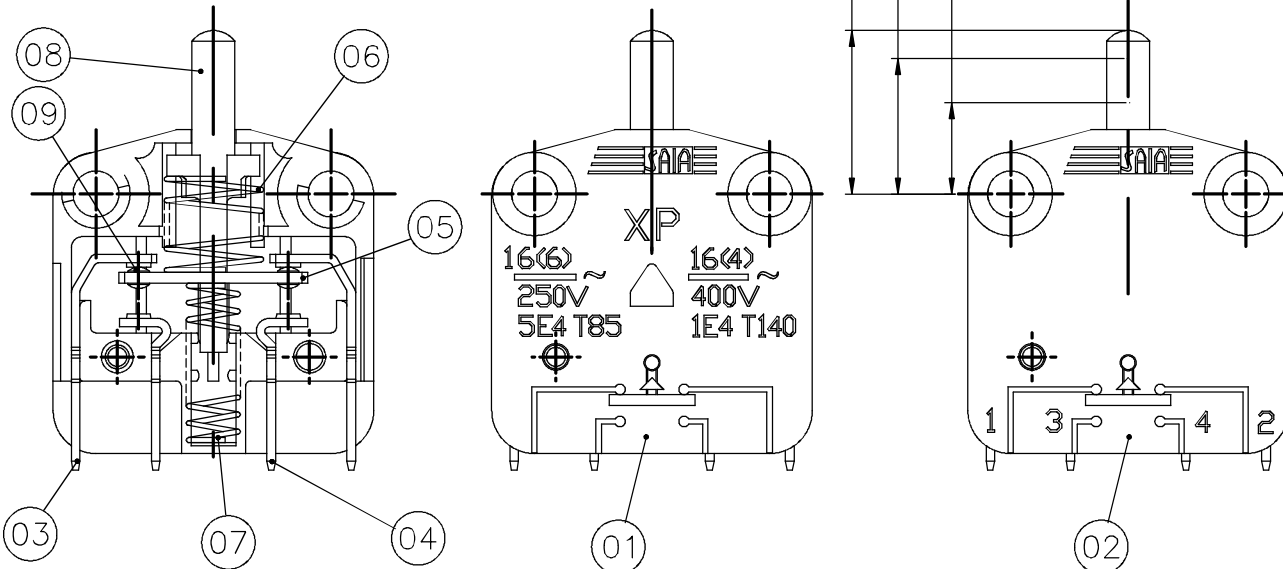
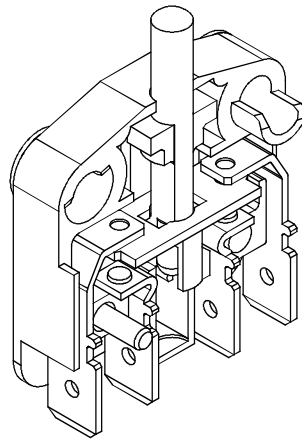
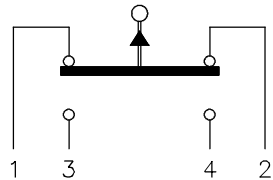


DIAGRAM OF CONNECTIONS



1 2 3 4 5 6 7 8 9



THIRD ANGLE PROJECTION
 DO NOT SCALE!
 THIS DRAWING MUST ONLY BE AMENDED ON A CAD SYSTEM
 ALL DIMENSIONS SPECIFIED IN MILLIMETRES

TOLERANCES UNLESS STATED:-
 NO DECIMAL PLACE ±0.50
 1 DECIMAL PLACE ±0.25
 2 DECIMAL PLACES ±0.15
 ANGULAR ±1°

APPROVED		TITLE / DESCRIPTION	
DRAWN	M.P.		XP2Z11
DATE	21/04/99		
SCALE	2/1		Drq No :- 74074
QUALITY ASSURANCE		A3	

Drawing Office: ENGINEERING
 Date: 21/04/99
 Scale: 2/1
 Title: XP2Z11
 Drawing No: 74074
 Sheet: A3