

Spezifikation Specification

Schnappschalter-Kontakte
Snap- action contacts

Ruhestellung:
Free position Lo: max. 6.2 mm

Schaltpunkt:
Operating position Ls: 5.5 ± 0.3 mm

Differenzweg:
Movement differential: 0.2 mm

Betätigungskraft:
Actuating force: max. 1.5 N

Überhubstellung:
Total travel position Le: 5 mm

Rückschaltkraft:
Release force: min. 0.2 N

Schutzart:
Degree of protection: IP 40

Kontakte:
Contacts: Silber-Legierung
Silver alloy

Anschlüsse:
Terminals: Messing, Silber-flash
Brass, silver flash

Mech. Lebensdauer:
Mechanical Life: $1E7$

Anerkannte Standards:
Approved standards:

3.0A/125-250 VAC 6E3 / CO (NC/NO)



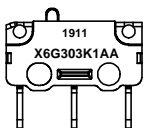
0.5A/250 VAC 5E4 / CO



2.0A/250 VAC 1E4 / NO/NC

Bedruckung
Printing

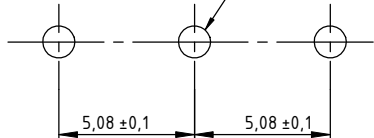
Produktions-Datum: KW Jahr
Manufacturing date: CW Year



Typenschlüssel
Type code

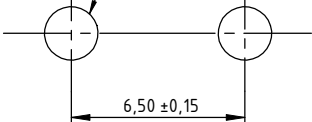
Platinen-Einbaumaße
PCB mounting dimensions

Drei Bohrungen, $\varnothing 1.2$ mm
Three, $\varnothing 1.2$ mm holes

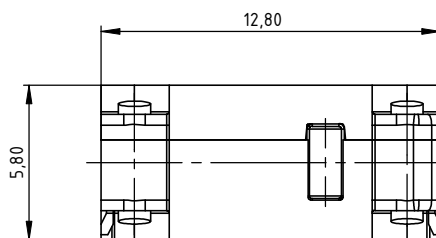
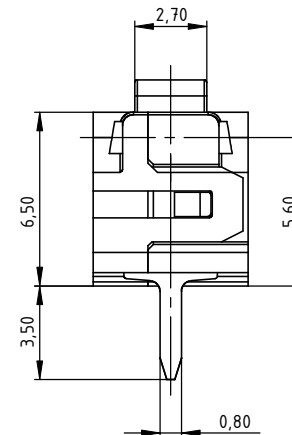
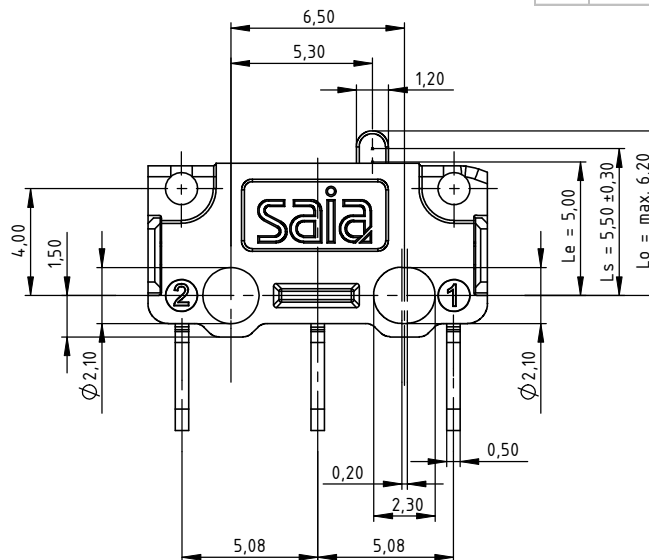


Befestigungsbohrungen
Mounting holes

Zwei Bohrungen, $\varnothing 2$ mm
Two, $\varnothing 2$ mm holes



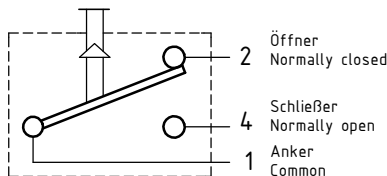
Einbauzeichnung Installation Drawing



M 2:1



Schaltbild Circuit diagram



Zur Freigabe durch den Kunden
For approval by customer

Allgemeintoleranzen nach DIN ISO 2768-1 (Auszug) general tolerances see DIN ISO 2768-1 (abridgement)					
Toleranzklasse grade of tolerance	0,5 bis/to 3	über/over 3 bis/to 6	über/over 6 bis/to 30	über/over 30 bis/to 120	über/over 120 bis/to 400
f (fein/fine)	± 0.05	± 0.05	± 0.1	± 0.15	± 0.2
m (mittel/middle)	± 0.1	± 0.1	± 0.2	± 0.3	± 0.5

Environmental Requirement as ESDC067		
DWN. BY de04fre0	CHK. BY de04fage0	APP. BY
Date (yyyymmdd) 19.05.2011	Date (yyyymmdd) 20.08.2012	Date (yyyymmdd)
MATERIAL:		Project-No.: E2544
FINISH:		Type: X6
General Tolerance: ISO 2768-1 Class m (Unless specified)		SCALE 5:1 (2:1)
ALL DIMENSIONS ARE IN MILLIMETRES		TITLE Ultraminiatur Microswitch
JOHNSON ELECTRIC JOHNSON ELECTRIC GROUP OF COMPANIES ("JOHNSON ELECTRIC")		Ultraminiatur Mikroschalter
DWG No. X6G303K1AA_C		SHEET 1 OF 1
1434-9CE0001EP		

Für die korrekte Art des Einbaus ist der Anwender verantwortlich!
Responsibility for the proper fitting is taken by the handler!

C _{pk}	Characteristics
> 1.67	Key Product
> 1.33	Customer Significant
> 1.00	
Not Required	