

Drg No :- C 44105

INSTALLATION DRAWING

ISSUE	REVISION	DATE
1	FIRST ISSUE	14/9/00

SPECIFICATION

FREE POSITION :- 16.8(0.66) MAX

TOTAL TRAVEL :- 14.1(0.56) POSITION

ACTUATING FORCE:- 4.5N(16.2ozf)MAX AT CONTACT BREAK

ACTUATING FORCE :-4.8N(17.3ozf)MAX AT TOTAL TRAVEL POSITION

MIN GAP AT TOTAL :- 3.0 (0.12) TRAVEL POSITION

SPECIAL FEATURE :- TESTED AND STAMPED TO U.L. AND CSA REQUIREMENTS.

SWITCH SUBJECT TO 100,000 OPERATIONS COMPLIANCE TEST

APPROVAL RATING :-
10A - 250 VAC
1/2HP - 125 OR 250 VAC

DEGREE OF PROTECTION:- ENCLOSURE IEC IP40

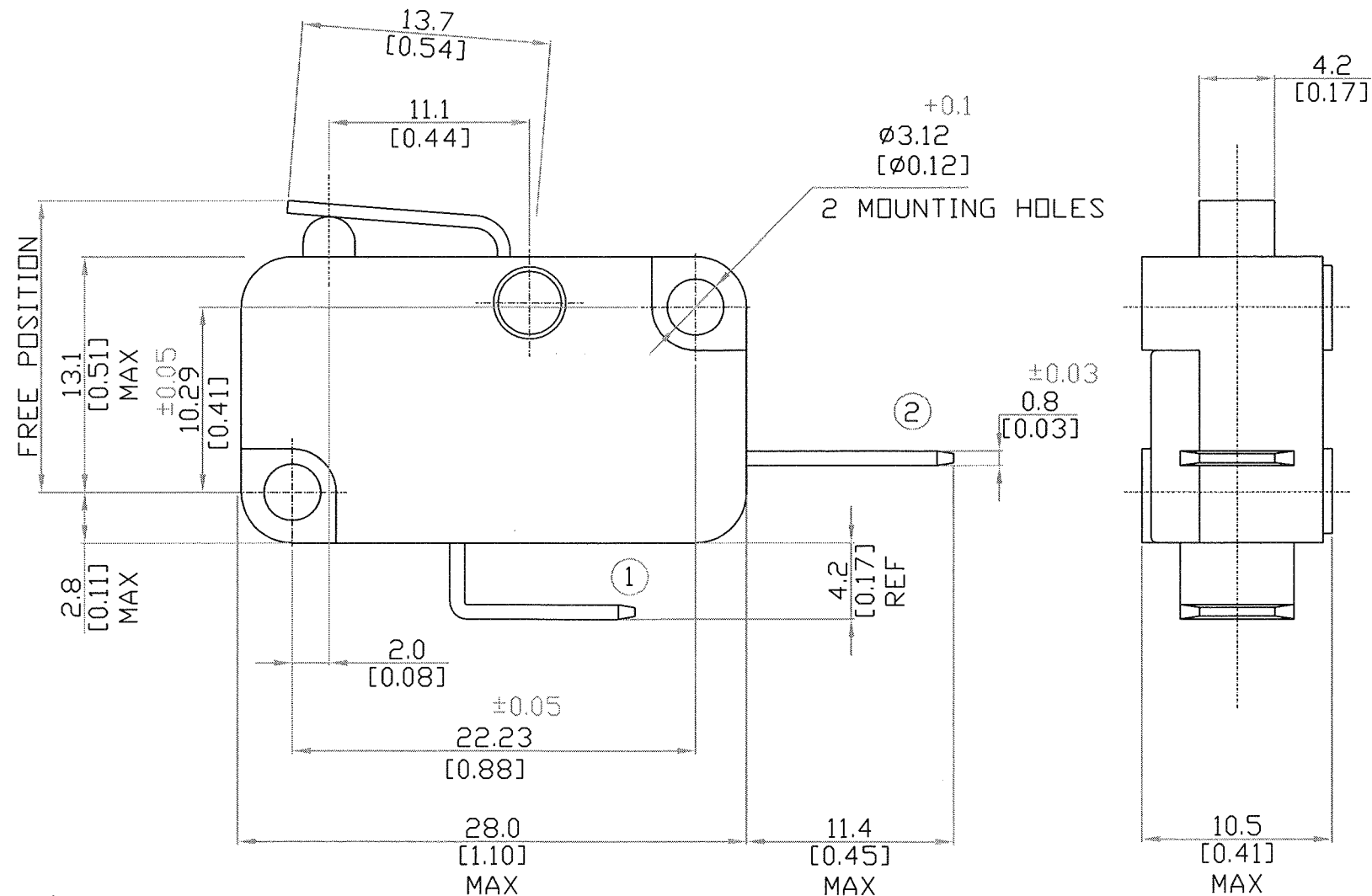
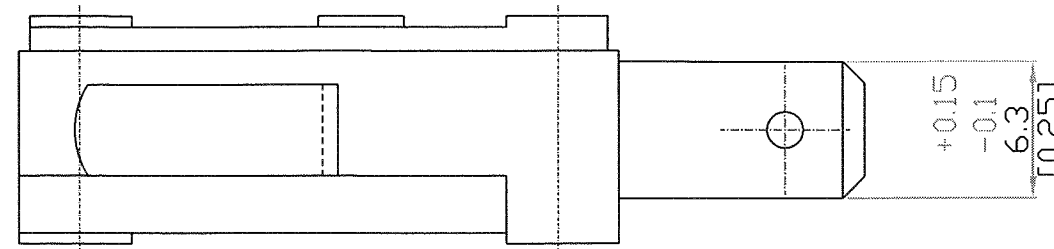
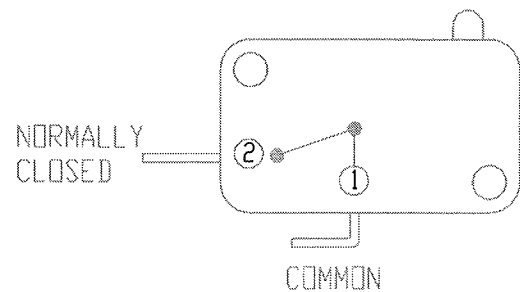


DIAGRAM OF CONNECTIONS



24 OCT 2000

SAIA-Burgess Electronics

SWITCHES • MOTORS • CONTROLLERS

SAIA-Burgess Electronics Limited
Dukesway, Team Valley Trading Estate
Gateshead, Tyne & Wear NE11 0UB
Tel: (0191)4016100, Fax: (0191)4016322



DO NOT SCALE !
This drawing must only be amended on CAD system

TOLERANCES UNLESS STATED:-
NO DECIMAL PLACE ±0.50 1 DECIMAL PLACES ±0.25
2 DECIMAL PLACES ±0.15 ANGULAR ±1°
INCH - OUNCE UNITS (IN BRACKETS)

ALL DIMENSIONS SPECIFIED IN MILLIMETRES

DRAWN	T.BELL.	Approved	
DATE	14/9/00	DRAWING OFFICE	MLO
SCALE	3/1	ENGINEERING	[Signature]
DATE ISSUED		QUALITY ASSURANCE	[Signature]

TITLE / DESCRIPTION
BVM3FY-ULS

Drg No :- C 44105

A3