

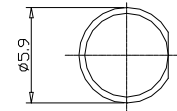
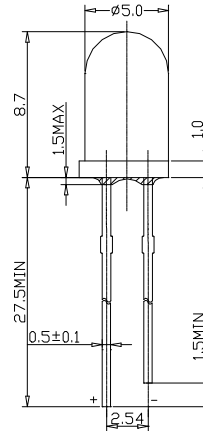
■Features

- 5ø Standard Directivity
- Superior Weather-resistance
- UV Resistant Epoxy
- Water Clear Type
- RoHS Compliant

■Applications

- General Purpose Indicators
- Small Area Illuminations
- Back Lighting

■Outline Dimension



Unit :mm
Tolerance :±0.25mm

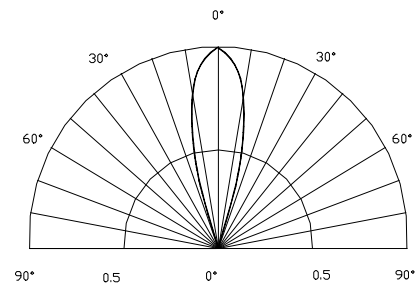
■Absolute Maximum Rating

(Ta=25°C)

Item	Symbol	Value	Unit
DC Forward Current	I _F	30	mA
Pulse Forward Current*	I _{FP}	100	mA
Reverse Voltage	V _R	5	V
Power Dissipation	P _D	120	mW
Operating Temperature	Topr	-30~ +80	°C
Storage Temperature	Tstg	-30 ~+100	°C
Lead Soldering Temperature	Tsol	260°C/3sec	-

*Pulse width Max.10ms Duty ratio max 1/10

■Directivity



■Electrical -Optical Characteristics

(Ta=25°C)

Item	Symbol	Condition	Min.	Typ.	Max.	Unit
DC Forward Voltage	V _F	I _F =20mA	2.8	3.4	4.0	V
DC Reverse Current	I _R	V _R =5V		-	10	μA
Luminous Intensity	I _v	I _F =20mA	2180	3000	-	mcd
Chromaticity Coordinate*	x	I _F =20mA	0.33	0.36	0.39	
	y	I _F =20mA	0.34	0.37	0.40	
50% Power Angle	2θ _{1/2}	I _F =20mA	-	30	-	deg

*Please refer to CIE 1931 chromaticity diagram.

LED & Application Technologies