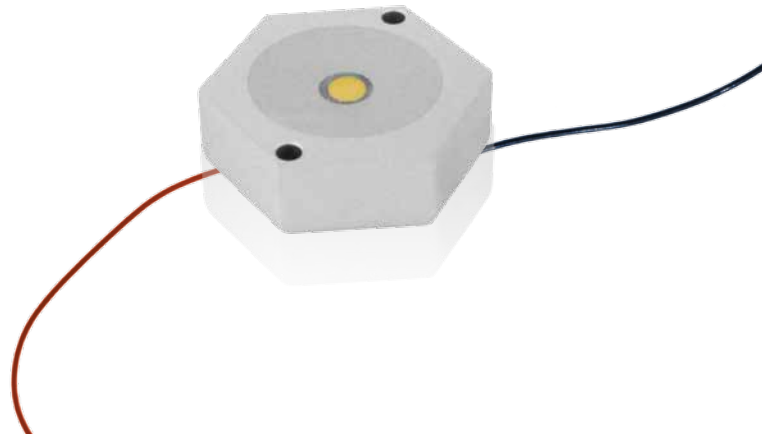


# ALUSTAR 1W/110°

- ↘ Verschiedene Abstrahlwinkel
- ↘ Anschlussfertige Modultechnik
- ↘ Stabiles Wärmemanagement
- ↘ Schutzklasse IP65

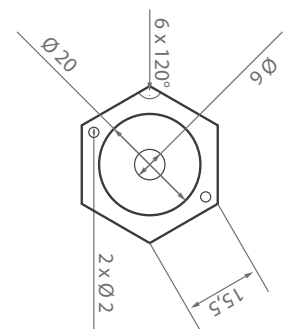
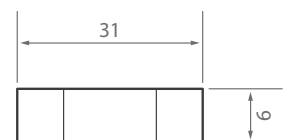
- ↘ Many different beam angles
- ↘ Ready to use modular technology
- ↘ Stable thermal management
- ↘ Ingress protection IP65



Für Montage- und Sicherheitshinweise siehe / For assembly- and safety information see: [www.ledxon.com/downloads](http://www.ledxon.com/downloads)

Dimensions in mm

Betriebsstrom DC	<i>Operating current</i>	350mA
Typ. Leistung	<i>Wattage</i>	1W
Elektrischer Anschluss	<i>Electrical source</i>	only use 350mA current source
LED Typ	<i>LED type</i>	Edison® Edixeon®
Abstrahlwinkel	<i>Beam angle</i>	110°
Schutzart	<i>Ingress protection</i>	IP65
Dimmbarkeit	<i>Dimming</i>	Stromreduzierung/PWM
Sperrspannung	<i>Reverse voltage</i>	5V
Betriebstemperatur	<i>Operating temperature</i>	-20 - +40°C



Artikelbez. <i>Description</i>	Art.-Nr. <i>Part.-No.</i>	Lichtfarbe <i>Light colour</i>	Colour temp. (K)* <i>Wavelength (nm)*</i>	Lumen* <i>Luminance</i>	Spannung* <i>min.</i>	Voltage <i>max.</i>	CRI*
Alustar 1W 110°	9008003	ww	2700K	66lm	2,8V	3,5V	75
Alustar 1W 110°	9008200	nw	4300K	66lm	2,8V	3,5V	75
Alustar 1W 110°	9008001	kw	6000K	100lm	2,8V	3,5V	75
Alustar 1W 110°	9008057	rot	623nm	51,2lm	2V	3V	-
Alustar 1W 110°	9008069	gelb	592nm	60lm	2V	3V	-
Alustar 1W 110°	9008060	grün	525nm	86,5lm	2,8V	3,5V	-
Alustar 1W 110°	9008058	blau	470nm	23,3lm	2,8V	3,5V	-

\*Werte können durch Schwankungen im Herstellungsprozess abweichen. / *Technical variations possible, based on production tolerances.*