

zameL

ZAMEL Sp. z o.o.
43-200 Pszczyna, ul. Zielona 27
tel.: +48 32 210 46 65; fax: +48 32 210 80 04
e-mail: marketing@zamel.pl
www.zamel.com

ONE-CHANNEL RADIO POWER SWITCH RWS-311J/Z

- **remotely controlled switch of household electrical devices such as: lighting, fans, air conditioners, pumps, gates, optical and acoustic signalling devices as well as devices with difficult access**
- **unidirectional radio transmission (f = 868,32 MHz)**
- **coding in accordance with exta free system protocol**
- **cooperation with exta free system transmitters**
- **a possibility of control by means of mobile devices (in cooperation with EFC-02 Mini or EFC-01 controller)**
- **designed to be mounted both indoor and outdoor**
- **designed to operate in difficult weather conditions**
- **independent control of maximum 1 circuit**
- **a possibility of operation with several remote controllers (maximum 113)**
- **designed for continuous operation**
- **supplied by 230 V AC**
- **wide operation range – up to 350 m in the open area**
- **a possibility of increasing the operation range by means of RTN-01 retransmitter.**

Radio power switch RWS-311J/ Z is used for a remote (radio) control of all kinds of electrical devices such as: motors, lighting fittings, driveway gates, pumps, garden lighting, etc. The device operates on a protocol compatible with wireless exta free system and cooperates with the system transmitters.

Radio waves on 868.32 MHz frequency were used for the transmission between a transmitter and a receiver. The receiver has a hermetic casing (IP56) and therefore it can be mounted outdoor and can operate in difficult weather conditions. The RWS-311J/Z switch is supplied directly by 230 V AC. It is equipped with 1 NO contact output relay.

The relay output capacity is 16 A / 250 V AC 4000 VA AC1. By means of RWS-311J/Z it is possible to control independently one electric circuits maximally. Cooperation with wireless exta free system gives a wide range of control possibilities. For example, after the application of EFC-02 Mini or EFC-01 controller, the switch can be controlled by means of mobile devices (tablets, smartphones) and the same it can automate certain control processes.

In case of RWS-311J/Z, the set includes in addition to the switch a 2-channel remote control P-257/2. Other transmitters (maximum number is 113) can be assigned to the receiver.

ZAMEL hereby declares that the device is compatible with the essential requirements and other relevant provisions of Directive 1999/5/EC. Declaration of Conformity can be found on the web page www.zamel.com

Registered design © ZAMEL

Made in EU

Receiver: 230 V AC / 2,8 VA; IP56
Remote control: 3 VDC (1 x CR2032); IP20
Product net weight: 0,415 kg
PN-EN 60950-1
PN-ETSI-EN 300 220-1
PN-ETSI-EN 300 220-2

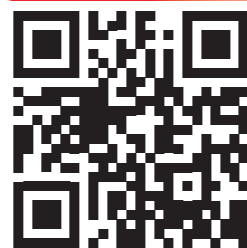


The symbol means selective collecting of electrical and electronic equipment. It is forbidden to put the used equipment together with other waste.

CE 1471

zameL

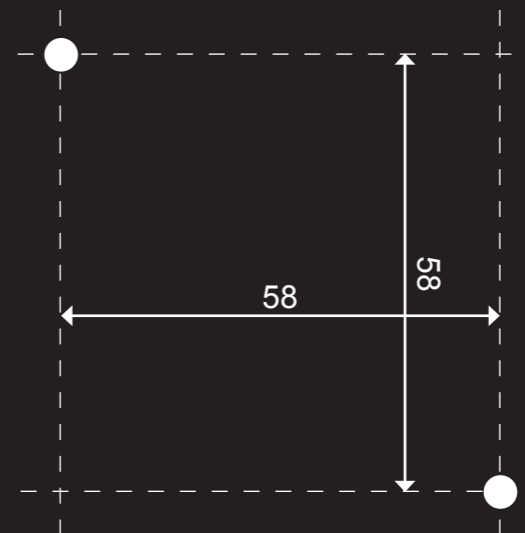
SCAN



the technical data



ONE-CHANNEL
RADIO POWER
SWITCH
RWS-311D/Z

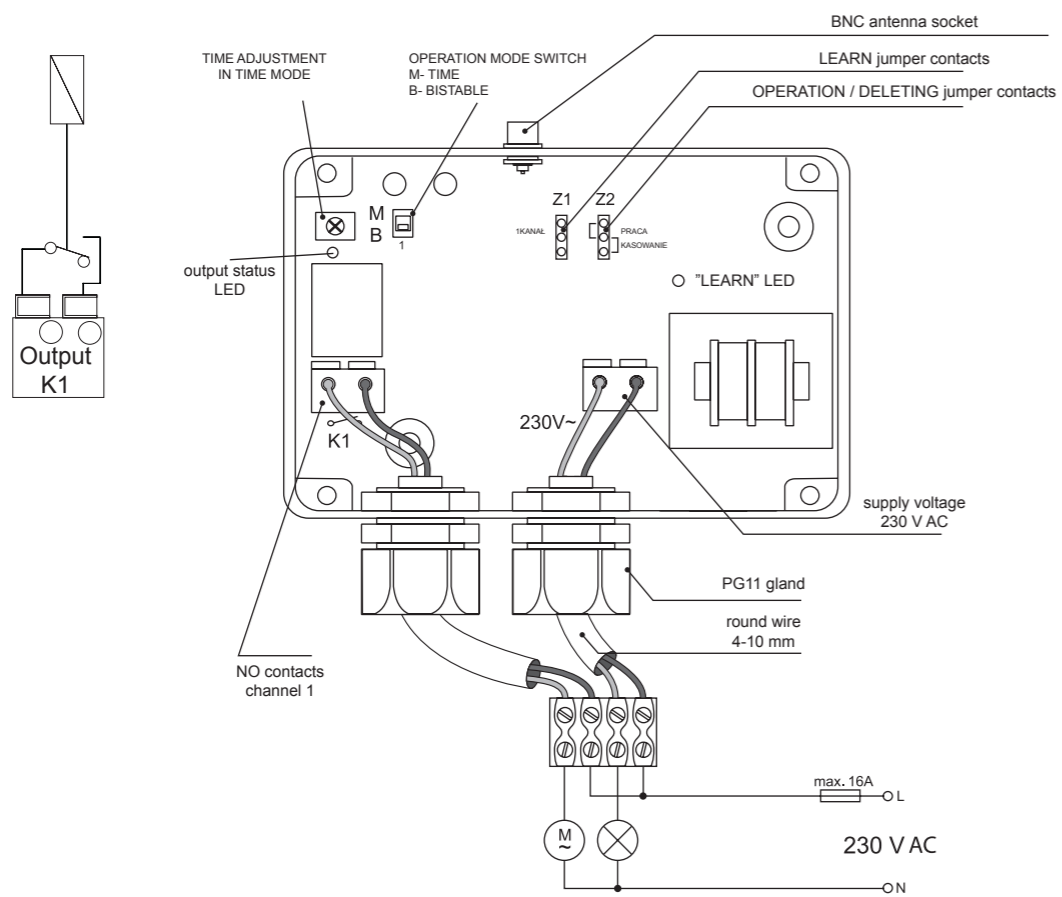


The ZAMEL company devices which are characterised with this sign can cooperate with each other.

WIRELESS CONTROL SYSTEM EXTA FREE

exta free

manual inside



GB

It is recommended that the mounting should be performed by a qualified electrician, who acts in accordance with the service manual and the device functions.

CAUTION:
IT IS IMPORTANT TO REMEMBER THAT K1 RELAY CONTACTS ARE VOLTAGE FREE CONTACTS AND PHASE POTENTIAL MUST BE APPLIED TO ONE OF THE POLES

SE

Det rekommenderas att apparaten monteras av den som har tillräckliga kvalifikationer.

OBSERVERA:
KOMIHÅGATTKOPPLINGSKLÄMMORFÖRRELÄKONTAKTER K1 ÄR SPÄNNINGSFRIA OCH FASSPÄNNINGEN SKA APPLICERAS PÅ EN AV POLERNA

DE

Es wird empfohlen, dass die Montage von einem qualifizierten Personal durchgeführt wird.

ACHTUNG: ES IST ANZUMERKEN, DASS DIE ANSCHLÜSSE K1 POTENTIALFREI SIND. FÜR EINEN DER POLE MUSS POTENTIAL DER PHASE ANGEGEBEN WERDEN.

RUS

Рекомендуется чтобы монтаж был выполнен квалифицированным лицом, имеющим соответствующие допуски.

ВНИМАНИЕ:
НУЖНО ПОМНИТЬ, ЧТО КЛЕММЫ КОНТАКТОВ РЕЛЕ K1 ЯВЛЯЮТСЯ БЕЗПОТЕНЦИАЛЬНЫМИ И НА ОДИН ИЗ ПОЛЮСОВ НЕОБХОДИМО ПОДАТЬ ПОТЕНЦИАЛ ФАЗЫ.

