



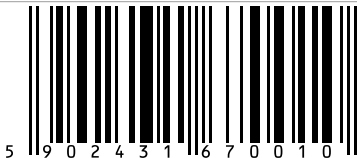
F&F Filipowski sp. j.  
Konstantynowska 79/81, 95-200 Pabianice, Poland  
phone/fax (+48 42) 215 23 83 / (+48 42) 227 09 71  
www.fif.com.pl; e-mail: biuro@fif.com.pl

Wireless system

F&Wave

## FW-RC4-AC

Transmitter for Ø60  
flush-mounted box

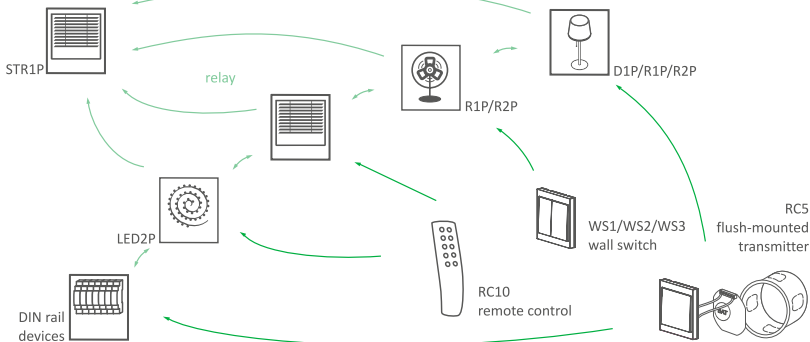


**Do not dispose of this device to trash with other unsorted waste!** In accordance with the Waste Electrical and Electronic Equipment Act any household electro-waste can be turned in free of charge and in any quantity to a collection point established for this purpose, as well as to the store in the event of purchasing new equipment (as per the old for new rule, regardless of brand). Electro-waste thrown in the trash or abandoned in the bosom of nature pose a threat to the environment and human health.



### Description of the system

F&Wave is a family of wireless devices controlled by radio with a range of up to 100 meters\*. The receivers are available in either a DIN-rail mounting version (housing 1S) or a Ø60 flush-mounted version. The transmitters are available as handheld remote controllers or as a flush-mounted version. The receivers relay control signals. The device that receives a control signal from the transmitter will automatically send it forward, which allows to increase the range of the remote control.



\* Range of up to 100 meters in open space without any interfering factors. In building conditions and in the presence of interference sources (power lines, transmitters, etc.) the actual range may be smaller.



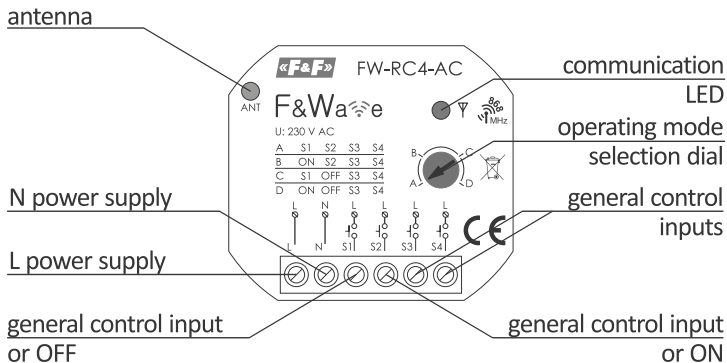
Installation of this device should be carried out by a qualified installer after reading this manual. Dismantling the casing of the device will automatically void the warranty. Before starting the assembly, make sure that the connecting wires are not live. Conditions of storage, transport and use affect the proper operation of the device.

## Features of the module

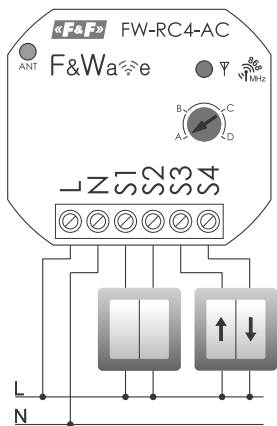
---

- ◆ 4-button remote control transmitter powered from 230 V;
- ◆ cooperation with remote control transmitters of the F&Wave system;
- ◆ ability to control any number of receivers;
- ◆ on/off functionality (bi-stable switch) with receivers: FW-R1P, FW-R1D, FW-R2P, FW-R2D, FW-D1P, FW-D1D, FW-LED2P, FW-LED2D;
- ◆ raise/lower the roller blind with receivers FW-STR1P, FW-STR1D;
- ◆ dim/brighten the lighting with receivers FW-D1P, FW-D1D, FW-LED2P, FW-LED2D;
- ◆ ability to change the configuration of the S1 input to ON - always switch on the paired receivers and/or raise the roller blind;
- ◆ ability to change the configuration of the S2 input to OFF - always switch off the paired receivers and/or raise the roller blind;
- ◆ small enclosure size;
- ◆ screw terminals for easy installation in a Ø60 flush-mounted box;
- ◆ low power consumption - low operating cost.

## Description of the device



## Connection



- L - power supply L
- N - power supply N
- S1 - general control input or OFF
- S2 - general control input or ON
- S3 - general control input
- S4 - general control input



Control input does not work with backlighted buttons.

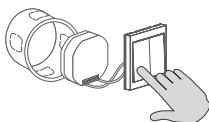
## Pairing

①



After you successfully connect the receiver, press and hold the PROG button until the device switches on the output circuit and the communication LED goes off.

②



Press the selected button connected to the flush-mounted transmitter.

③

If the pairing is correct, the output circuit will be momentary switched off and the LED in the receiver will switch on again.



Exit from the programming mode of the receiver occurs automatically after 30 seconds of waiting for a signal from the transmitter or by briefly pressing the PROG button.

## Unpairing

Unpairing of the flush-mounted transmitter from the receiver is only possible by clearing the list of all transmitters in the receiver. To clear the list of transmitters cooperating with the receiver, press and hold the PROG button for a minimum of 10 seconds. Fast flashing of the communication LED indicates that the memory of the controller is cleared.

## Button configuration



You can change the configuration of the S1 input to ON and the configuration of the S2 input to OFF. To do this, select the adequate mode using the dial located on the housing of the module, according to the attached table.

Mode	Input			
A	S1	S2	S3	S4
B	ON	S2	S3	S4
C	S1	OFF	S3	S4
D	ON	OFF	S3	S4



Due to the nature of transmission and retransmission it is not recommended to use the same button on the transmitter more often than every 2 seconds. Switching the receiver may occur with a slight delay.



It is not recommended to use remote bi-stable transmitters to control a group of receivers due to the risk of the switching status desynchronization (especially when working with larger distances and/or simultaneous use of the local buttons on the receivers).

## F&Wave system devices

Transmitters	Receivers	Ø60 box	DIN rail
<b>flush-mounted</b>	Single relay	FW-R1P	FW-R1D
FW-RC4-AC, FW-RC5	Double relay	FW-R2P	FW-R2D
<b>remote controls</b>	Universal dimmer	FW-D1P	FW-D1D
FW-RC4, FW-RC10	Roller blind controller	FW-STR1P	FW-STR1D
<b>wall buttons</b>	Dual-channel LED controller	FW-LED2P	FW-LED2D
FW-WS1, FW-WS2, FW-WS3			

## Technical data

---

power supply	80÷265 V AC/DC
control inputs	85÷265 V AC; <1 mA
power consumption	
operating mode	0.5 W
standby	0.25 W
radio frequency	868 MHz
working temperature	-25÷65°C
terminal	2.5 mm <sup>2</sup> screw terminals
tightening torque (max)	0.4 Nm
mounting	Ø60 flush-mounted box
dimensions	48×43×20 mm
ingress protection	IP20

## Warranty

---

F&F products are covered by a 24 month warranty from the date of purchase.

The warranty is effective only with a proof of purchase.

Contact your dealer or directly with us.

For more information on the procedure for submitting a warranty claim visit our web-page: [www.fif.com.pl/reklamacje](http://www.fif.com.pl/reklamacje)

## Compliance with the standards

---

PN-EN 60669, PN-EN 60950, PN-EN 55024, PN-EN 61000,

PN-ETSI EN 300 220-1, PN-ETSI EN 300 220-2,

PN-ETSI EN 301 489-1, PN-ETSI EN 301 489-3.

CE declaration of conformity is available for download at: [www.fif.com.pl](http://www.fif.com.pl).