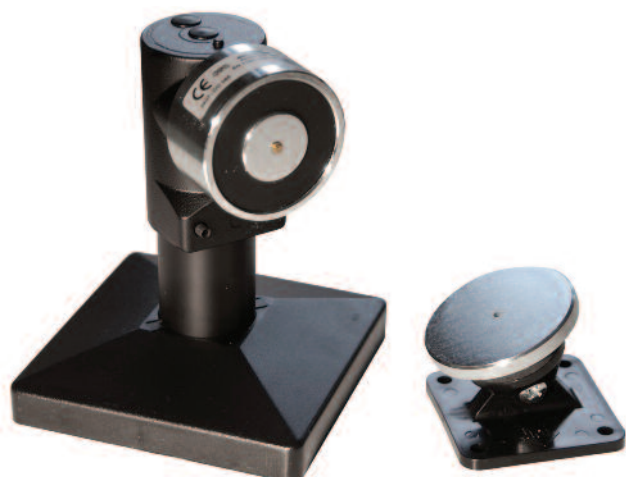


Door Retainers

Series 1370 / 1380



The 1370 and 1380 range of door retainers is an extremely flexible solution to help meet all of your greatest installation challenges.

Floor, wall or ceiling mounted variants ensures that the series is versatile, discreet and simple to install.

Features

- Floor, wall or ceiling mounting
- High holding force
- Release button and protection circuit
- Adjustable mounting height within 30 mm
- Protection diodes as standard

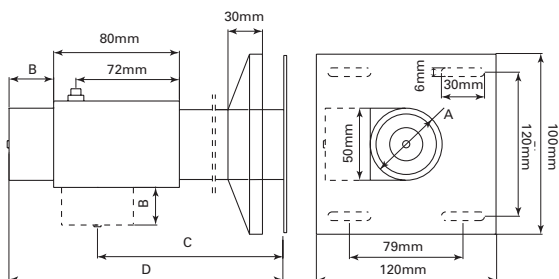
Benefits

- Flexibility in mounting positions
- Suitable for large and small fire doors
- Door can be manually closed when not activated by the fire system
- Versatile installation

Technical Specification

Holding Force	50Kg 490N / 100Kg 980N
Voltage	24Vdc
Current	45mA / 100mA
Mounting	Wall mounting / Floor bracket available
Housing Material	ABS / Aluminium
Temperature Range	10°C to +55°C
Protection	IP40
Weight	1200gr / 1680gr
Body Colour	Black

Dimensions



	Diameter A (mm)	Height B (mm)	Height C (mm)	Height D (mm)
1370-15-D	50	28	127-210	180-210
1370-30-D	50	28	277-307	330-360
1380-15-D	60	32.5	127-157	185-215
1380-30-D	60	32.5	277-307	335-367

Catalogue Numbers

Cat No	Description
1370-15-D	DOOR RELEASE WITH BRACKET 50KG 15CM
1370-30-D	DOOR RELEASE WITH BRACKET 50KG 30CM
1380-15-D	DOOR RELEASE WITH BRACKET 100KG 15CM
1380-30-D	DOOR RELEASE WITH BRACKET 100KG 30CM