

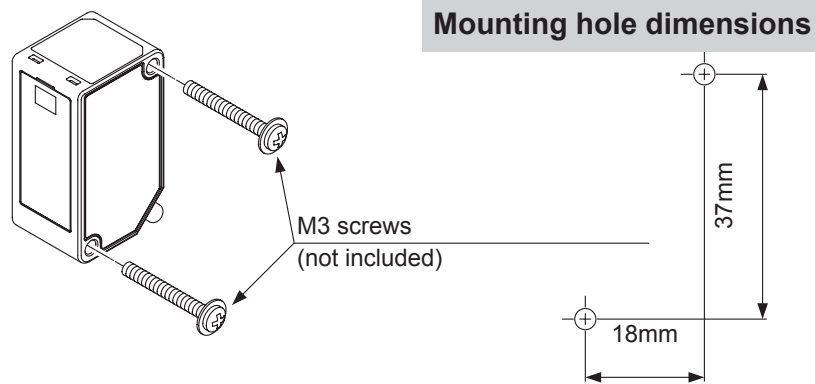
HG-C measurement sensor

Easy user guide

Please follow the procedure from step 1 to 5.

1

Mounting



Adjust the height of the sensor.

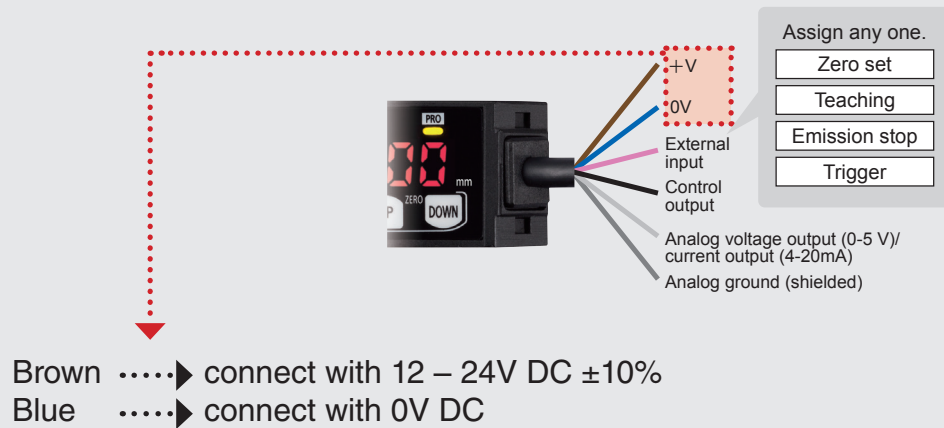


Example: HG-C1050-P
Adjusted height 50mm

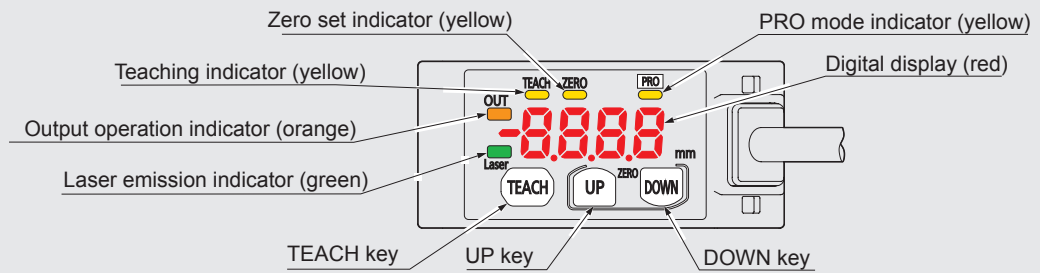
Product No.	Measurement center distance and measuring range	Analog output		Cable length
		Voltage output	Current output	
HG-C1030-P	30±5mm	0 to +5V	4 to 20mA	2m
HG-C1030	30 ±5mm	0 to +5V	4 to 20mA	2m
HG-C1050-P	50 ±15mm	0 to +5V	4 to 20mA	2m
HG-C1050	50 ±15mm	0 to +5V	4 to 20mA	2m
HG-C1100-P	100 ±35mm	0 to +5V	4 to 20mA	2m
HG-C1100	100 ±35mm	0 to +5V	4 to 20mA	2m
HG-C1200-P	200 ±80mm	0 to +5V	4 to 20mA	2m
HG-C1200	200 ±80mm	0 to +5V	4 to 20mA	2m
HG-C1400-P	400 ±200mm	0 to +5V	4 to 20mA	2m
HG-C1400	400 ±200mm	0 to +5V	4 to 20mA	2m

2

Wiring



Part description



3

Remote zero-adjustment

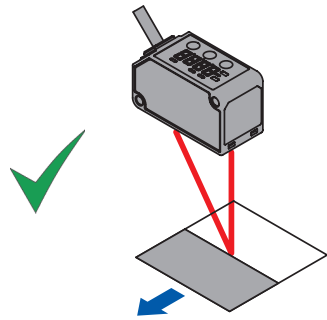
Press and hold the keys UP and DOWN simultaneously for 3 seconds



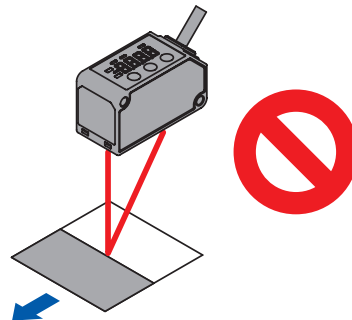
4

Measuring (analog)

Correct



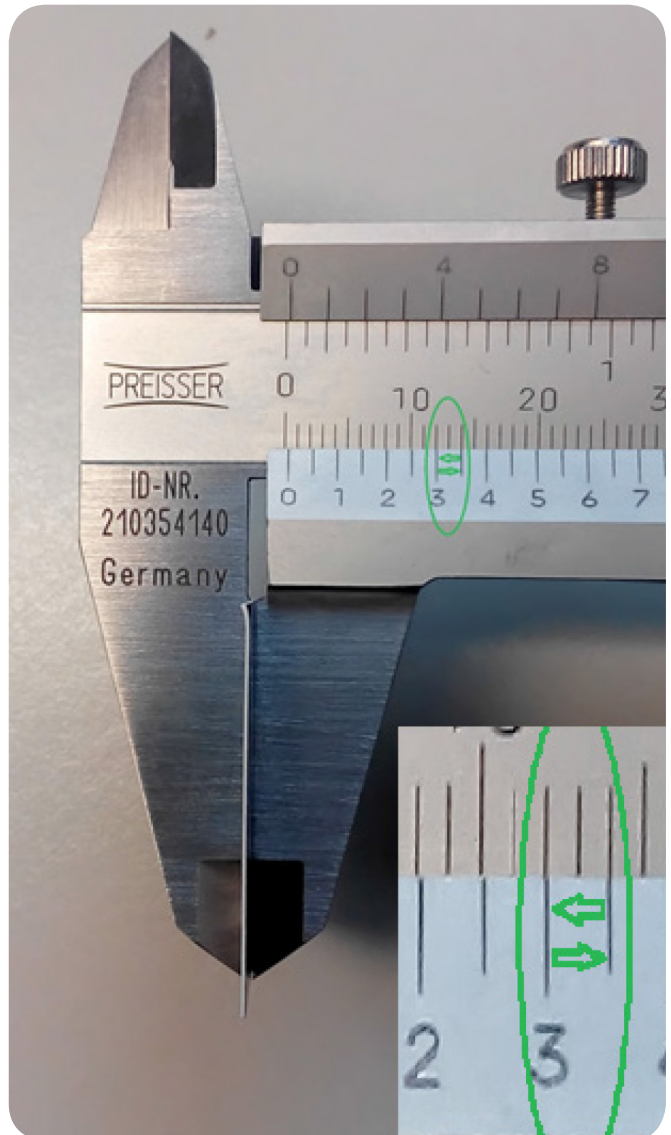
Incorrect



Zero point setting



Measuring



5

Limit teaching (digital)

- a) Position sensor without objects
- b) Press TEACH key once



- c) Position object underneath the sensor
- d) Press TEACH key once



If the limit teaching is successful, the word "good" will appear on the display.



Do you need assistance?

Please contact our hotline: +49 (0) 89-45354-2737.

Alternatively, send an e-mail to sensors.peweu@eu.panasonic.com

or contact one of our sales people.

Panasonic[®]

Panasonic Electric Works Europe AG

Robert-Koch-Straße 100 • 85521 Ottobrunn

Tel: +49 (0) 89 45354-1000 • Fax: +49 (0) 89 45354-2111

e-mail: info.peweu@eu.panasonic.com

www.panasonic-electric-works.com